



EXTERNAL ACCESS SYSTEM

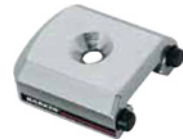
HARKEN®



1643.CLEAR



HC9606.CLEAR



HC9561.CLEAR

Car Assembly

Code	Description	Length		Width		Maximum working load		Fits track
		in	mm	in	mm	lb	kg	mm
MM HRK HC9606.CLEAR*	27 mm Midrange 2-car External Access car assembly with coupler	10 ³ / ₄	273	2 ³ / ₄	70	220	100	1643/1644

External access cars must only be used with high-load track and endstops listed below. 5/16" (8 mm) track fasteners required.

*To order black Hardkote-anodized, remove ".CLEAR" from end of part number

Track

Code	Description	Length		Mounting hole spacing		Fasteners		Endstop	Splice link
		ft/in	m	in	mm	in	mm		
MM HRK 1643.3m.CLEAR*	27 mm Midrange high-load pinstop track	9'10 ¹ / ₁₆ "	3	3 ¹⁵ / ₁₆	100	5/16 FH	8 FH	HC9561.CLEAR*	1619
MM HRK 1643.3.6m.CLEAR*	27 mm Midrange high-load pinstop track	11'9 ³ / ₄ "	3.6	3 ¹⁵ / ₁₆	100	5/16 FH	8 FH	HC9561.CLEAR*	1619
MM HRK 1643.6m.CLEAR*	27 mm Midrange high-load pinstop track	19'8 ¹ / ₄ "	6	3 ¹⁵ / ₁₆	100	5/16 FH	8 FH	HC9561.CLEAR*	1619
MM HRK HC9561.CLEAR*	27 mm Midrange track endstops (sold in pairs)	2 ¹ / ₄ "	57 mm	---	---	5/16 FH	8 FH	---	---
MM HRK 1619	Splice link	Purchase one splice link for each track section.							

1644 Track for 6 mm fasteners with 50 mm hole spacing available by special order. Contact Harken for lead time.

*To order black Hardkote-anodized, remove ".CLEAR" from end of part number

MIDRANGE

HARKEN®



1540 1542 1586 1541 1544 1545 1546 1548 1559 1560 1564

Code	Description	Sheave Ø		Length		Weight		Max line Ø		Shackle pin Ø		Maximum working load		Breaking load		Use with
		in	mm	in	mm	oz	g	in	mm	in	mm	lb	kg	lb	kg	
MM HRK 1540	Single	3	76	6 1/8	156	13	367	9/16	14	5/16	8	1800	816	5000	2268	
MM HRK 1542	Single/aluminum sheave	3	76	6 1/8	156	15	425	9/16	14	5/16	8	1800	816	5000	2268	
MM HRK 1586	Single/high-load	3	76	6 1/8	156	13	367	9/16	14	5/16	8	2300	1043	5000	2268	
MM HRK 1541	Single/becket	3	76	7 1/8	184	14	397	9/16	14	5/16	8	1800	816	5000	2268	
MM HRK 1544	Double	3	76	7 1/2	191	25 1/2	723	9/16	14	5/16	8	2800	1270	7000	3175	
MM HRK 1545	Double/becket	3	76	8 1/2	216	26 1/2	751	9/16	14	5/16	8	2800	1270	7000	3175	
MM HRK 1546	Triple	3	76	7 3/4	197	36	1020	9/16	14	5/16	8	3800	1724	8500	3856	
MM HRK 1548	Cheek*	3	76	4 3/8	111	11	312	9/16	14	---	---	1500	680	4200	1905	
MM HRK 1559	Fiddle	3/2	76/51	8 1/2	216	17	482	9/16	14	5/16	8	1800	816	5000	2268	1541 for 3:1
MM HRK 1560	Fiddle/becket	3/2	76/51	9 1/2	241	18	510	9/16	14	5/16	8	1800	816	5000	2268	1559 for 4:1
MM HRK 1564	Fiddle/280 Cam-Matic®/becket	3/2	76/51	9 1/2	241	24 1/2	695	9/16	14	5/16	8	1800	816	5000	2268	1559 for 4:1

*1/4" (6 mm) RH fasteners

EASY ORDERS

CUSTOMER CONTACT CENTRE

www.mansuetomarine.it
+39 0184 573346



MANSUETO MARINE



BIG BOAT BLOCKS

HARKEN®

BLACK MAGIC AIRBLOCKS 57 MM



1951 1950 1952 1961 1954 1965 3195

Code	Description	Sheave Ø mm	Length		Weight w/shackle		Shackle pin Ø		Max Line Ø		Maximum working load		Breaking load	
			in	mm	oz	g	in	mm	in	mm	lb	kg	lb	kg
MM HRK 1950	Single/swivel/low-load	57	4 11/16	119	5.0	142	1/4	6	7/16	12	1655	750	3310	1500
MM HRK 1951	Single/swivel/low-load/becket	57	5 1/2	140	5.5	155	1/4	6	7/16	12	1655	750	3310	1500
MM HRK 1952	Double/swivel/low-load	57	5 3/16	132	10.1	286	5/16	8	7/16	12	2755	1250	5510	2500
MM HRK 1954	Triple/swivel	57	5 3/16	132	13.2	375	5/16	8	7/16	12	4850	2200	9700	4400
MM HRK 1958	Single/swivel/high-load	57	4 11/16	119	5.0	142	1/4	6	7/16	12	2500	1134	5000	2268
MM HRK 1959	Single/swivel/high-load/becket	57	5 1/2	140	5.5	155	1/4	6	7/16	12	2500	1134	5000	2268
MM HRK 1960	Double/swivel/high-load	57	5 3/16	132	10.1	286	5/16	8	7/16	12	3600	1633	7200	3267
MM HRK 1961	Double/swivel/high-load/becket	57	6	152	10.6	302	5/16	8	7/16	12	3600	1633	7200	3267
MM HRK 1965	Stand-up/high-load*	57	4 1/2	114	7.4	210	1/4	6	7/16	12	2500	1134	5000	2268
MM HRK 3195	Single loop block**	57	3	76	3.25	92	---	---	7/16	12	2500	1134	5000	2268

*Includes padeye

1/4" (6 mm) fastener circle: 1 15/32" (37 mm)

**Loop not included

HARKEN®

BLACK MAGIC AIRBLOCKS 75 MM



1969 3090 1970 1971 3095 3196 1974 3088 1975 1962

Code	Description	Sheave Ø mm	Length		Weight w/shackle		Shackle pin Ø		Max Line Ø		Maximum working load		Breaking load	
			in	mm	oz	g	in	mm	in	mm	lb	kg	lb	kg
MM HRK 1962	Spriddle/becket	75/57	8 7/8	225	16.8	476	5/16	8	9/16	14	5000	2268	10000	4536
MM HRK 1969	Single/swivel	75	5 1/8	129	11.5	325	5/16	8	9/16	14	5000	2268	10000	4536
MM HRK 1970	Single/swivel/becket	75	6 3/16	157	12.4	351	5/16	8	9/16	14	5000	2268	10000	4536
MM HRK 1971	Double/swivel	75	5 1/4	134	25.7	728	3/8	10	9/16	14	7500	3402	15000	6804
MM HRK 1974	Stand-up*	75	5 15/16	151	15.5	440	---	---	9/16	14	5000	2268	10000	4536
MM HRK 1975	Spriddle	75/57	7 13/16	199	15.9	452	5/16	8	9/16	14	5000	2268	10000	4536
MM HRK 3088	Straphead spriddle	75/57	7 1/32	180	12.8	362	---	---	9/16	14	5000	2268	10000	4536
MM HRK 3090	Single/swivel/low-load	75	5 1/8	129	11.5	325	5/16	8	9/16	14	3000	1361	6000	2722
MM HRK 3095	Double/straphead	75	4 11/16	119	19.2	545	---	---	9/16	14	7500	3402	15000	6804
MM HRK 3196	Single Loop block**	75	3 15/16	100	7.27**	206	---	---	9/16	14	5000	2268	10000	4536

*Includes padeye. Uses hole spacing and base dimensions of 627 padeye. Maximum working load decreases at varying angles.

**Loop not included

www.mansuetomarine.it

HARKEN®

BLACK MAGIC AIRBLOCKS 100 MM



Code	Description	Sheave Ø mm	Length		Weight w/shackle		Shackle pin Ø		Max Line Ø		Maximum working load		Breaking load	
			in	mm	oz	g	in	mm	in	mm	lb	kg	lb	kg
MM HRK 1993	Spriddle	100/75	11 ¹¹ / ₁₆	297	26.5	752	3/8	10	5/8	16	7500	3402	15000	6804
MM HRK 3007	Single/swivel	100	8	203	20.1	570	3/8	10	5/8	16	7500	3402	15000	6804
MM HRK 3008	Single/swivel/becket	100	9 ¹ / ₂	241	22.6	641	3/8	10	5/8	16	7500	3402	15000	6804
MM HRK 3009	Double/swivel	100	8 ¹⁵ / ₁₆	227	48.3	1370	1/2	12	5/8	16	11000	4990	22000	9979
MM HRK 3012	Stand-up*	100	7 ¹¹ / ₁₆	195	30.3	859	---	---	5/8	16	7500	3402	15000	6804
MM HRK 3089	Straphead spriddle	100/75	9 ¹ / ₄	235	24	680	---	---	5/8	16	7500	3402	15000	6804
MM HRK 3199	Single Loop block**	100	5 ¹ / ₁₆	128	13.06	370	---	---	5/8	16	7500	3402	15000	6804
MM HRK C8213	Center becket for 100 mm	100	1.83	46.5	2.4	67	---	---	---	---	2500	1134	---	---

*Includes padeye. Uses hole spacing and base dimensions of 648 padeye.

**Loop not included

HARKEN®

BLACK MAGIC AIRBLOCKS 125-150 MM



Code	Description	Sheave Ø mm	Length		Weight w/shackle		Shackle pin Ø		Max Line Ø		Maximum working load		Breaking load	
			in	mm	oz	g	in	mm	in	mm	lb	kg	lb	kg
125 mm														
MM HRK 3016	Single/swivel	125	10	254	36.8	1042	1/2	12	3/4	19	11000	4990	22000	9977
MM HRK 3018	Stand-up*	125	9 ¹ / ₁₆	230	43.9	1246	---	---	3/4	19	11000	4990	22000	9977
MM HRK 3201	Single Loop block***	125	6	163	23.20***	658***	---	---	3/4	19	11000	4990	22000	9977
MM HRK C7971	Center becket for 125 mm	---	2 ³ / ₈	60	4.9	140	---	---	---	---	3667	1663	---	---
150 mm														
MM HRK 3021	Single/swivel	150	12	305	61	1730	5/8	16	1	25	15000	6802	30000	13605
MM HRK 3022	Stand-up**	150	11 ¹ / ₈	283	66	1878	---	---	1	25	15000	6802	30000	13605
MM HRK C7592	Center becket for 150 mm	---	2 ³ / ₄	71	9.4	270	---	---	---	---	5000	2268	---	---

*Includes padeye. Uses hole spacing and base dimensions of 648 padeye. Maximum working load decreases at varying angles.

**Uses hole spacing and base dimensions of 629 padeye. Maximum working load decreases at varying angles.

***Loop not included



HARKEN®

BLACK MAGIC TEARDROP



Code	Description	Sheave Ø		Clevis pin Ø		Length		Weight		Max Line Ø		Maximum working load		Breaking load		Use padeye
		in	mm	in	mm	in	mm	oz	g	in	mm	lb	kg	lb	kg	
57 mm																
MM HRK 3042	Mastcollar/low-load	2 ¹ / ₄	57	---	6	3 ³ / ₈	86	3.6	102	3/8	10	1655	750	3310	1500	---
MM HRK 3044	Padeye/high-load	2 ¹ / ₄	57	5/16	8	3 ³ / ₈	86	3.9	110	3/8	10	2500	1134	5000	2268	627
75 mm																
MM HRK 3046	Mastcollar/low-load	3	75	5/16	8	4 ⁷ / ₁₆	113	8.5	240	9/16	14	3000	1361	6000	2721	---
MM HRK 3047	Padeye	3	75	3/8	10	4 ⁷ / ₁₆	113	9	250	9/16	14	5000	2268	10000	4535	648/689
100 mm																
MM HRK 3050	Padeye	4	100	1/2	12.7	5 ¹³ / ₁₆	148	15.3	436	5/8	16	7500	3402	15000	6804	---



HARKEN®

CRUISING ESP



Code	Description	Sheave Ø		Length		Weight		Shackle pin Ø		Max Line Ø		Maximum working load		Breaking load	
		in	mm	in	mm	oz	g	in	mm	in	mm	lb	kg	lb	kg
57 mm															
MM HRK 6059	Single/swivel	2 1/4	57	5 1/2	140	7.7	218	3/16	8	5/8	16	2205	1000	4409	2000
MM HRK 6094	Single/swivel/becket	2 1/4	57	6 11/16	170	9	255	3/16	8	5/8	16	2205	1000	4409	2000
MM HRK 6105	Forkhead	2 1/4	57	4 1/2	114	4.5	129	1/4	6	3/8	10	1650	748	3300	1496
75 mm															
MM HRK 6058	Single/swivel	3	75	6 1/4	159	12	340	3/16	8	3/4	19	3500	1587	7000	3175
MM HRK 6084	Single/swivel/becket	3	75	7 1/4	184	13	369	3/16	8	3/4	19	3500	1587	7000	3175
MM HRK 6085	Fiddle	3 1/13 1/16	75/46	8 3/8	213	14.7	415	3/16	8	3/4	19	3500	1587	7000	3175
MM HRK 6086	Fiddle/becket	3 1/13 1/16	75/46	9 1/2	241	15.6	444	3/16	8	3/4	19	3500	1587	7000	3175
MM HRK 6099	Fiddle/becket/280 Cam-Matic®	3 1/13 1/16	75/46	9 1/2	241	25.2	715	3/16	8	3/4	19	2000	907	4000	1814
100 mm															
MM HRK 6100	Single/swivel	4	100	8 1/8	206	28.5	808	3/8	10	3/4	19	4870	2209	9740	4418



Download our App and access the marine catalogues from your mobile device!



HARKEN®

CRUISING ESP



Code	Description	Sheave Ø		Length		Weight		Clevis pin Ø		Max Line Ø		Maximum working load		Breaking load		Max lockoff load		Fasteners (FH)	
		in	mm	in	mm	oz	g	in	mm	in	mm	lb	kg	lb	kg	lb	kg	in	mm
40 mm																			
MM HRK 6106	Teardrop Footblock‡	1 9/16	40	2 9/32	65.5	1.8	50	—	—	1/2	12	1250	567	2500	907	—	—	5/16, 3/32	8,4
57 mm																			
MM HRK 6050	Teardrop Mastcollar	2 1/4	57	3 11/16	93.5	4.3	122	5/16	8	5/8	16	2100	850	4190	1900	—	—	—	—
MM HRK 6065	Teardrop Padeye block	2 1/4	57	3 11/16	93.5	4.5	128	5/16	8	5/8	16	2100	850	4190	1900	—	—	—	—
MM HRK 6077	Footblock/lockoff**‡	2 1/4	57	3 7/8	99	8	226	—	—	5/8	16	2205	1000	4409	2000	1200	550	5/16	8
MM HRK 6091	Footblock‡	2 1/4	57	3 7/8	99	5.4	153	—	—	5/8	16	2205	1000	4409	2000	—	—	5/16	8
MM HRK 6095	Teardrop Mastcollar/low-load	2 1/4	57	4 3/8	117	4	113	—	6	5/8	16	1650	750	3300	1500	—	—	—	—
MM HRK 6096	Narrow Teardrop Mastcollar	2 1/4	57	3 1/2	89	3.3	94	—	6	3/8	10	1650	748	3300	1497	—	—	—	—
MM HRK 6097	Narrow Teardrop Mastcollar	2 1/4	57	3 1/2	89	3.5	99	5/16	8	3/8	10	1650	748	3300	1497	—	—	—	—
75 mm																			
MM HRK 6056	Teardrop Mastcollar	3	75	4 3/8	117	7.8	221	5/16	8	3/4	19	3000	1361	6000	2721	—	—	—	—
MM HRK 6057	Teardrop Padeye Block	3	75	4 11/16	119	8.4	238	3/8	10	3/4	19	3500	1587	7000	3175	—	—	—	—
MM HRK 6078	Foot/lockoff**‡	3	75	4 3/8	112	12	340	—	—	3/4	19	3500	1587	7000	3175	1200	550	5/16	8
MM HRK 6092	Footblock‡	3	75	4 3/8	112	10.3	293	—	—	3/4	19	3500	1587	7000	3175	—	—	5/16	8
MM HRK 6098	Narrow Teardrop Mastcollar	3	75	4 7/16	113	6.4	181	5/16	8	1/2	12	2500	1134	5000	2268	—	—	—	—
100 mm																			
MM HRK 6093	Footblock‡	4	100	5 11/16	144	22.6	642	—	—	3/4	19	7500	3402	15000	6804	—	—	1/2	12

**Lockoffs are intended to hold lines temporarily and should not be used in place of line stoppers or clutches
‡If double stacked, upper block is two-thirds of listed MWL and breaking load

We deliver ALL OVER EUROPE
MORE THAN 1.000.000 articles on stock
WITH OUR OWN MEANS OF TRANSPORT

24/7 Express DELIVERY to the Mediterranean

HARKEN®

STAINLESS STEEL CRUISING ESP



Code	Description	Sheave Ø		Length		Weight		Clevis/ Shackles pin Ø		Max Line Ø		Maximum working load		Breaking load ‡		Max lockoff load		Fasteners (FH)	
		in	mm	in	mm	oz	g	in	mm	in	mm	lb	kg	lb	kg	lb	kg	in	mm
57 mm																			
MM HRK 6068	Single/swivel	2 1/4	57	5 1/2	140	11	312	5/16	8	5/8	16	2205	1000	4409	2000	—	—	—	—
MM HRK 6069	Mastcollar	2 1/4	57	3 11/16	93.5	7	198	5/16	8	5/8	16	2205	1000	4409	2000	—	—	—	—
MM HRK 6070	Single foot/lockoff*‡	2 1/4	57	3 3/4	132	9	255	—	—	5/8	16	2205	1000	4409	2000	650	295	3/8	10
MM HRK 6076	Footblock‡	2 1/4	57	3 3/4	95	7	198	—	—	5/8	16	2205	1000	4409	2000	—	—	3/8	10
MM HRK 6089	Single/swivel/becket	2 1/4	57	6 11/16	170	12.5	354	5/16	8	5/8	16	2205	1000	4409	2000	—	—	—	—
75 mm																			
MM HRK 6072	Single/swivel	3	75	6 1/4	159	19	539	5/16	8	3/4	19	3500	1587	7000	3175	—	—	—	—
MM HRK 6073	Mastcollar	3	75	4 3/8	117	16	454	5/16	8	3/4	19	3000	1361	6000	2721	—	—	—	—
MM HRK 6074	Single foot/lockoff*‡	3	75	4 3/8	111	17	482	—	—	3/4	19	3500	1587	7000	3175	750	340	3/8	10
MM HRK 6079	Footblock‡	3	75	4 1/2	114	16	454	—	—	3/4	19	3500	1587	7000	3175	—	—	3/8	10
MM HRK 6080	Fiddle	3 11/16	75/46	8 3/8	213	24	680	5/16	8	3/4	19	3500	1587	7000	3175	—	—	—	—
MM HRK 6081	Fiddle/becket	3 11/16	75/46	9 1/2	241	26.25	744	5/16	8	3/4	19	3500	1587	7000	3175	—	—	—	—
MM HRK 6087	Single/swivel/becket	3	75	7 1/4	184	21.25	602	5/16	8	3/4	19	3500	1587	7000	3175	—	—	—	—
Deck Organizers																			
MM HRK 6075	Deck organizer/3-sheave‡	1 1/2	40	7 11/16	179	10	284	—	—	1/2	12	3000	1361	6000	2721	—	—	5/16	8
MM HRK 6071	Deck organizer/3-sheave‡	2 1/4	57	9 15/16	252	21	595	—	—	5/8	16	6000	2721	12000	5442	—	—	3/8	10

*Lockoffs are intended to hold lines temporarily and should not be used in place of line stoppers or clutches
‡If double stacked, upper block/organizer is two-thirds of listed MWL and breaking load

FIND US ON facebook!
www.facebook.com/mansuetomarine



HARKEN®

STAINLESS STEEL BLOCKS



Code	Description	Sheave Ø		Max Line Ø		Maximum working load		Breaking load	
		in	mm	in	mm	lb	kg	lb	kg
75 mm									
MM HRK HC9985	Swivel block	3	75	9/16	14	5000	2268	10000	4536
MM HRK HC9986	Stand-up block	3	75	9/16	14	5000	2268	10000	4536
MM HRK HC9987	Swivel block/becket	3	75	9/16	14	5000	2268	10000	4536
MM HRK HC9990	Teardrop	3	75	9/16	14	5000	2268	10000	4536
MM HRK HC10041	Single footblock	3	75	9/16	14	5250	2382	10500	4763
100 mm									
MM HRK HC9076	Stand-up block	3.94	100	5/8	16	11025	5000	22050	10000
MM HRK HC9077	Swivel block	3.94	100	5/8	16	11025	5000	22050	10000
MM HRK HC9078	Teardrop	3.94	100	5/8	16	11025	5000	22050	10000
MM HRK HC9080	Single footblock	3.94	100	5/8	16	11025	5000	22050	10000
MM HRK HC9079	Double footblock	3.94	100	5/8	16	7350	3333	14699	6666
125 mm									
MM HRK HC9081	Stand-up block	4.92	125	3/4	19	15435	7000	30870	14000
MM HRK HC9082	Swivel block	4.92	125	3/4	19	15435	7000	30870	14000
MM HRK HC9083	Teardrop	4.92	125	3/4	19	15435	7000	30870	14000
MM HRK HC9085	Single footblock	4.92	125	3/4	19	15435	7000	30870	14000
MM HRK HC9084	Double footblock	4.92	125	3/4	19	10187	4620	20374	9240
150 mm									
MM HRK HC9086	Stand-up block	5.91	150	1	25	22050	10000	44100	20000
MM HRK HC9087	Swivel block	5.91	150	1	25	22050	10000	44100	20000
MM HRK HC9088	Teardrop	5.91	150	1	25	22050	10000	44100	20000
MM HRK HC9090	Single footblock	5.91	150	1	25	22050	10000	44100	20000
MM HRK HC9089	Double footblock	5.91	150	1	25	14699	6666	29398	13332
MM HRK HC10102	Stand-up block/U-bolt	5.91	150	1	25	22050	10000	44100	20000
175 mm									
MM HRK HC9091	Stand-up block	6.89	175	1	25	33075	15000	66150	30000
MM HRK HC9092	Swivel block	6.89	175	1	25	33075	15000	66150	30000
MM HRK HC9093	Teardrop	6.89	175	1	25	33075	15000	66150	30000
MM HRK HC9095	Single footblock	6.89	175	1	25	33075	15000	66150	30000
MM HRK HC9094	Double footblock	6.89	175	1	25	22050	10000	44100	20000

HARKEN®

BALL BEARING CAM CLEATS



Code	Description	Height		Length		Width		Weight		Line Ø min - max		Fastener spacing		Maximum working load		Breaking load		Pawls	
		in	mm	in	mm	in	mm	oz	g	in	mm	in	mm	lb	kg	lb	kg		
MM HRK 150	Cam-Matic®*	1 1/16	30	2 1/16	65	1 1/4	32	2.50	71	1/8 - 1/2	3 - 12	1 1/2	38	300	136	750	340	Aluminum	
MM HRK 280	Offshore Cam-Matic®***	1 1/4	32	3 3/8	85	1 1/2	38	5.25	148	1/4 - 5/8	6 - 16	2 1/16	52	500	227	1000	454	Aluminum	
MM HRK 468	Micro Cam-Matic®**	7/8	22	1 7/8	48	1 5/16	24	0.93	26	3/32 - 1/4	2 - 6	1 1/16	27	200	91	400	181	Aluminum	
MM HRK 365	Carbo-Cam®*	1 3/32	28	2 9/16	65	1 1/4	32	1.44	42	1/8 - 3/8	3 - 10	1 1/2	38	200	91	500	227	Plastic carbon-matrix	
MM HRK 412	Double Cam-Matic®****	2 1/16	53	3 7/32	81	1 1/4	32	4.50	126	5/16 - 3/8	8 - 10	2 1/16	62	500	227	750	340	Aluminum	
MM HRK 471	Micro Carbo-Cam®**	7/8	22	1 7/8	48	1 5/16	24	0.67	19	1/8 - 1/4	3 - 6	1 1/16	27	150	68	300	136	Plastic carbon-matrix	
Trigger Cleat																			
MM HRK 418	Trigger cleat****	1 3/8	35	2 1/2	64	3	76	5.6	159	3/16 - 1/2	5 - 12	2	51	500	227	1000	454	Stainless steel	
MM HRK 355	Trigger cleat adaptor plate	1/4	6	3 9/64	79	1 9/32	31	1.3	36	—	—	2 7/8	66	—	—	—	—	—	

*#10 (5 mm) FH fasteners

**#8 (4 mm) RH fasteners

***1/4" (6 mm) FH fasteners

****#10 (5 mm) TH fasteners

HARKEN®

CAM KITS



Micro Kits						
Code	Description	Cam	Wedge	Fairlead	Weight	
					oz	g
MM HRK 472	Carbo-Cam®/wedge/wire fairlead	471	297	475	1.2	33
MM HRK 469	Cam-Matic®/wire fairlead	468	—	475	1.2	33
MM HRK 473	Carbo-Cam®/wire fairlead	471	—	475	0.9	26
MM HRK 474	Carbo-Cam®/X-Treme Angle Fairlead	471	—	476	1.7	47
MM HRK 470	Cam-Matic®/X-Treme Angle Fairlead	468	—	476	1.9	55

Standard Kits						
Code	Description	Cam	Wedge	Fairlead	Weight	
					oz	g
MM HRK 326	Carbo-Cam®/wire fairlead	365	—	298	2.00	54
MM HRK 327	Cam-Matic®/wire fairlead	150	—	298	3.00	85
MM HRK 458	Carbo-Cam®/X-Treme Angle Fairlead	365	—	380	3.36	98
MM HRK 459	Cam-Matic®/X-Treme Angle Fairlead	150	—	375	4.42	127



HARKEN®

CAM CLEAT ACCESSORIES



Code	Description	Height above cam		Height		Length		Width		Weight		Fastener spacing		Fits	
		in	mm	in	mm	in	mm	in	mm	oz	g	in	mm		
Micro															
MM HRK 281	Eyestrapp	1/2	12	—	—	1 7/16	36	7/16	11	.16	4.5	1 1/16	27	468/471	
MM HRK 475	Wire fairlead	—	—	1 5/16	23	1 7/8	48	1 5/16	24	.29	8	1 1/16	27	468/471	
MM HRK 293	Flat cam riser	—	—	5/8	16	1 7/8	48	1 5/16	24	.50	14	1 1/16	27	468/471	
MM HRK 294	15° Angled micro cam riser	—	—	3/4	19	1 7/8	48	1 5/16	24	.75	21	1 1/16	27	468/471	
MM HRK 297	Cam wedge kit	—	—	—	—	1 7/8	48	1 5/16	24	.16	5	1 1/16	27	468/471	
MM HRK 476	X-Treme Angle Fairlead	7/8	22	1 7/16	37	1 5/16	33	2	51	1	29	1 1/16	27	468/471	
MM HRK 424	Flairlead‡‡	7/16	11	—	—	1 5/8	41	5/8	16	.13	3.5	1 1/16	27	468/471	
Standard															
MM HRK 137	Eyestrapp	3/4	19	—	—	2	51	9/16	14	.32	9	1 1/2	38	150/365	
MM HRK 145	Cam wedge kit	—	—	—	—	2 9/16	65	1 1/4	32	1.00	28	1 1/2	38	150/365	
MM HRK 201	Low-profile eyestrapp	3/8	10	—	—	1 7/8	48	7/16	11	.16	4.5	1 1/2	38	150/365	
MM HRK 295	Flat cam riser	—	—	1	28	2 9/16	65	1 1/4	32	1.50	38	1 1/2	38	150/365	
MM HRK 296	15° Angled cam riser	—	—	1	25	2 9/16	65	1 1/4	32	1.25	35	1 1/2	38	150/365	
MM HRK 298	Wire fairlead	—	—	1 1/4	32	2 9/16	65	1 1/4	32	.50	14	1 1/2	38	150/365	
MM HRK 375	X-Treme Angle Fairlead‡	1 5/16	24	2 1/4	57	1 13/16	46	2 9/16	65	1.92	56	1 1/2	38	150	
MM HRK 380	X-Treme Angle Fairlead‡	1 5/16	24	2 3/16	54	1 13/16	46	2 9/16	65	1.92	56	1 1/2	38	365	
MM HRK 425	Flairlead‡‡	5/8	16	—	—	2 1/16	56	1 13/16	21	.25	7	1 1/2	38	150/365	
MM HRK 431	Colored cam caps‡‡‡	blue/yellow/green/black/red												150/468/365/471	
MM HRK 438	Cam adapter plate	—	—	9/16	14	3	76	1 7/16	36	2.50	71	1 1/2	38	150/365	
Offshore															
MM HRK 282	Large eyestrapp	1 5/16	23	—	—	2 13/16	71	3/4	19	.80	23	2 1/16	52	280	
MM HRK 283	Offshore cam wedge kit	—	—	—	—	3 3/8	85	1 1/2	38	1.50	43	2 1/16	52	280	

‡Max line Ø: 3/8" (10 mm)

‡‡ Indicate color: BL (blue), Y (yellow), G (green), B (black), R (red)

www.mansuetomarine.it

