

## PUMPS



### SINGLE AND TWIN IMPELLER CENTRIFUGAL PUMPS - NM, NMS



#### Motor

2-pole induction motor, 50 Hz ( $n \approx 2900$  rpm).  
 NM, NMS: three-phase 230/400 V  $\pm 10\%$  up to 3 kW;  
 400/690 V  $\pm 10\%$  from 4 to 75 kW.  
 Insulation class F. Protection IP 54 (IP 55 for NMS).  
 Classification scheme IE2 for three-phase motor from 0,75 kW.  
 Constructed in accordance with: EN 60034-1;  
 EN 60034-30.

MATERIALS		
Components	NM, NMS	B-NM, B-NMS
Pump casing Lantern bracket NM Casing cover for NMS	Cast iron GJL 200EN 1561	Bronze G-Cu Sn 10 EN 1982
Lantern bracket NMS	Cast iron GJL 200 EN 1561	
Impeller	Cast iron GJL 200 EN 1561	Bronze G-Cu Sn 10 EN 1982
	Brass P- Cu Zn 40 Pb 2 UNI 5705 for NM 32/12-16-20, NM 40/20, B-NM 32/125-160-200, B-NM 40/200	
Shaft	AISI 303 up to 2.2 kW	Cr Ni Mo steel AISI 316
	AISI 430 from 3 kW to 75 kW	
Mechanical seal	Carbon - Ceramic - NBR	
Counter-flanges	Steel Fe 430B UNI 7070	

Performance $n \approx 2900$ rpm			
B-NM	NM	P2	
		kW	HP
MM CAL B-NM 32/12F	MM CAL NM 32/12FE	0,55	0,75
MM CAL B-NM 32/12D	MM CAL NM 32/12DE	0,75	1
MM CAL B-NM 32/12A	MM CAL NM 32/12AE	1,1	1,5
MM CAL B-NM 32/12S	MM CAL NM 32/12SE	1,5	2
MM CAL B-NM 32/16B	MM CAL NM 32/16BE	1,5	2
MM CAL B-NM 32/16A/A	MM CAL NM 32/16A/A	2,2	3
MM CAL B-NM 32/20D/A	MM CAL NM 32/20D/A	2,2	3
MM CAL B-NM 32/20C/A	MM CAL NM 32/20C/A	3	4
MM CAL B-NM 32/20A/A	MM CAL NM 32/20A/A	4	5,5

Performance $n \approx 2900$ rpm			
B-NM	NM	P2	
		kW	HP
MM CAL B-NM 40/12F	MM CAL NM 40/12F/A	1,1	1,5
MM CAL B-NM 40/12C	MM CAL NM 40/12C/A	1,5	2
MM CAL B-NM 40/12A/A	MM CAL NM 40/12A/B	2,2	3
MM CAL B-NM 40/16C/A	MM CAL NM 40/16C/B	2,2	3
MM CAL B-NM 40/16B/A	MM CAL NM 40/16B/B	3	4
MM CAL B-NM 40/16A/A	MM CAL NM 40/16A/B	4	5,5
MM CAL B-NM 40/20D/A	MM CAL NM 40/20D/A	4	5,5
MM CAL B-NM 40/20C/A	MM CAL NM 40/20C/A	4	5,5
MM CAL B-NM 40/200B/A	MM CAL NM 40/200B/A	5,5	7,5
	MM CAL NM 40/200A/A	5,5	7,5
MM CAL B-NM 40/200A/A	MM CAL NM 40/200A/A	7,5	10
MM CAL B-NM 4025/C/B	MM CAL NM 40/25C/B	9,2	12,5
MM CAL B-NM 4025/B/B	MM CAL NM 40/25B/B	11	15
MM CAL B-NM 4025A/B	MM CAL NM 40/25A/B	15	20

**COMPLETE DATASHEETS AND  
 TECHNICAL SPECIFICATIONS  
 AVAILABLE UPON REQUEST**

Performance n ≈ 2900 rpm			
B-NM	NM	P2	
		kW	HP
MM CAL B-NM 50/12F/A	MM CAL NM 50/12F/B	2,2	3
MM CAL B-NM 50/12D/A	MM CAL NM 50/12D/B	3	4
MM CAL B-NM 50/12A/A	MM CAL NM 50/12A/B	4	5,5
MM CAL B-NM 50/12S/A	MM CAL NM 50/12S/B	4	5,5
MM CAL B-NM 50/160B/B	MM CAL NM 50/16B/B	5,5	7,5
MM CAL B-NM 50/160A/B	MM CAL NM 50/16A/B	7,5	10
MM CAL B-NM 50/200B/B	MM CAL NM 50/20B/B	9,2	12,5
MM CAL B-NM 50/200A/B	MM CAL NM 50/20A/B	11	15
MM CAL B-NM 50/200S/B	MM CAL NM 50/20S/B	15	20
MM CAL B-NM 50/25C/B	MM CAL NM 50/25C/B	11	15
MM CAL B-NM 50/25B/B	MM CAL NM 50/25B/B	15	20
MM CAL B-NM 50/25A/B	MM CAL NM 50/25A/B	18,5	25
MM CAL B-NM 50/25/65E/A	MM CAL NM 50M/E/A	11	15
MM CAL B-NM 50/25/65D/A	MM CAL NM 50M/D/A	15	20
MM CAL B-NM 50/25/65C/A	MM CAL NM 50M/C/A	18,5	25

Performance n ≈ 2900 rpm			
B-NM - B-NMS	NM - NMS	P2	
		kW	HP
MM CAL B-NM 65/125C/A	MM CAL NM 65/12E/A	4	5,5
MM CAL B-NM 65/125A/A	MM CAL NM 65/12C/A	5,5	7,5
MM CAL B-NM 65/160E/A	MM CAL NM 65/16E/A	5,5	7,5
MM CAL B-NM 65/160D/A	MM CAL NM 65/16D/A	7,5	10
MM CAL B-NM 65/160C/A	MM CAL NM 65/16C/A	9,2	12,5
MM CAL B-NM 65/160B/A	MM CAL NM 65/16B/A	11	15
MM CAL B-NM 65/160A/A	MM CAL NM 65/16A/A	15	20
MM CAL B-NM 65/200C/A	MM CAL NM 65/20C/A	15	20
MM CAL B-NM 65/200B/A	MM CAL NM 65/20B/A	18,5	25
MM CAL B-NM 65/200A/A	MM CAL NM 65/200A/A	22	30
MM CAL B-NM 65/250C/A	MM CAL NM 65/250C/A	22	30
MM CAL B-NM 65/250B/A	MM CAL NM 65/250B/A	30	40
MM CAL B-NMS 65/250A	MM CAL NMS 65/250A	37	50

Performance n ≈ 2900 rpm			
B-NM - B-NMS	NM - NMS	P2	
		kW	HP
MM CAL B-NM 80/160E/A	MM CAL NM 80/16E/A	7,5	10
MM CAL B-NM 80/160D/A	MM CAL NM 80/16D/A	9,2	12,5
MM CAL B-NM 80/160C/A	MM CAL NM 80/16C/A	11	15
MM CAL B-NM 80/160B/A	MM CAL NM 80/16B/A	15	20
MM CAL B-NM 80/160A/A	MM CAL NM 80/16A/A	18,5	25
MM CAL B-NMS 80/200B	MM CAL NM 80/200B/A	22	30
MM CAL B-NMS 80/200A	MM CAL NM 80/200A/A	30	40
MM CAL B-NMS 80/250E	MM CAL NM 80/250E/A	22	30
MM CAL B-NMS 80/250D	MM CAL NM 80/250D/A	30	40
MM CAL B-NMS 80/250C	MM CAL NMS 80/250C	37	50
MM CAL B-NMS 80/250B	MM CAL NMS 80/250B	45	60
MM CAL B-NMS 80/250A	MM CAL NMS 80/250A	55	75
MM CAL B-NMS 100/200E	MM CAL NM 100/200E/A	18,5	25
MM CAL B-NMS 100/200D	MM CAL NM 100/200D/A	22	30
MM CAL B-NMS 100/200C	MM CAL NM 100/200C/A	30	40
MM CAL B-NMS 100/200B	MM CAL NMS 100/200B	37	50
MM CAL B-NMS 100/200A	MM CAL NMS 100/200A	45	60
MM CAL B-NMS 100/250B	MM CAL NMS 100/250B	55	75
MM CAL B-NMS 100/250A	MM CAL NMS 100/250A	75	100

- SPARE PARTS
  - REPAIR KITS
  - REBUILD KITS
  - GASKETS/SEALS KITS
  - REMAN PUMPS
- AVAILABLE UPON REQUEST**

**When ordering please provide:**

- Pump model
- Pump serial
- Part number (if known)



**SWIMMING-POOL AND WHIRPOOL PUMPS - SPA**



**Motor**  
 2-pole induction motor, 50 Hz (n = 2800 rpm).  
 SPA: three-phase 230/400 V ± 10%.  
 SPAM: single-phase 230 V ± 10%, with thermal protector.  
 Capacitor inside the terminal box.  
 Insulation class F.  
 Protection IP X5.  
 Classification scheme IE2 for three-phase motors from 0,75 kW.  
 Constructed in accordance with:  
 EN 60034-1; EN 60034-30.  
 EN 60335-1, EN 60335-2-41.

MATERIALS	
Component	Material
Pump casing Union coupling	ABS (Acrylonitrile-Butadiene-Styrene)
Diffuser cover Impeller	Glass reinforced thermoplastic: PPO-GF30, NORYL* Cr-Ni-Mostainless steel 1.4401 EN 10088 (AISI 316)
Diffuser-wall with wear-ring	1.4401 EN 10088 (AISI 316)
Mechanical seal	Ceramic alumina, Carbon, FPM

Performance n ≈ 2800 rpm		
3~	230 V (A)	400 V (A)
MM CAL SPA 11	2,8	1,6
MM CAL SPA 21/A	3	1,7
MM CAL SPA 31/A	3,7	2,2
MM CAL SPA 41	4,7	2,7



**SELF-PRIMING PUMPS - CA**



**Motor**  
 2-pole induction motor, 50 Hz (n = 2900 rpm).  
 CA: three-phase 230/400 V ± 10%.  
 CAM: single-phase 230 V ± 10%, with thermal protector.  
 Capacitor inside the terminal box.  
 Insulation class F.  
 Protection IP 54.  
 Classification scheme IE2 for three-phase motors from 0,75 kW.  
 Constructed in accordance with:  
 EN 60034-1; EN 60034-30.  
 EN 60335-1, EN 60335-2-41.

MATERIALS		
Component	CA	B-CA
Pump casing Lantern bracket	Cast iron GJL 200 EN 1561	Bronze G-Cu Sn 10 EN 1982
Impeller	Brass P- Cu Zn Pb 2 UNI 5705	
Shaft	Chrome steel 1.4104 EN 10088 AISI 430	Cr-Ni-Mo steel 1.4401 EN 10088 AISI 316
Mechanical seal	Carbon - Ceramic - NBR	

Performance n ≈ 2800 rpm		
3~	230 V (A)	400 V (A)
MM CAL CA 60E MM CAL B-CA 60E	1,7	1
MM CAL CA 80E MM CAL B-CA 80/A	2,8 2,3	1,6 1,3
MM CAL CA 90/A MM CAL B-CA 90/A	3	1,7
MM CAL CA 91/A MM CAL B-CA 91/A	3,7	2,2

**Fleet of 16 VANS and LORRIES**  
 TO DELIVER EVERYWHERE IN THE SHORTEST TIME



For your telephone orders ..... +39 0184 573346 press #1  
 E-mail orders and estimates ..... sales@mansuetomarine.it  
 Technical support ..... technical@mansuetomarine.it  
 Product Support & Data-Sheets ..... service@mansuetomarine.it  
 General Inquiries ..... info@mansuetomarine.it



IMMERSION PUMPS - VAL, SC



**Motor**  
2-pole induction motor, 50 Hz (n = 2900 rpm).  
CA: three-phase 230/400 V ±10%.  
CAM: single-phase 230 V ±10%, with thermal protector.  
Capacitor inside the terminal box.  
Insulation class F.  
Protection IP 54.  
Classification scheme IE2 for three-phase motors from 0,75 kW.  
Constructed in accordance with:  
EN 60034-1; EN 60034-30.  
EN 60335-1, EN 60335-2-41.

MATERIALS		
Component	VAL	SC
Pump casing Lower bearing housing*	Cast iron GJL 200 EN 1561	Cast iron GJL 200 EN 1561
Impeller	Brass P-Cu Zn 40 Pb 2 UNI 5705 for VAL 30	Brass P-Cu Zn 40 Pb 2 UNI 5705
	Cast iron GJL 200 EN 1561 for VAL 65	
Shaft	Steel C 40 UNI 7231	
Bearing bush	Tecnopolymer	
Shaft sleeve	Chromate Bronze for VAL65	-

\* Not existing for VAL

Performance n ≈ 2900 rpm		
3~	230 V (A)	400 V (A)
MM CAL VAL 30/A	2,3	1,3
MM CAL VAL 65E	7,5	4,3
MM CAL VAL 65-R/A	9,15	5,3
MM CAL SC 30/A	2,3	1,3
MM CAL SC 50/A	2,3	1,3



PERIPHERAL IMMERSION PUMPS - BVT



**Motor**  
2-pole induction motor, 50 Hz (n ≈ 2900 rpm).  
B-VT: three-phase 230/400 V ±10% (220-240 / 380-415 V).  
Insulation class F.  
Protection IP 54.  
Constructed in accordance with: EN 60034-1.

MATERIALS	
Component	Material
Pump casing	Bronze G-Cu Sn 10 EN 1982
Casing cover	Bronze G-Cu Sn 10 EN 1982
Impeller	Brass P- Cu Zn Pb 2 UNI 5705
Shaft	Chrome steel 1.4104 EN 10088 (AISI 430)
Bearing sleeve	Corrosion-resistant Cr-Mo steel
Bearing in the casing	Polymer
Screws	Cr-Ni steel 1.4301 EN 10088 (AISI 304)

Performance n ≈ 2900 rpm		
3~	230 V (A)	400 V (A)
MM CAL VAL B-VT60/170	1,9	1,1
MM CAL VAL B-VT65/170	2,8	1,6

EVERY MONTH FIND ON LINE THOUSANDS OF NEW BRANDS AND PRODUCTS

www.mansuetomarine.it



MANSUETO MARINE



CIRCULATING PUMPS - NC



**Motor**  
2-4-pole induction motor, 50 Hz.  
Three adjustable speeds.  
NC: three-phase 230V or 400 V.  
NCM: single-phase 230 V.  
Insulation class H.  
Protection IP 43.

MATERIALS	
Pump casing	Cast iron
Impeller	Stainless steel
Shaft	Stainless steel

Type	DN	PN	N° Poli		Pos.	P1 (W)	1 x 230V (A)		A (mm)	(Kg)
			2	4						
MM CAL NCM 40-80/220	40	6/10	✓		3	206	0,91	150	8,1	
						185	0,88			
						120	0,60			
MM CAL NCM 40-85/220	40	6/10	✓		3	277	1,20	175	8,8	
						250	1,16			
						172	0,85			

Type	DN	PN	N° Poli		Pos.	1/ min	P1 (W)	1 x 230V (A)		(Kg)
			2	4						
MM CAL NCM4 50-60/280	50	6/10	✓		3	1260	415	24,5	1,8	
						1030	300			
						740	230			
MM CAL NCM 50-120/280	50	6/10	✓		3	2720	830	24,5	3,6	
						1870	480			
						1450	390			

Type	DN	PN	N° Poli		Pos.	1/ min	P1 (W)	3 x 400V (A)		(Kg)
			2	4						
MM CAL NC 40-60/250	40	6/10	✓		3	1440	240	17,0	0,76	
						1200	160			
						660	100			
MM CAL NC4 40-40/250	40	6/10	✓		3	2790	320	17,5	0,74	
						2240	240			
						1440	140			
MM CAL NC 40-120/250	40	6/10	✓		3	2820	560	19,0	1,16	
						2200	400			
						1250	220			

Type	DN	PN	N° Poli		Pos.	1/ min	P1 (W)	3 x 400V (A)		(Kg)
			2	4						
MM CAL NC4 65-30/340	65	6/10	✓		3	1430	400	29,0	1,10	
						1150	260			
						600	120			
MM CAL NC4 65-60/340	65	6/10	✓		3	1370	600	29,0	1,25	
						950	360			
						450	120			
MM CAL NC 65-120/340	65	6/10	✓		3	2810	1560	31,0	2,80	
						2200	960			
						1250	460			

Type	DN	PN	N° Poli		Pos.	1/ min	P1 (W)	1 x 230V (A)		(Kg)
			2	4						
MM CAL NCM 40-60/250	40	6/10	✓		3	2690	285	17,5	1,20	
						2360	245			
						1820	225			
MM CAL NCM 40-120/250	40	6/10	✓		3	2750	550	19,0	2,35	
						2100	475			
						1270	355			

Type	DN	PN	N° Poli		Pos.	1/ min	P1 (W)	3 x 400V (A)		(Kg)
			2	4						
MM CAL NC4 80-60/360	80	10	✓		3	1350	960	33,5	2,20	
						1000	560			
						600	200			
MM CAL NC 80-120/360	80	10	✓		3	2800	2200	34,5	3,80	
						2160	1400			
						1200	550			

Type	DN	PN	N° Poli		Pos.	1/ min	P1 (W)	3 x 400V (A)		(Kg)
			2	4						
MM CAL NC4 50-40/280	50	6/10	✓		3	1450	340	24,0	1,05	
						1220	240			
						620	120			
MM CAL NC4 50-60/280	50	6/10	✓		3	1400	470	24,0	1,15	
						1000	300			
						560	100			
MM CAL NC 50-120/280	50	6/10	✓		3	2800	950	24,0	1,73	
						2330	540			
						1270	265			

FIND US ON facebook!  
www.facebook.com/mansuetomarine



www.mansuetomarine.it



**ACB 61G - ACB 80 - ACB 90 SELF-PRIMING EL/PUMPS**



**ACB 61G**



**ACB 80**

Bilge, chain washing, fire-fighting, intake diesel oil, water supply and all application with high air content liquids, etc.

**Construction Features:**

Body pump: BRONZE  
Impeller: BRONZE  
Shaft: STAINLESS STEEL AISI 316  
Mechanical seal. HIGH QUALITY IN CERAMIC, GRAPHITE INOX

**Motors:**

Insulation: "F" class  
Protections: "IP 22" D.C.; "IP 44/55" A.C.  
Voltages: 12 - 24V D.C.; 1~230V; ~230/400V; A.C. 50Hz

EL/PUMP	INST. POWER (kW)	VOLTAGE (V)	RPM
MM GNN ACB 61 G	0.18	12 - 24 C.C. - D.C.	3200
MM GNN ACB 61RG	0.25	12 - 24 C.C. - D.C.	3400
MM GNN ACB 80	0.37	12 - 24 C.C. - D.C.	3000
MM GNN ACB 90	0.44	24 C.C. - D.C.	2800
MM GNN ACB 60	0,15	230 1~, 230/400 3~ C.A. 50Hz	2800
MM GNN ACB 80	0.37	230 1~, 230/400 3~ C.A. 50Hz	2800
MM GNN ACB 90	0.55	230 1~, 230/400 3~ C.A. 50Hz	2800



**ACB 331 - ACB 332 - ACB 431 - ACB 531 SELF-PRIMING EL/ PUMPS**



**ACB 431**



**ACB 331**

Bilge, fire-fighting, chain washing, intake diesel oil, plants water supply, mixtures with high air content liquids handling, etc

**Construction Features:**

Body pump: BRONZE  
Impeller: BRONZE  
Shaft: STAINLESS STEEL AISI 316  
Mechanical seal. HIGH QUALITY ON CERAMIC, GRAPHITE INOX

**Motors:**

Insulation: "F" class  
Protections: "IP 22" for D.C. ; "IP 44/55" for A.C.  
Voltages: 24V D.C.  
230V 1~; 208/360V 230/400V 3~ A.C. 50/60Hz

EL/PUMP	INST. POWER (kW)	VOLTAGE (V)	RPM
MM GNN ACB 331/1	0.9	24 C.C.-D.C.	1500
MM GNN ACB 331/2	1.1	24 C.C.-D.C.	1500
MM GNN ACB 332	1.5	24 C.C.-D.C.	1500
MM GNN ACB 431	1.5	24 C.C.-D.C.	1500
MM GNN ACB 331/B	1.5	230 1~, 230/400 3~ C.A. 50Hz	1450
MM GNN ACB 331/A	1.8	230 1~, 230/400 3~ C.A. 60Hz	1750
MM GNN ACB 332/B	2.2	230 1~, 230/400 3~ C.A. 50Hz	1450
MM GNN ACB 431/C	3.0	230/400 3~ C.A. 50Hz	1450
MM GNN ACB 431/B	2.2	230 1~, 230/400 3~ C.A. 50Hz	1450
MM GNN ACB 431/A	3.0	230/400 3~ C.A. 60Hz	1750
MM GNN ACB 531	4	230 1~,230/400 3~ C.A. 50Hz	1450



**CP SELF-PRIMING EL/PUMPS**



**CP 20G**



**CP 30G**



**CP 40/100**

Intake diesel oil, intake liquids (sea and fresh water), grey water discharge (galley and showers), bilge, etc.

**Construction Features:**

Body pump: BRONZE  
Impeller: BRONZE  
Shaft: STAINLESS STEEL AISI 316  
Mechanical seal. HIGH QUALITY IN CERAMIC, GRAPHITE INOX

**Motors:**

Insulation: "F" class  
Protections: "IP 22" for D.C. ; "IP 44/55" for A.C.  
Voltages: 12 V D.C.; 24 V D.C.; 230V 1~; 230/400 V 3~ A.C. 50Hz (60Hz on request)

EL/PUMP	INST. POWER (kW)	ABSOR. (A)	VOLTAGE (V)	RPM
MM GNN CP 20/1 G	0.15	27 13	12 24 c.c. - d.c.	2600
MM GNN CP 20/2 G	0.30	32 18	24 c.c. - d.c.	2800
MM GNN CP 25/1 A	0.20	29 16	12 24 c.c. - d.c.	1900
MM GNN CP 25/2 A	0.40	24	24 c.c. - d.c.	2200
MM GNN CP 30 G	0.50	28	24 c.c. - d.c.	1500
MM GNN CP 32 A	0.60	34	24 c.c. - d.c.	2200
MM GNN CP 40	0.75	45	24 c.c. - d.c.	1500
MM GNN CP 40/160	1.5	62	24 c.c. - d.c.	1400
MM GNN CP 40/100	1.5	65	24 c.c. - d.c.	1400
MM GNN CP 20 G	0.37		230 1~ 230/400 3~ C.A. 50Hz	2800
MM GNN CP 30 G	0.37		230 1~ 230/400 3~ C.A. 50Hz	1450
MM GNN CP 30 G	0,55		230 1~ 230/400 3~ C.A. 60Hz	1750
MM GNN CP 32 A *	0.37		230 1~ 230/400 3~ C.A. 50Hz	1450
MM GNN CP 40	0.75		230 1~ 230/400 3~ C.A. 50Hz	1450
MM GNN CP 40/160	1.5		230 1~ 230/400 3~ C.A. 50Hz	1450
MM GNN CP 40/100	1.5		230 1~ 230/400 3~ C.A. 50Hz	1450
MM GNN CP 40/140	2.2		230 1~ 230/400 3~ C.A. 50Hz	1450
MM GNN CP 50/180	3.0		230 1~ 230/400 3~ C.A. 50Hz	1450
MM GNN CP 50/160	4.0		230 1~ 230/400 3~ C.A. 50Hz	1450
MM GNN CP 50/190	4.0		230 1~ 230/400 3~ C.A. 50Hz	1450

- SPARE PARTS
- REPAIR KITS
- REBUILD KITS
- GASKETS/SEALS KITS
- REMAN PUMPS

**AVAILABLE UPON REQUEST**

**When ordering please provide:**

- Pump model
- Pump serial
- Part number (if known)

**COMPLETE DATASHEETS AND TECHNICAL SPECIFICATIONS AVAILABLE UPON REQUEST**



**ALTERNATING CURRENT 50HZ SELF-PRIMING EL/PUMPS**



**ACM BT 50HZ (C.A. - A.C.)**

Bilge, fire-fighting, chain washing, intake diesel oil, plants water supply, mixtures with high air content liquids handling, etc

**Construction Features:**

Body pump: BRONZE  
Impeller: BRONZE  
Shaft: STAINLESS STEEL AISI 316  
Mechanical seal.: HIGH QUALITY IN CERAMIC, GRAPHITE INOX

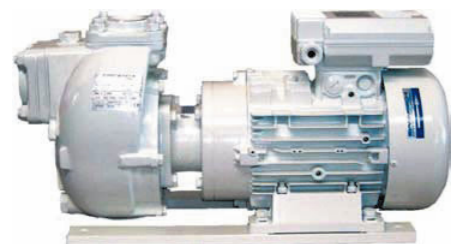
**Motors:**

Insulation: "F" class  
Protections: "IP 54/55"  
Voltages: 1~230V 50Hz  
3~230/380V - 400/690V 50Hz

EL/PUMP	INST. POWER (kW)	RPM
MM GNN ACM 311 BT	1,1	1450
MM GNN ACM 312 BT	2,2	1450
MM GNN ACM 313 BT	3	1450
MM GNN ACM 401 BT	2,2	1450
MM GNN ACM 402 BT	4	1450
MM GNN ACM 403 BT	5,5	1450
	7,5	1450



**BMA SELF-PRIMING EL/ PUMPS**



**BMA 40**



**BMA 65/203 Z**

Fire-fighting, ballast, bilge, chain washing, air conditioning system, water circulation in general, etc.

**Construction Features:**

Body pump: BRONZE  
Impeller: BRONZE  
Shaft: STAINLESS STEEL AISI 316  
Mechanical seal.: HIGH QUALITY ON CERAMIC, GRAPHITE INOX

**Motors:**

Insulation: "F" class  
Protections: "IP 22" for D.C. ; "IP 54/55" for A.C."  
Voltages: 24V D.C. - 1~230V 50Hz  
3~230/380V - 400/690V 50Hz

EL/PUMP	POWER (kW)	VOLTAGE (V)	RPM
MM GNN BMA 50/125	1,5	24 D.C.	3000
MM GNN BMA 50/125A	1,5	230 1~	2800
MM GNN BMA 40	3.0	230/400, 3~	2800
MM GNN BMA 50	5,5	230V 1~	2800
MM GNN BMA 50/180 S2	5,5	230/400, 3~	2800
MM GNN BMA 50/220	11	230/400, 3~	2800
MM GNN BMA 65/150	4.0	400/690, 3~	2800
MM GNN BMA 65/180 Z	11	400/690, 3~	2800
MM GNN BMA 65/190 Z	15	400/690, 3~	2800
MM GNN BMA 65/203 Z	18.5	400/690, 3~	2800



**SUB - SUBMERSIBLE EL/ PUMPS**



**MINI SUB**



**MAXI SUB-VORTEX**



**MAXI SUB**

Bilge discharge, tank emptying, basement, pool, etc...

**Construction Features:**

Body pump: ABS (Minisub); PPO-FG (Maxi-Sub)  
Impeller: ABS Polymer  
Shaft: STAINLESS STEEL AISI 316  
Mechanical seal.: HIGH QUALITY

**Motors:**

Insulation: "F" class  
Protections: "IP 68"

EL/PUMP	POWER (kW)	ABSOR. (A)	VOLTAGE (V)
MM GNN MINISUB3700	0.16	20 - 10	12 - 24 C.C.-D.C.
MM GNN MAXISUB	0.18	12 - 24	12 - 24 C.C.-D.C 230 1~, C.A./A.C. 50Hz.
MM GNN MAXISUBVORTEX	0.18	12 - 24	12 - 24 C.C.-D.C 230 1~, C.A./A.C. 50Hz.



**RULE GOLD SERIES 3700 NON-AUTOMATIC BILGE PUMP**

Flow Rate: 3700 GPH, Port Size: 1-1/2"  
Nominal Voltage: 12 Volt DC, Max. Current Draw: 15.5 Amps, Fuse: 25 Amp  
Moisture-Tight Seals, Double Insulated Motor for Vibration-Free Operation

Code: MM JAB 502682



**RULE GOLD SERIES 1500 NON-AUTOMATIC BILGE PUMP**

Flow Rate: 1500 GPH, Port Size: 1-1/8"  
Nominal Voltage: 12 Volt DC, Max. Current Draw: 4.8 Amps, Fuse: 10 Amp  
Moisture-Tight Seals, Double Insulated Motor for Vibration-Free Operation

Code: MM JAB 502681



**JABSCO 36960 SERIES DIAPHRAGM BILGE PUMP**

Flow Rate: 3700 GPH, Port Size: 1-1/2"  
Nominal Voltage: 12 Volt DC, Max. Current Draw: 15.5 Amps, Fuse: 25 Amp  
Moisture-Tight Seals, Double Insulated Motor for Vibration-Free Operation

Code: MM JAB 500723





**JABSCO 36680 SERIES DIAPHRAGM BILGE PUMP**



Flow Rate: 5.5 GPM, Port Size: 3/4"  
 Nominal Voltage: 12 Volt DC, Max. Current Draw: 7 Amps,  
 Fuse: 10 Amp  
 Pumpgard Inlet Strainer Supplied with Pump

Code: MM JAB 500724

**JABSCO 36600 SERIES DIAPHRAGM BILGE PUMP**



Flow Rate: 8 GPM, Port Size: 3/4"  
 Nominal Voltage: 12 Volt DC, Max. Current Draw: 11 Amps,  
 Fuse: 15 Amp  
 Pumpgard Inlet Strainer Supplied with Pump

Code: MM JAB 500725

**JABSCO 36600 SERIES DIAPHRAGM BILGE PUMP**



Flow Rate: 8 GPM, Port Size: 3/4"  
 Nominal Voltage: 24 Volt DC, Max. Current Draw: 5.5 Amps,  
 Fuse: 8 Amp  
 Pumpgard Inlet Strainer Supplied with Pump

Code: MM JAB 506380

**FLOJET 4125 SERIES BILGE PUMP**



Flow Rate: 5 GPM, Port Size: 3/4"  
 Nominal Voltage: 12 Volt DC, Max. Current Draw: 8.5 Amps,  
 Fuse: 15 Amp  
 Self-Priming, Capable of Running Dry without Damage

Code: MM JAB 500662

**RULE 1000 NON-AUTOMATIC BILGE PUMP**



Flow Rate: 1000 GPH, Port Size: 1-1/8"  
 Nominal Voltage: 12 Volt DC, Max. Current Draw: 2.9 Amps,  
 Fuse: 5 Amp  
 Pump Activated by Separate Float Switch (Not Included)

Code: MM JAB 500684

**RULE 1100 NON-AUTOMATIC BILGE PUMP**



Flow Rate: 1100 GPH, Port Size: 1-1/8"  
 Nominal Voltage: 12 Volt DC, Max. Current Draw: 3.3 Amps,  
 Fuse: 6 Amp  
 Pump Activated by Separate Float Switch (Not Included)

Code: MM JAB 500683

**RULE 2000 NON-AUTOMATIC BILGE PUMP**



**24 V**

Flow Rate: 2000 GPH, Port Size: 1-1/8"  
 Nominal Voltage: 24 Volt DC, Draw: 4 Amps, Fuse: 7.5 Amp  
 Pump Activated by Separate Float Switch (Not Included)

Code: MM JAB 501673

**RULE 2000 NON-AUTOMATIC BILGE PUMP**



Flow Rate: 2000 GPH, Port Size: 1-1/8"  
 Nominal Voltage: 12 Volt DC, Max. Current Draw: 8.4 Amps,  
 Fuse: 15 Amp  
 Pump Activated by Separate Float Switch (Not Included)

Code: MM JAB 500680



**RULE GOLD SERIES 2000 NON-AUTOMATIC BILGE PUMP**



Flow Rate: 2000 GPH, Port Size: 1-1/8"  
 Nominal Voltage: 12 Volt DC, Max. Current Draw: 8.4 Amps,  
 Fuse: 15 amp  
 Moisture-Tight Seals, Double Insulated Motor for Vibration-Free Operation

Code: MM JAB 500679

**RULE 3700 NON-AUTOMATIC BILGE PUMP**



Flow Rate: 3700 GPH, Port Size: 1-1/2"  
 Nominal Voltage: 12 Volt DC, Max. Current Draw: 15.5 Amps,  
 Fuse: 25 Amp  
 Pump Activated by Separate Float Switch (Not Included)

Code: MM JAB 500678

**RULE 2000 NON-AUTOMATIC BILGE PUMP**



**32 V**

Flow Rate: 2000 GPH, Port Size: 1-1/8"  
 Nominal Voltage: 32 Volt DC, Max. Current Draw: 3.1 Amps,  
 Fuse: 6 Amp  
 Pump Activated by Separate Float Switch (Not Included)

Code: MM JAB 501262

**RULE 4000 NON-AUTOMATIC BILGE PUMP**



Flow Rate: 4000 GPH, Port Size: 2"  
 Nominal Voltage: 12 Volt DC, Max. Current Draw: 15.5 Amps,  
 Fuse: 25 Amp  
 Pump Activated by Separate Float Switch (Not Included)

Code: MM JAB 500676

**RULE 1500 NON-AUTOMATIC BILGE PUMP**



Flow Rate: 1500 GPH, Port Size: 1-1/8"  
 Nominal Voltage: 12 Volt DC, Max. Current Draw: 4.8 Amps,  
 Fuse: 10 Amp  
 Pump Activated by Separate Float Switch (Not Included)

Code: MM JAB 500681

**RULE 800 NON-AUTOMATIC BILGE PUMP**



Flow Rate: 800 GPH, Port Size: 3/4"  
 Nominal Voltage: 12 Volt DC, Max. Current Draw: 2.8 Amps,  
 Fuse: 5 Amp  
 Pump Activated by Separate Float Switch (Not Included)

Code: MM JAB 500685

**RULE 500 NON-AUTOMATIC BILGE PUMP**



Flow Rate: 500 GPH, Port Size: 3/4"  
 Nominal Voltage: 12 Volt DC, Max. Current Draw: 1.9 Amps,  
 Fuse: 2.5 Amp  
 Pump Activated by Separate Float Switch (Not Included)

Code: MM JAB 500686

**RULE 500 NON-AUTOMATIC BILGE PUMP**



**24 V**

Flow Rate: 500 GPH, Port Size: 3/4"  
 Nominal Voltage: 24 Volt DC, Max. Current Draw: 0.9 Amps,  
 Fuse: 1.5 Amp  
 Pump Activated by Separate Float Switch (Not Included)

Code: MM JAB 500687

**RULE 360 NON-AUTOMATIC BILGE PUMP**

Flow Rate: 360 GPH, Port Size: 3/4"  
Nominal Voltage: 12 Volt DC, Max. Current Draw: 2.1 Amps,  
Fuse: 2.5 Amp  
Pump Activated by Separate Float Switch (Not Included)

Code: MM JAB 500690

**RULE-MATE 1500 AUTOMATED BILGE PUMP**

Flow Rate: 1500 GPH, Port Size: 1-1/8"  
Nominal Voltage: 12 Volt DC, Max. Current Draw: 4.8 Amps,  
Fuse: 10 Amp  
Pump and Electronic Water Sensing Device in a Single, Compact Housing

Code: MM JAB 502557

**RULE 1100 ELECTRONIC AUTOMATIC BILGE PUMP**

Flow Rate: 1100 GPH, Port Size: 1-1/8"  
Nominal Voltage: 12 Volt DC, Max. Current Draw: 3.3 Amps,  
Fuse: 5 Amp  
Pump Automatically Checks for Water Every 2-1/2 Minutes

Code: MM JAB 500682

**RULE 2000 ELECTRONIC AUTOMATIC BILGE PUMP**

Flow Rate: 2000 GPH, Port Size: 1-1/8"  
Nominal Voltage: 12 Volt DC, Max. Current Draw: 8.4 Amps,  
Fuse: 15 Amp  
Pump Automatically Checks for Water Every 2-1/2 Minutes

Code: MM JAB 500674

**RULE 500 ELECTRONIC AUTOMATIC BILGE PUMP - 12 VOLT**

Flow Rate: 500 GPH, Port Size: 3/4"  
Nominal Voltage: 12 Volt DC, Max. Current Draw: 1.9 Amps,  
Fuse: 2.5 Amp  
Pump Automatically Checks for Water Every 2-1/2 Minutes

Code: MM JAB 500688

**RULE-MATE 2000 AUTOMATED BILGE PUMP**

Flow Rate: 2000 GPH, Port Size: 1-1/8"  
Nominal Voltage: 12 Volt DC, Max. Current Draw: 8.4 Amps,  
Fuse: 15 Amp  
Pump and Electronic Water Sensing Device in a Single, Compact Housing

Code: MM JAB 502558

**RULE 1800 ELECTRONIC AUTOMATIC BILGE PUMP**

Flow Rate: 1800 GPH, Port Size: 1-1/8"  
Nominal Voltage: 110 Volt AC, Power Consumption: 100 Watts  
Pump Automatically Checks for Water Every 2-1/2 Minutes

Code: MM JAB 500649

**RULE 3700 ELECTRONIC AUTOMATIC BILGE PUMP**

Flow Rate: 3700 GPH, Port Size: 1-1/2"  
Nominal Voltage: 12 Volt DC, Max. Current Draw: 15.5 Amps,  
Fuse: 25 Amp  
Pump Automatically Checks for Water Every 2-1/2 Minutes

Code: MM JAB 500673

**RULE-MATE 500 AUTOMATED BILGE PUMP**

Flow Rate: 500 GPH, Port Size: 3/4" No Float Switch Required  
Specify Voltage, Max. Current Draw: 2 Amps @ 12 Volt DC  
Pump and Electronic Water Sensing Device in a Single, Compact Housing

Code: MM JAB 501517

**RULE-MATE 1100 AUTOMATED BILGE PUMP**

Flow Rate: 1100 GPH, Port Size: 1-1/8"  
Specify Voltage, Max. Current Draw: 3.4 Amps @ 12 Volt DC  
Pump and Electronic Water Sensing Device in a Single, Compact Housing

Code: MM JAB 501519

**JABSCO UTILITY HAND PUMP**

Flow Rate: 15 Strokes per Gallon, Port Size: 1/2" Hose Connection  
Power: Manual, Includes 5'- 1/2" Hose  
Applications Include Bilge Pumping, Oil Draining, Diesel Fuel Transfer

Code: MM JAB 501415

**FLOJET 4105 SERIES CIRCULATION / FEEDER PUMP**

Flow Rate: 3.3 GPM, 10 PSI Max., Port Size: 3/4"  
Nominal Voltage: 12 Volts DC, Max. Current Draw: 3.6 Amps,  
Fuse: 10 Amp  
General-Purpose Pump Suitable for Diesel Transfer

Code: MM JAB 500668

[www.mansuetomarine.it](http://www.mansuetomarine.it)

**RULE-MATE 750 AUTOMATED BILGE PUMP**

Flow Rate: 750 GPH, Port Size: 3/4"  
Specify Voltage, Max. Current Draw: 2.7 Amps @ 12 Volt DC  
Pump and Electronic Water Sensing Device in a Single, Compact Housing

Code: MM JAB 501518

**RULE 4000 ELECTRONIC AUTOMATIC BILGE PUMP**

Flow Rate: 4000 GPH, Port Size: 1-1/2"  
Nominal Voltage: 12 Volt DC, Max. Current Draw: 15.5 Amps,  
Fuse: 25 Amp  
Pump Automatically Checks for Water Every 2-1/2 Minutes

Code: MM JAB 500672

**RULE GENERAL PURPOSE CENTRIFUGAL PUMP**

Flow Rate: 3800 GPH, Port Size: 1-1/2"  
Nominal Voltage: 12 Volt DC, Max. Current Draw: 15.5 Amps,  
Fuse: 25 Amp  
Designed for Use as Washdown Pump or to Circulate Water to Livewell Tanks

Code: MM JAB 500677

**FLOJET 4125 SERIES DIAPHRAGM PUMP**

Flow Rate: 5.0 GPM, 10 PSI Max., Port Size: 3/4"  
Nominal Voltage: 12 Volt DC, Max. Current Draw: 8.5 Amps,  
Fuse: 15 Amp  
Bait Tank, Diesel Transfer and General-Purpose Pump, Includes Inlet Strainer

Code: MM JAB 500669

MANSUETO MARINE



**JABSCO WATER PUPPY BRONZE PUMP**



Flow Rate: 6.3 GPM, Port Size: 1/2" FPT, 1" Hose  
Nominal Voltage: 12 Volts DC, Max. Current Draw: 8 Amps, Fuse: 15 Amp  
Designed for Bilge, Livewell, Washdown and General Pumping Requirements

Code: MM JAB 502560

**JABSCO LIGHT DUTY VANE PUMP**



Flow Rate: 6 GPM, Port Size: 1/2" or 1"  
Nominal Voltage: 12 Volt DC, Max. Current Draw: 8 Amps, Fuse: 15 Amp  
Self-Priming, Ideal for Diesel Fuel Transfer

Code: MM JAB 500551

**RULE IL500 PLUS PORTABLE PUMP KIT**



Flow Rate: 500 GPH, 14 PSI Max., Port Size: 3/4"  
Nominal Voltage: 12 Volt DC, Max. Current Draw: 6 Amps  
Kit Includes Pump, 13' Hose, Spray Nozzle and 12 Volt DC Battery Clips

Code: MM JAB 506388

**WHALE UNIVERSAL FRESHWATER PRESSURE PUMP**



Flow Rate: 4.75 GPM, 45 PSI Max., Port Size: 3/4"  
Nominal Voltage: 12 Volt DC, Fuse: 12 Amp  
Includes Inlet Strainer, 4-Diaphragm Design Ensures Consistent Flow

Code: MM JAB 501282

**JABSCO COMMERCIAL CIRCULATION PUMP**



Flow Rate: 2.7 GPM, Port Size: 3/4"  
Nominal Voltage: 12 Volt DC, Max. Current Draw: 1.2 Amps, Fuse: 2 Amp  
Magnetic Drive Hot Water Circulation Pump

Code: MM JAB 502387

**JABSCO BALLAST PUPPY WAKEBOARD TOWBOAT BALLAST PUMP**



Flow Rate: 11 GPM, Port Size: 1/2" FPT, 1" Hose  
Nominal Voltage: 12 Volt DC, Max. Current Draw: 11.5 Amps, Fuse: 20 Amp  
Designed to Pump Water Into and Out of Wakeboard Liquid Ballast Tanks

Code: MM JAB 501058

**JABSCO PAR-MAX 3.5 SHOWER DRAIN / GENERAL PURPOSE PUMP**



Flow Rate: 3.5 GPM, Port Size: 3/4"  
Nominal Voltage: 12 Volt DC, Max. Current Draw: 9 Amps, Fuse: 15 Amp  
Serves (3) or More Outlets with Exceptional Flow & Consistent Water Pressure

Code: MM JAB 506377

**RULE CHARGE N' FLOW PORTABLE AND RECHARGEABLE PUMP KIT**



Flow Rate: 280 GPH, Pumps up to 100 Gallons per Charge  
Nominal Voltage: 12 Volt DC with Rechargeable Battery  
Versatile, Compact Pump with Multiple Power Options

Code: MM JAB 501410



**RULE POOL COVER DRAIN PUMP WITH LEAF PROTECTOR**



110 V

Flow Rate: 1800 GPH, Port Size: Garden Hose  
Nominal Voltage: 110 Volt AC, Power Consumption: 100 Watts  
Includes 24 ft. Cord

Code: MM JAB 501411

**RULE AQUACHARGE PORTABLE WATER PUMP KIT**



Flow Rate: Up to 50 Gallons in Less than 10 Minutes, Port Size: Garden Hose  
Nominal Voltage: 12 Volt DC or 100 Volt AC  
Kit Includes Pump, 8' Hose, Battery and AC / DC Charging Station

Code: MM JAB 502619

**RULE 3-WAY LIGHTED PANEL SWITCH**



3-Position Toggle Switch (Automatic / Off / Manual) with Indicator Light  
Specify Voltage, Max. Current Draw: 20 Amps @ 12 Volt DC  
Controls Any Bilge Pump Equipped with an Automatic Float Switch

Code: MM JAB 501497

**RULE 3-WAY LIGHTED ROCKER PANEL SWITCH**



3-Position Rocker Switch (Automatic / Off / Manual) with Indicator Light  
Nominal Voltage: 24 Volt DC, Max. Current Draw: 10 Amps  
Controls Any Bilge Pump Equipped with an Automatic Float Switch

Code: MM JAB 502677

**JABSCO COMMERCIAL DUTY WATER PUPPY BRONZE PUMP**



Flow Rate: 8 GPM, Port Size: 1/2" FPT, 1" Hose Barb  
Nominal Voltage: 12 Volt DC, Max. Current Draw: 11.5 Amps, Fuse: 20 Amp  
Applications Include Bilge Pumping, Livewell Circulation and Washdowns

Code: MM JAB 506395

**JABSCO HIGH PRESSURE CENTRIFUGAL CYCLONE PUMP**



24 V

Flow Rate: 21 GPM, Port Size: 3/4"  
Nominal Voltage: 24 Volt DC, Max. Current Draw: 10.5 Amps, Fuse: 15 Amp  
Circulation Applications Include Hot Water Systems, Bait Tank Installations

Code: MM JAB 506420

**RULE 3-WAY LIGHTED ROCKER PANEL SWITCH**



3-Position Rocker Switch (Automatic / Off / Manual) with Indicator Light  
Nominal Voltage: 12 Volt DC, Max. Current Draw: 20 Amps  
Controls Any Bilge Pump Equipped with an Automatic Float Switch

Code: MM JAB 502676

**RULE 3-WAY PANEL SWITCH**



3-Position Toggle Switch (Automatic / Off / Manual)  
Nominal Voltage: 12 / 24 / 32 Volt DC, Max. Current Draw: 20 Amps  
Dimensions: 2" H x 2-1/4" W

Code: MM JAB 502678





**RULE 2-WAY PANEL SWITCH**



Simple 2-Position Toggle Switch (On / Off)  
Nominal Voltage: 12 / 24 / 32 Volt DC, Max. Current Draw: 20 Amps  
Dimensions: 2" H x 2-1/4" W

Code: MM JAB 502679

**RULE HIGH WATER BILGE ALARM - 33ALA**



Rule-A-Matic Plus Automatic Float Switch with In-Dash Gauge  
Nominal Voltage: 12 Volt DC, Max. Current Draw: 20 Amps  
In-Dash Gauge Features Visual and 85 dB Audible Alarms

Code: MM JAB 500054

**RULE SUPERSWITCH FLOAT SWITCH - 37A**



Mercury-Free Automatic Float Switch  
Nominal Voltage: 12 / 24 / 32 Volt DC, Max. Current Draw: 20 Amps  
Heavy Duty Float Switch Converts Any Pump to Automatic Operation

Code: MM JAB 500052

**RULE SUPERSWITCH FLOAT SWITCH - 37FA**



Mercury-Free Automatic Float Switch with Inline Fuse Holder  
Nominal Voltage: 12 / 24 / 32 Volt DC, Max. Current Draw: 20 Amps  
Heavy Duty Float Switch Converts Any Pump to Automatic Operation

Code: MM JAB 500053

**RULE-A-MATIC PLUS FLOAT SWITCH - 40A**



Mercury-Free Automatic Float Switch with Integrated Cover  
Nominal Voltage: 12 / 24 / 32 Volt DC, Max. Current Draw: 20 Amps  
Detachable Mounting Base for Easy Installation, Inspection and Cleaning

Code: MM JAB 500055

**RULE-A-MATIC FLOAT SWITCH - 35A**



Mercury-Free Automatic Float Switch  
Nominal Voltage: 12 / 24 / 32 Volt DC, Max. Current Draw: 14 Amps  
Detachable Mounting Base for Easy Installation, Inspection and Cleaning

Code: MM JAB 500050

**RULE-A-MATIC FLOAT SWITCH - 35FA**



Mercury-Free Automatic Float Switch with Inline Fuse Holder  
Nominal Voltage: 12 / 24 / 32 Volt DC, Max. Current Draw: 14 Amps  
Detachable Mounting Base for Easy Installation, Inspection and Cleaning

Code: MM JAB 500051

**FOR BILGE MAINTENANCE CHEMICALS**  
**PLEASE GO TO SECTION 27**

MANSUETO MARINE

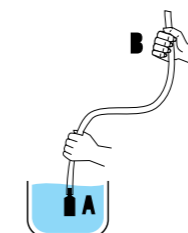


**SUCTION HAND PUMP**

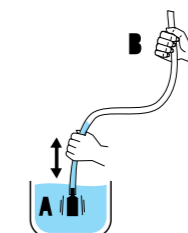


Length 160cm

Code	Diameter (mm)
MM LZS 70002	19
MM LZS 70003	25

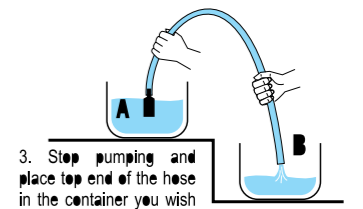


1. Place the bottom end A of the hosepipe into the tank with the liquid that you wish to pump out and hold the top end B of the hosepipe upright



2. Shake the bottom end of the hose vigorously up and down until the liquid rises in the hose, continue pumping until the liquid passes balance level

**ATTENTION:** Make sure that the empty container is placed below the level of the container you wish to empty



3. Stop pumping and place top end of the hose in the container you wish to fill and the liquid will flow automatically

**SUITABLE FOR PETROL - DIESEL - WATER**



**ORCA AUTO 1300 ELECTRIC BILGE PUMP**



**Integrated Electronics**  
Fully potted IC built in intelligent control.  
Microprocessor electronics sealed for protection against water ingress.

**Fully Protected**  
Robust housing made from fuel resistant ABS.

**Easy Install**  
25mm (1") 28mm (1 1/8") stepped connection ports to suit your installation.

**Efficiency**  
Large surface area ensures maximum area exposed to bilge water

Code	MM WHA BE1482	MM WHA BE1484
Nominal Voltage	12 V d.c.	24 V d.c.
Open Flow Rate @13.6 V d.c.	1300 US GPH (82 l/min)	1300 US GPH (82 l/min)
Flow rate at 1m (3ft) head	1100 GPH (65 l/min)	1100 GPH (65 l/min)
Current Draw	5 Amps	2.5 Amps
Recommended Automotive Fuse Size	7 Amp	5 Amp
Weight	0.9 kg (2lbs)	
Hose Connection	Stepped ports 1" and 1 1/8"	
Wire Size	16 AWG x 1m (3ft)	
Maximum Discharge Head	4.5m (14.8ft)	
Overall Height	129mm (5.1")	
Overall Width	168mm (6.6")	
Overall depth	121mm (4.8")	
Materials	Pump Body- ABS, Seals: Nitrile®, Impeller: Acetal	



**BILGE IC ELECTRIC BILGE PUMP**



**Simple Installation**  
Integrated non return valve.

**Strainer IC**  
with IC electronics built in.

**Sensor Switch**  
Non return valve strainer pump.

**Fully Protected Pump**  
with integrated electronics - intelligent control

**Secure Mounting**  
Securing strap - Ensures pump remains in place in marine conditions.

**3 feet design**  
- Only 3 screws to fit

**Ease of Installation**  
Head rotates 360° to suit your installation

**Easy clean strainer**

Code	MM WHA SI8284	MM WHA SI8484
Voltage	12 V d.c.	24 V d.c.
Voltage Range	10 V to 13.6 V d.c.	21.6 V to 27.2 V d.c.
Recommended Automotive Fuse Size	10 Amp	5 Amp
Minimum wire size	1.5 mm2 (16 AWG)	
Cable Length	4m (12ft)	
Current Profile	Soft start / stop	
Weight	2.6kg (6.5 lbs)	
Current draw on Standby	Low power 0.01 Amps supply	
Maximum Suction Lift	3m (10ft)	
Maximum Discharge Head	3m (10ft)	
Lift/head Combined	4m (12ft)	
Hose Connections	Gulper® IC - Barbed connections, 3/4" (19mm) or 1" (25mm) Strainer IC - 3/4" (19mm)	
Port Orientation	Horizontal (Easily changed to vertical)	
Connectors	IP68, Waterproof Quick Connect 7 way (directly onto Gulper® IC)	
Materials	Pump Head: Glass-filled Nylon, Valves - Nitrile®, Diaphragm: Santoprene®	
Materials in contact with fluid	Glass-filled Nylon, Nitrile®, Santoprene®	
Service Kits	AK2050 - Replacement Pump Head (available separately)	

www.mansuetomarine.it



**ORCA ELECTRIC BILGE RANGE**



**Efficiency**  
Large surface area ensures maximum area exposed to bilge water.

**Robust housing**  
Fuel resistant ABS.

**Easy maintenance**  
Easy access to motor cartridge and filter.

**Easy release cover**  
Simply press both buttons and pull to release.

**Versatile installation**  
Choose from multiple wire location options.

**Simple plumbing**  
500 models - 19 mm (3/4") ports  
950, 1300 models - 25mm (1") or 28.5mm (1 1/8") stepped port connections  
2000 models - 28.5mm (1 1/8")  
3000 models - (32mm) (1 1/4")

Model	500 US GPH	950 US GPH	1300 US GPH	1300 US GPH	2000 US GPH	2000 US GPH	3000 US GPH	3000 US GPH
Code	MM WHA BE0500	MM WHA BE0950	MM WHA BE1450	MM WHA BE1454	MM WHA BE2002	MM WHA BE2004	MM WHA BE3002	MM WHA BE3004
Open Flow Rate @13.6 V d.c.	500 GPH (32 l/min)	950 GPH (59 l/min)	1300 GPH (82 l/min)		2000 US GPH (126 l/min)		3000 US GPH (189 l/min)	
Flow Rate at 1m (3ft) head	450 GPH (28 l/min)	850 GPH (53 l/min)	1100 GPH (69 l/min)		1650 US GPH (104 l/min)		2700 US GPH (170 l/min)	
Nominal Voltage	12 V d.c.				12 V d.c.	24 V d.c.	12 V d.c.	24 V d.c.
Current Draw	1.5 amps	3.5 amps	5.0 amps	2.5 amps	10 amps	5.0 amps	18 amps	9 amps
Recommended Automotive Fuse	2.0 Amp	5.0 Amp	7.0 Amp	5.0 Amp	15 Amp	8 Amp	27 Amp	13 Amp
Hose Connection	3/4" (19mm)	1 1/8" (25/28.5mm)	1 1/8" (25/28.5mm)		1 1/8" (28.5mm)		1 1/4" (32mm)	
Wire Size	1.5mm2 (16 AWG)							
Materials	Pump Body- ABS, Seals: Nitrile®, Impeller: Acetal							
Maximum Discharge Head	3 m (9.8ft)	3.5m (11.5ft)	4.5m (14.8ft)		4 m (13 ft)		4.6 m (15ft)	
Overall Height	83mm (3.3")	109mm (4.3")	129mm (5.1")		165mm (6.5")		195mm (7.7")	
Overall Width	102mm (4")	135mm (5.3")	168mm (6.6")		144mm (5.7")		166mm (6.5")	
Overall Depth	78.5mm (3.1")Ø	103mm (4.1")Ø	121mm (4.8")Ø		120.5mm (4.74")Ø		132mm (5.1")Ø	

ALL OUR PRODUCTS  
ARE DISTRIBUTED IN EVERY  
**CAPTAIN MARINE STORE**

[www.captainmarine.it](http://www.captainmarine.it)  
Find your nearest CMS



MANSUETO MARINE



**GULPER® 320 ELECTRIC BILGE PUMP**



**Ezi-clamp**  
Twist and single screw to secure.

**Securing strap**  
- Ensures pump remains in place in harsh marine conditions.

**Secure**  
Three feet design - only 3 screws required

**Reliability**  
Double outlet valves for continuous flow

**Simple plumbing**  
- Barbed connections for either 19 mm (3/4") or 25mm (1") hose size

**Straight forward installation**  
- Multi directional head rotates 360° for convenient installation

**Easy maintenance**  
- Non choke valves, no filter to block or clean

Code	MM WHA BP2052 (includes 3/4" strainer)	MM WHA BP2054 (includes 3/4" strainer)
Voltage	12 V d.c.	24 V d.c.
Hose Connections	3/4" (19mm) + 1" (25mm)	
Recommended Fuse Size	10 Amp Automotive	5 Amp Automotive
Minimum Wire Size	1.5 mm2 (16 AWG)	
Weight	1.6 kg (3.5 lbs)	
Materials	Pump Head: Glass-filled Nylon, Valves and Diaphragm: Santoprene®	
Accessories	SB3422 (19mm) strainer (multi-directional port) Service Kit: AK2050 - replacement pump head	
Maximum Suction Lift	3m (10ft)	
Maximum Discharge Head	3m (10ft)	
Maximum Discharge Head and Suction Lift Combined	4m (13.5ft)	



**FRESH IC ELECTRIC FRESHWATER GALLEY PUMP**



**Robust**  
Industry Approved IP65 Pump

**Fully Protected**  
Integrated electronics intelligent control monitors and responds to variations in the whole system

**Easy Install**

- Quick Connect inlet and outlet ports
- Feet rotate to suit existing installations

**Easy Maintenance**  
Easily maintained clear lid for inspection. Prevents debris from entering the pump

Code	MM WHA FW5082	MM WHA FW5084
Voltage	12 V d.c.	24 V d.c.
Open flow rate/minute	13ltrs (3.4 US gals)	
Ingress Protection Rating	IP65	
Recommended Automotive Fuse Size	12 Amp	6 Amp
Minimum Wire Size	2.5 mm2 (13 AWG)	
Weight	2.95kg (6.6lbs)	
Static System Pressure	2.5 bar (36 psi)	
Maximum Running Pressure	4.4 bar (62psi)	
Hose Connections	Whale Quick Connect 15mm female. For 1/2" (13mm) flexible hose use WX1584 (supplied with retail kit)	
Materials	Pump Body: Glass-filled Polypropylene Motor Casing: Powder-coated Steel Feet, diaphragm & valves: Monoprene®, Santoprene® Seals: Nitrile®, Fasteners: Stainless Steel	
Materials in Contact with fluid	Glass-filled polypropylene, Monoprene®, Nitrile®, Stainless Steel, Santoprene®	
Service Kits	AK1319 - Replacement strainer (available separately)	

BIG QUANTITIES  
SMALL PRICES

[info@mansuetomarine.it](mailto:info@mansuetomarine.it)

[www.mansuetomarine.it](http://www.mansuetomarine.it)



**UNIVERSAL ELECTRIC FRESHWATER GALLEY PUMP**



**Reliable performance**  
High spec motor  
**Extra protected electrics**  
Built in wiring and pressure switch  
**Straight forward installation**  
Connects directly to Whale Quick Connect 15mm Pipework. Fittings also included to easily connect to 3/8" or 1/2" hose

**Smooth constant flow**  
4 diaphragm design provides consistent flow  
**Easy maintenance**  
Strainer with clear lid for inspection prevents debris from entering the pump  
**Easy inspection**  
Clear strainer

Model	8 ltrs (2.2 US gals)		12 ltrs (3.2 US gals)			18 ltrs (4.75 US gals)		
Code	MM WHA UF0812	MM WHA UF0815	MM WHA UF1212	MM WHA UF1214	MM WHA UF1215	MM WHA UF1225	MM WHA UF1815	MM WHA UF1825
Open Flow Rate per Minute	8 ltrs (2.2 US gals)		12 ltrs (3.2 US gals)			18 ltrs (4.75 US gals)		
Voltage	12 V d.c.					24 V d.c.		
Recommended Fuse Size	5 amp		8 amp		4 amp		12 amp	8 amp
Weight	2.4 kg (5.3 lbs)					2.9 kg (6.4 lbs)		
Hose Connections	Whale Quick Connect 15 mm Female For 1/2" Flexible Hose Use WX1584 (supplied with pump) For 3/8" Flexible Hose Use WU1215 + WU1280 (not supplied with pump)					3/4" Male Threaded Connections		
Connection to Quick Connect 15 mm Plumbing	NO ADAPTOR REQUIRED For Other Systems - Contact Whale					For Whale Quick Connect 15 mm Use WX1542 (not supplied with pump)		
Additional Fittings	1/2" BSP Male Adaptors WX1587 x 2 (supplied with pump) 1/2" Flexible Hose Adaptors WX1584 x 2 (supplied with pump)					3/4" Flexible Hose Adaptors x 2 (supplied with pump)		
Minimum Wire Size	2.5 mm <sup>2</sup> (13 AWG)							
Cut Out Pressure	1 bar (15 psi)	3 bar (45 psi)	1 bar (15 psi)	2 bar (30 psi)	3 bar (45 psi)			
Materials	Pump Body: Glass-filled Polypropylene, Motor Casing: Aluminium, Power-coated Steel Diaphragm, Valves, Feet: Monprene®, Seals: Nitrile®, Fasteners: Stainless Steel							
Materials in Contact With Fluid	Glass-filled Polypropylene, Monprene®, Nitrile®, Stainless Steel							
Service Kits	AK1316 - Replacement Head AK1317 - Microswitch AK1319 - Replacement Strainer							
Maximum Suction Lift	3 m (10 ft)							
Maximum Discharge Head	10 m (33 ft)	30 m (98 ft)	10 m (33 ft)	20 m (66 ft)	30 m (98 ft)			

**AVAILABLE UPON REQUEST:**

- **PUMPS (COMPLETE)**
- **SPARE PARTS**
- **REPAIR KITS**

for



**GREY IC ELECTRIC GREY WASTE PUMP**



**Secure fit**  
New wrap around mounting feature  
**IC built in intelligent**  
Control microprocessor electronics sealed for protection against water ingress

**Pre-wired** with waterproof electronic connectors prevents damage from capillary action and electrolysis

**Head rotates 360°**  
to suit your installation  
**Non choke valves**  
No filter to block or clean  
**Two Way Manifold**  
handles waste from multiple drains



**GULPER® 320 ELECTRIC GREY WASTE PUMP**



**Ezi-clamp**  
Twist and single screw to secure.

**Securing strap**  
- Ensures pump remains in place in harsh marine conditions.

**Secure**  
Three feet design - only 3 screws required

**Reliability**  
Double outlet valves for continuous flow

**Simple plumbing**  
- Barbed connections for either 19 mm (3/4") or 25mm (1") hose size

**Straight forward installation**  
- Multi directional head rotates 360° for convenient installation

**Easy maintenance**  
- Non choke valves, no filter to block or clean

Code	MM WHA WM8284	MM WHA WM8484
Voltage	12 V d.c.	24 V d.c.
Voltage Range	10 to 13.6 V d.c.	21.6 V d.c. to 27.2 V d.c.
Current profile	Soft stop/ start	
Recommended fuse Size (Automotive)	10 Amp	5 Amp
Minimum Wire Size	1.5mm (16 AWG)	
Weight	1.6 kg (3.5 lbs)	
Maximum Suction Lift	3m (10ft)	
Maximum Discharge Head	3 m (10 ft)	
Maximum Discharge head and Suction life combined	4m (12 ft)	
Hose connections	barbed connections 3/4" (19mm) and 1" (25mm)	
Materials	Pump head- Glass-filled Nylon, Valves, and Diaphragm - Santoprene®, clamp ring Acetal, Feet - EPDM, Gear wheel- Delrin®, fasteners Stainless Steel	
Materials in contact with fluid	Glass-filled Nylon, Santoprene®, Stainless Steel	
Service Kit (available Separately)	AK2050- Replacement Pump Head IC	
Accessories	none required	

Code	MM WHA BP2052	MM WHA BP2054
Voltage	12 V d.c.	24 V d.c.
Hose Connections	3/4" (19mm) + 1" (25mm)	
Recommended Fuse Size	10 Amp Automotive	5 Amp Automotive
Minimum Wire Size	1.5 mm <sup>2</sup> (16 AWG)	
Weight	1.6 kg (3.5 lbs)	
Materials	Pump Head: Glass-filled Nylon, Valves and Diaphragm: Santoprene®	
Accessories	Service Kit: AK2050 - replacement pump head	
Maximum Suction Lift	3m (10ft)	
Maximum Discharge Head	3m (10ft)	
Maximum Discharge Head and Suction Lift Combined	4m (13.5ft)	

FOLLOW US ON **Twitter!**  
[www.twitter.com/mansuetomarine](http://www.twitter.com/mansuetomarine)



TOILETS



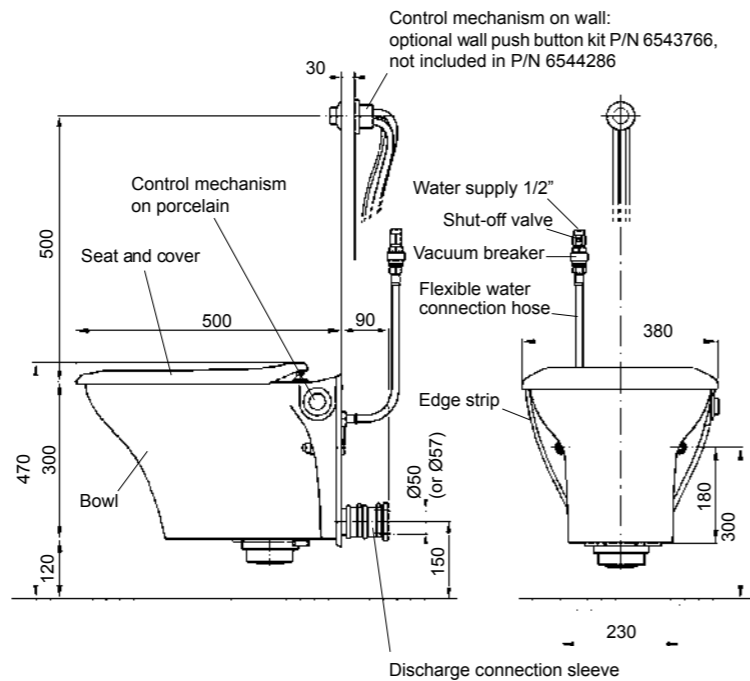
EVAC CLASSIC TOILET - WALL MODEL



**Materials**  
 Bowl: White vitreous china  
 Seat: PP  
 Cover: PP  
 Control mechanism: ABS, POM  
 Discharge valve; plastic parts: POM, PP, rubber parts: NR, EPDM

**Operating data**  
 Water pressure: 300 ...1000kPa  
 Operating vacuum: -30 ... -50kPa  
 Water consumption: ~1.2 ±0.15 litres/flush (water pressure: 400kPa, vacuum: -40kPa)  
 Air consumption: ~60 ±10 litres/flush (normal atmospheric air)

**Connections**  
 Water supply: 1/2" MPT, flexible hose  
 Discharge: Bushing for sleeve coupling (O.D. 48 - 52mm) with two hose calmps and forrubber connector (55 - 60mm pipe) with two hose clamps.



Code	Product
MM EVA 6544286	EVAC CLASSIC TOILET, WALL MODEL, WHITE (CONTROL MECHANISM ON PORCELAIN)
MM EVA 6543766	WALL PUSH BUTTON KIT (OPTIONAL)

**SPARE PARTS AND REPLACEMENT ITEMS AVAILABLE UPON REQUEST**

TECHNICAL ASSISTANCE BY PHONE

+39 335 5785225    +39 339 6709546    +39 0184 573346 press #3



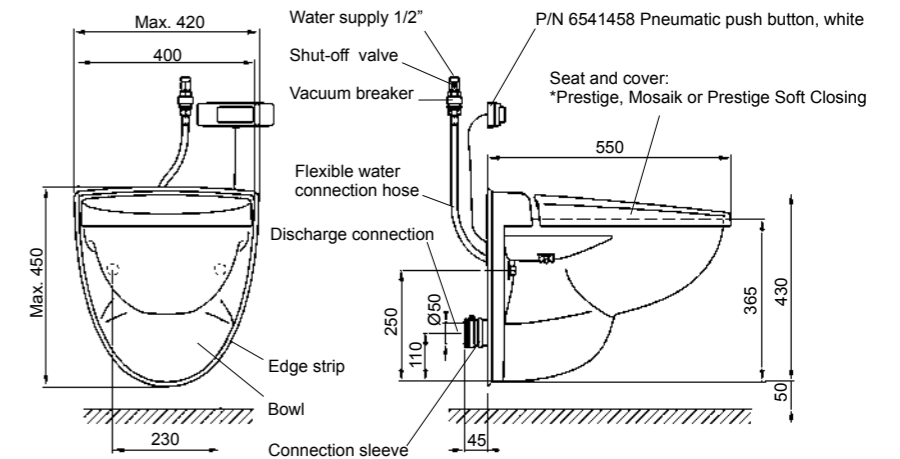
EVAC 910 - WALL MODEL



**Materials**  
 Bowl: White vitreous china\*\*  
 Seat; \*Prestige and Prestige Soft Closing: UF-S\*\*, Mosaik: PP\*\*  
 Cover; \*Prestige and Prestige Soft Closing: UF-S \*\*, Mosaik: PP\*\*  
 Pneumatic push button: White plastic, ABS  
 Discharge valve; plastic parts: PP, rubber parts: NR

**Operating data**  
 Water pressure: 3 - 10 bar  
 Operating vacuum: -0.3 ... - 0.6 bar  
 Water consumption: ~1.2 ±0.15 litres/flush (water pressure: 4 bar, vacuum: -0.4 bar)  
 Air consumption: ~60 ±10 litres/flush (normal atmospheric air)

**Connections**  
 Water supply: 1/2" MPT, flexible hose  
 Discharge: Discharge connection Ø50, connection sleeve includes two hose clamps to O.D. 48 - 52mm pipes



\* Prestige seat and cover fulfill ANSI Z124.5 - 1997 [Plastic Toilet ( Water closet ) Seats] requirements.  
 \*\* See available colours in document 002003-7

Code	Product
MM EVA 6543418	EVAC 910, WALL MODEL, PRESTIGE SILENT, WHITE
MM EVA 6543419	EVAC 910, WALL MODEL, MOSAIK, WHITE
MM EVA 6547226	EVAC 910, WALL MODEL, PRESTIGE SOFT CLOSING, WHITE



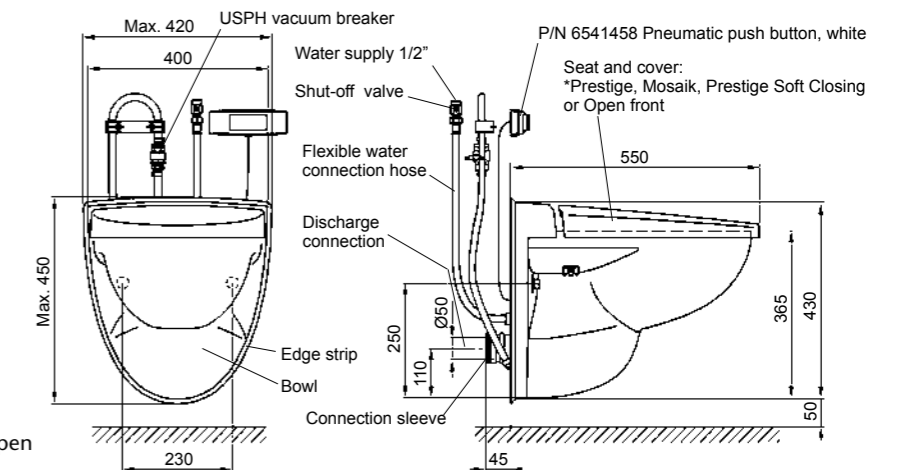
EVAC 910 - WALL MODEL USPH



**Materials**  
 Bowl: White vitreous china\*\*  
 Seat; \*Prestige, Prestige Soft Closing and Open front: UF-S\*\*, Mosaik: PP\*\*  
 Cover; \*Prestige, Prestige Soft Closing and Open Front: UF-S\*\*, Mosaik: PP\*\*  
 Pneumatic push button: White plastic, ABS  
 Discharge valve; plastic parts: PP, rubber parts: NR

**Operating data**  
 Water pressure: 3 - 10 bar  
 Operating vacuum: -0.3 ... - 0.6 bar  
 Water consumption: ~1.2 ±0.15 litres/flush ( water pressure: 4 bar, vacuum: -0.4 bar )  
 Air consumption: ~ 60 ±10 litres/flush (normal atmospheric air)

**Connections**  
 Water supply with USPH: 1/2" MPT, flexible hose  
 Discharge: Discharge connection Ø50, connection sleeve includes two hose clampsto O.D. 48 - 52mm pipes

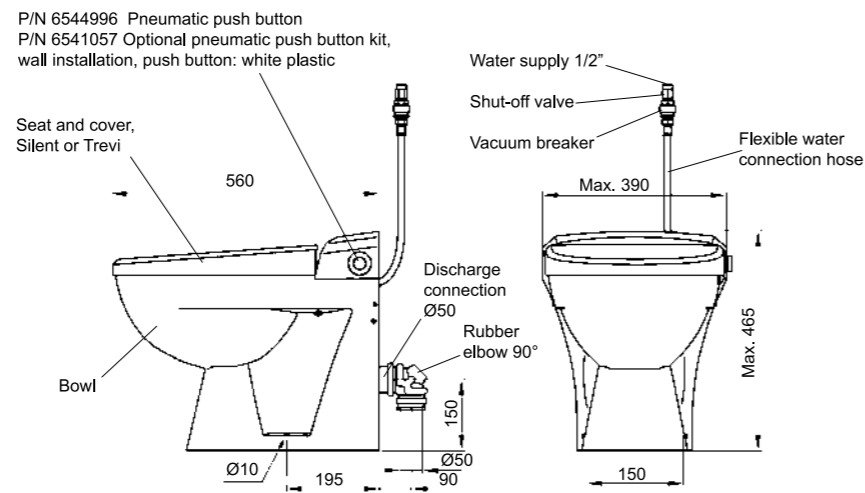


\* Prestige seat and cover fulfill ANSI Z124.5 - 1997 [Plastic Toilet ( Water closet ) Seats] requirements.  
 \*\* See available colours on document 002003-7.

Code	Product
MM EVA 6543420	EVAC 910, WALL MODEL USPH, PRESTIGE SILENT, WHITE
MM EVA 6543421	EVAC 910, WALL MODEL USPH, MOSAIK, WHITE
MM EVA 6544766	EVAC 910, WALL MODEL USPH, OPEN FRONT, WHITE
MM EVA 6547227	EVAC 910, WALL MODEL USPH, PRESTIGE SOFT CLOSING



**EVAC 910 - FLOOR MODEL**



\* See available colours in document 002003-7

**Materials**  
 Bowl: White vitreous china \*  
 Seat; Silent: PP\*, Trevi: PP  
 Cover; Silent: PP\*, Trevi: PP  
 Pneumatic push button: Plastic  
 Discharge valve: Plastic parts: PP, rubber parts: NR

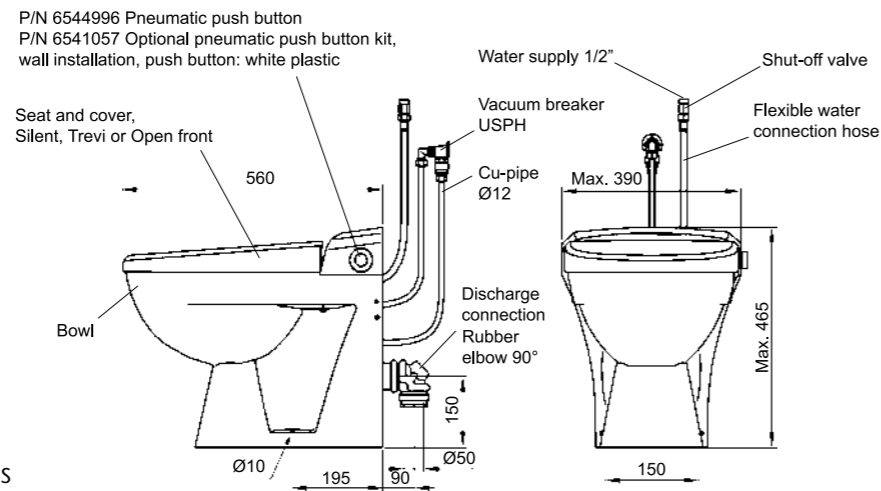
**Operating data**  
 Water pressure: 3 ...10 bar  
 Operating vacuum: -0.3 ... -0.5 bar  
 Water consumption: ~1.2 ±0.15 litres/flush  
 (water pressure: 4 bar, vacuum: -0.4 bar)  
 Air consumption: ~ 60 ±10 litres/flush (normal atmospheric air)

**Connections**  
 Water supply: 1/2" MPT, flexible hose  
 Discharge: Rubber elbow 90°, two hose clamps are included in the rubber elbow 90° to O.D. 48 - 52mm pipe.

Code	Product
MM EVA 6545825	EVAC 910, FLOOR MODEL, SILENT (EVACINHUSH), WHITE
MM EVA 6545826	EVAC 910, FLOOR MODEL, TREVI, WHITE



**EVAC 910 - FLOOR MODEL USPH**



\* See available colours on document 002003-7

**Materials**  
 Bowl: White vitreous china\*  
 Seat; Silent: PP\*, Trevi: PP, Open front: UF-S  
 Cover; Silent: PP\*, Trevi: PP, Open front: UF-S  
 Pneumatic push button: Plastic  
 Discharge valve: Plastic parts: PP, rubber parts: NR

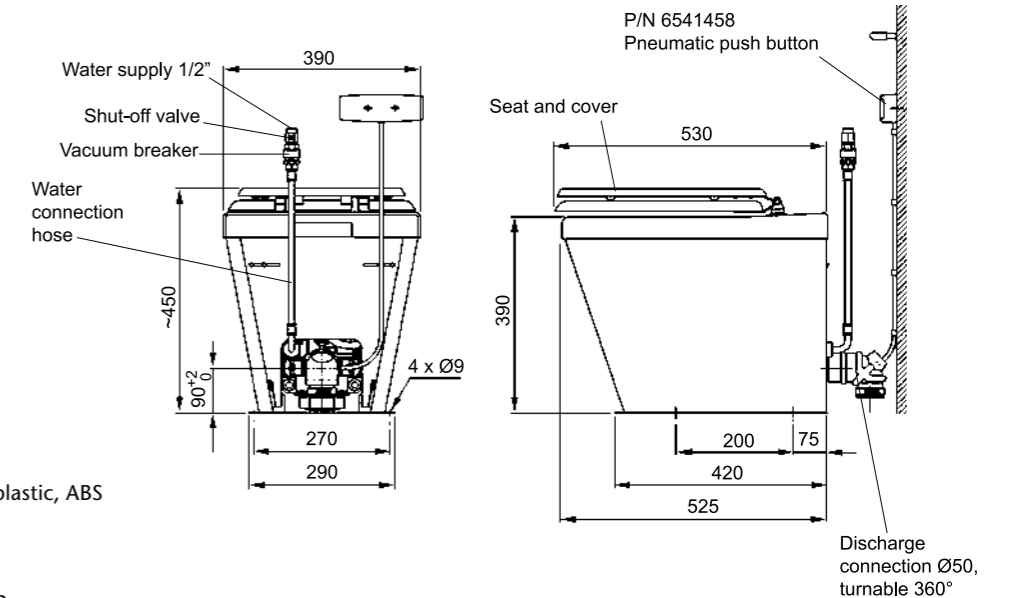
**Operating data**  
 Water pressure: 3 ... 10 bar  
 Operating vacuum: -0.3 ... -0.50 bar  
 Water consumption: 1.2 ±0.15 litres/flush  
 (water pressure: 4 bar, vacuum: -0.4 bar)  
 Air consumption: 60 ±10 litres/flush (normal atmospheric air)

**Connections**  
 Water supply: 1/2" MPT, flexible hose  
 Discharge: Rubber elbow 90°, two hose clamps are included in the rubber elbow 90° to O.D. 48-52mm pipe.

Code	Product
MM EVA 6545827	EVAC 910, FLOOR MODEL USPH, SILENT (EVACINHUSH), WHITE
MM EVA 6545828	EVAC 910, FLOOR MODEL USPH, TREVI, WHITE
MM EVA 6545829	EVAC 910, FLOOR MODEL USPH, OPEN FRONT, WHITE



**EVAC 910 - STAINLESS STEEL**



**Materials**  
 Bowl: Stainless steel EN 1.4404  
 Seat: UF-S  
 Cover: UF-S  
 Pneumatic push button: White plastic, ABS

**Operating data**  
 Water pressure: 200 ...1000kPa  
 Operating vacuum: -30 ... -50kPa  
 Water consumption: 1.2 ±0.15 litres/flush, ( water pressure: 400kPa, vacuum: -40kPa )  
 Air consumption: 60 ±10 litres/flush (normal atmospheric air)

**Connections**  
 Water supply: 1/2" MPT  
 Discharge: 90o rubber elbow to pipe size 48...52mm O.D.

Code	Product
MM EVA 6545960	EVAC 910, STAINLESS STEEL MODEL



**CHARM WALL MOUNTED TOILET**



Charm by Jets™ is a wall mounted vacuum toilet in a simple, contemporary design. It features nozzle flushing with no inside edge, making it very easy to keep clean.

- Low water consumption
- Reliable operation
- VPC controller removes easily for service

Code	Product
MM JET CHARMWM	JETS TOILET MODEL CHARM WALL MOUNTED

**Detailed specs:**

- External dimensions\*: 355 x 520 x 370 mm (W x L x H)
- Bowl material: Vitreous china
- Bowl net weight: 19 kg
- Total weight: 22,5 kg
- Water connection: BSP 1/2" male ball valve
- Discharge outlet: 50 mm external diameter

\* Allow for a deviation of +/- 2% in vitreous china products

**Operating data:**

- Flushing time: adjustable (5 seconds)
- Discharge time: adjustable (2 seconds)
- Water pressure: 2-7 bar (200-700 kPa)
- Operating vacuum: 30-50%
- Water consumption: adjustable (1,2 litres)
- Air consumption: adjustable (approx. 60 litres at 50% vacuum)



Download our App and access the marine catalogues from your mobile device!



**JETS™ 50M**

Jets™ 50M is a floor mounted vacuum toilet in a modern design. It can be supplied with a vacuum operated or electronically operated mechanism.

- Low water consumption
- Reliable operation

Code	Product
MM JET 50M	JETS TOILET MODEL 50M FLOOR MOUNTED

**Detailed specs:**

- External dimensions\*: 385 x 590 x 465 mm (W x L x H)
- Bowl material: Vitreous china
- Bowl net weight: 19,5 kg
- Total weight: 24 kg
- Water connection: BSP 1/2" male ball valve
- Discharge outlet: 50 mm external diameter

\* Allow for a deviation of +/- 2% in vitreous china products

**Operating data:**

- Flushing time: adjustable (5 seconds)
- Discharge time: adjustable (2 seconds)
- Water pressure: 2-7 bar (200-700 kPa)
- Operating vacuum: 30-55%
- Water consumption: adjustable (1,2 litres)
- Air consumption: adjustable (appr. 60 litres at 50% vacuum)

**JETS™ 59M**

Jets™ 59M is a wall mounted vacuum toilet in a modern design. It can be supplied with a vacuum operated or electronically operated mechanism.

- Low water consumption
- Reliable operation

Code	Product
MM JET 59M	JETS TOILET MODEL 59M WALL MOUNTED

**Detailed specs:**

- External dimensions\*: 388 x 542 x 415 mm (W x L x H)
- Bowl material: Vitreous china
- Bowl net weight: 18 kg
- Total weight: 21 kg
- Water connection: BSP 1/2" male ball valve
- Discharge outlet: 50 mm external diameter

\* Allow for a deviation of +/- 2% in vitreous china products

**Operating data:**

- Flushing time: adjustable (5 seconds)
- Discharge time: adjustable (2 seconds)
- Water pressure: 2-7 bar (200-700 kPa)
- Operating vacuum: 30-55%
- Water consumption: adjustable (1,2 litres)
- Air consumption: adjustable (appr. 60 litres at 50% vacuum)

**JETS™ 610**

Jets™ 610 is a floor mounted stainless steel toilet for demanding applications. It can be supplied with a vacuum operated or electronically operated mechanism.

- Low water consumption
- Reliable operation
- Stainless steel

Code	Product
MM JET 610	JETS TOILET MODEL 610 FLOOR MOUNTED

**Detailed specs:**

- External dimensions: 365 x 665 x 400 mm (W x L x H)
- Bowl material: Stainless steel
- Bowl net weight: 14 kg
- Total weight: 19 kg
- Water connection: BSP 1/2" male ball valve
- Discharge outlet: 50 mm external diameter

**Operating data:**

- Flushing time: adjustable (5 seconds)
- Discharge time: adjustable (2 seconds)
- Water pressure: 2-7 bar (200-700 kPa)
- Operating vacuum: 30-50%
- Water consumption: adjustable (1,2 litres)
- Air consumption: adjustable (appr. 60 litres at 50% vacuum)