

ADAPTERS & NOZZLES



ULTIMATE HOSE NOZZLE

- Heavy duty - withstands abuse
- Fire hose nozzle construction
- Adjustable spray pattern for all jobs
- Turns any standard garden hose into multi-function spray tool
- Patented two-way shutoff
- Comfort-grip soft rubber
- Fiberglass reinforced nylon
- Aircraft aluminum
- Stainless steel
- The perfect stream of water for any job



	Code	Description
	MM BON HN10ALBLUE	Aluminum Hose Nozzle-BLUE
	MM BON HN10ALGREEN	Aluminum Hose Nozzle-GREEN
	MM BON HN10ALRED	Aluminum Hose Nozzle-RED
	MM BON HN10C	Stainless Steel Hose Nozzle













FIND THE NEW PRODUCTS ON LINE
www.mansuetomarine.it





 <p>Threaded Tap Connector For 16.7 mm (G 3/8) taps with 21 mm (G 1/2) threads. MM GAR 900</p>	 <p>Threaded Tap Connector For 21 mm (G 1/2) taps with 26.5 mm (G 3/4) threads. MM GAR 901</p>	 <p>Threaded Tap Connector For 26.5 mm (G 3/4) taps with 33.3 mm (G 1) threads. MM GAR 902</p>
 <p>Water Stop For 13 mm (1/2") hoses. MM GAR 913</p>	 <p>Water Stop For 19 mm (3/4") and 16 mm (5/8") hoses. MM GAR 914</p>	 <p>Quick Connector For 13 mm (1/2") hoses. MM GAR 915</p>
 <p>Quick Hose Connector For 19mm (3/4") and 16mm (5/8") hoses. MM GAR 916</p>	 <p>Threaded Hose Connector With 26.5 mm (G 3/4) male thread. MM GAR 917</p>	 <p>Accessory Adapter For European 26.5 mm (G 3/4) female thread. MM GAR 921</p>
 <p>Extension Joint. For hose extensions or changing from 19 mm (3/4") to 13 mm (1/2") hoses. MM GAR 931</p>	 <p>Hose Repairer For 13 mm (1/2") hoses. MM GAR 932</p>	 <p>Hose Repairer For 19 mm (3/4") and 16 mm (5/8") hoses. MM GAR 933</p>
 <p>3-way Y Coupling. Divides your water source in two, for adapting 19 mm (3/4") to 13 mm (1/2") hoses. MM GAR 934</p>	 <p>Twin-Tap Connector. For 21 mm (G 1/2) taps with 26.5 mm (G 3/4) threads. 2 fully adjustable outlets. MM GAR 938</p>	 <p>Twin-Tap Connector. For 26.5 mm (G 3/4) taps with 33.3 mm (G 1) threads. 2 fully adjustable outlets. MM GAR 940</p>
 <p>Hose Connector with Control Valve For 13mm (1/2") hoses. MM GAR 942</p>	 <p>Hose Connector with Control Valve For 19 mm (3/4") and for 16 mm (5/8") hoses. MM GAR 943</p>	 <p>Coupling with Flow-control Valve MM GAR 976</p>
 <p>Regulator Valve MM GAR 977</p>	 <p>Bubble-Jet Adapter MM GAR 2905</p>	 <p>Universal Adapter 13.2 mm (G 1/4) thread. MM GAR 2920</p>
 <p>Comfort Adjustable Spray Nozzle Plus MM GAR 2041</p>	 <p>Comfort Spray Gun Nozzle MM GAR 8100</p>	



 <p>Premium Metal Spray Gun Nozzle MM GAR 8101</p>	 <p>Classic Adjustable Spray Gun Nozzle MM GAR 8115</p>	 <p>Classic Adjustable Spray Gun Nozzle with Flow Control MM GAR 8117</p>	 <p>Premium Adjustable Spray Nozzle MM GAR 8153</p>
 <p>Profi Maxi-Flow System Multi-Purpose Spray Lance MM GAR 2849</p>	 <p>Comfort Adjustable Multi-Purpose Spray Gun with flow control MM GAR 8106</p>	 <p>Classic Adjustable Multifunctional Sprayer with Flow Control + Hose Connector 915 MM GAR 8122</p>	 <p>Soaker Hose Connection Set Complete fittings for inlet and outlet ends of the soaker hose: connection unit with control valve and water stop. MM GAR 1989</p>
 <p>Premium 3-Pattern Garden Hose Watering Wand MM GAR 8155</p>	 <p>Classic Fine Spray Lance Length 75cm MM GAR 8123</p>	 <p>Classic Dual Pattern Hanging Basket Watering Garden Spray Wand MM GAR 1936</p>	 <p>Professional Wall Mount Swivel Automatic Retractable Hose Reel. MM GAR 2656</p>

Most of Gardena products can also be delivered in blister packs.

Gardena offers a wide range of products: hose connectors, garden hoses, hose reels and sprayers, sprinklers, water control systems. Please inquire at info@mansuetomarine.it for more info, quotes and orders.

ALL OUR PRODUCTS ARE DISTRIBUTED IN EVERY **CAPTAIN MARINE STORE**

www.captainmarine.it
Find your nearest CMS



CAMLOCK COUPLINGS

VR CAMLOCK QUICK COUPLINGS FEATURES

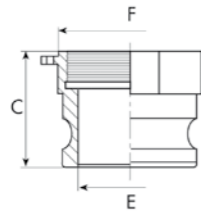
MATERIALS	SIZES	THREADS	PRESSURES	TEMPERATURE
<ul style="list-style-type: none"> Aluminium Bronze Brass Polypropylene Carbon steel S/S AISI 304 – 304L – 316 – 316L Hastelloy Monel Inconel 	1/2" – 8"	<ul style="list-style-type: none"> BSPP BSPT NPT UNI Other on request 	<ul style="list-style-type: none"> Up to 2": 40 kg/cm2 and vacuum 3" to 4": 20 kg/cm2 and vacuum 5" to 6": 8 kg/cm2 vacuum 8": 6 kg/cm2 and vacuum 	According to gasket type: <ul style="list-style-type: none"> BUNA DUTRAL VITON PTFE FEP



TYPE A MALE QUICK ADAPTOR



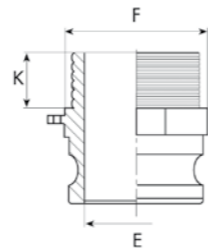
Male adaptor, female thread
BSPP (cylindrical)
BSPT (conical)
NPT



TYPE F MALE QUICK ADAPTOR



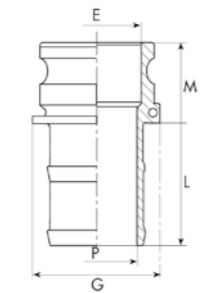
Male adaptor, male thread
BSPP (cylindrical)
BSPT (conical)
NPT



TYPE E MALE QUICK ADAPTOR



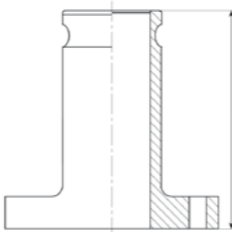
Male adaptor, male hosebarb
Standard diameters
Special diameters available on request



TYPE LAS MALE QUICK ADAPTOR



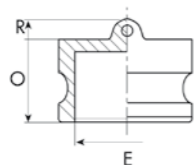
Flanged adaptor
UNI Flanged
ANSI Flanged



TYPE P MALE QUICK ADAPTOR



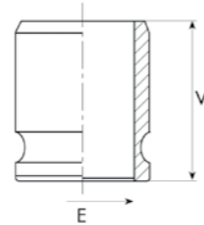
Dust plug



TYPE AW MALE QUICK ADAPTOR



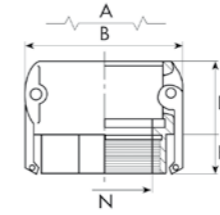
Butt weld adaptor



TYPE D FEMALE QUICK COUPLING



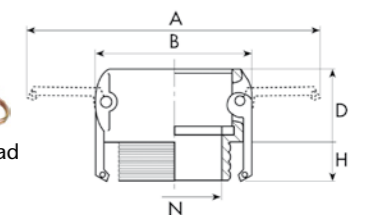
Female coupling, female thread
BSPP (cylindrical)
BSPT (conical)
NPT



TYPE B FEMALE QUICK COUPLING



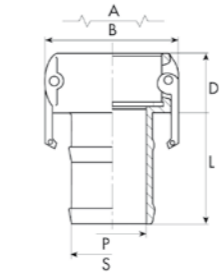
Female coupling, male thread
BSPP (cylindrical)
BSPT (conical)
NPT



TYPE C FEMALE QUICK COUPLING



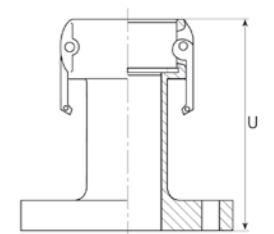
Female coupling, male hosebarb
Standard diameters
Special diameters available on request



TYPE LBS FEMALE QUICK COUPLING



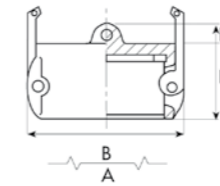
Flanged coupler
UNI Flanged
ANSI Flanged



TYPE L FEMALE QUICK COUPLING



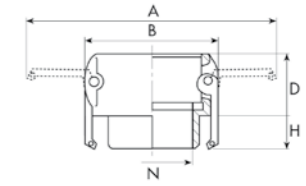
Dust cap



TYPE DW FEMALE QUICK COUPLING



Butt weld coupler



DIMENSIONS CHART (mm)																				
Size	A	B	C	D	E	F	G	H	I	K	L	M	N	O	P	R	S	T	U	V
1/2"	117	62	40	32	15	32	34	18	40	18	43	28	15	28	10	8	16	65	82	40
3/4"	117	62	40	32	19	34	34	18	40	18	51	33	20	28	14	8	21	67	84	40
1"	137	66	48	40	24	40	40	24	48	20	57	44	24	36	20	10	26	75	94	48
1 1/4"	184	82	56	50	28	46	50	24	56	22	58	52	30	42	25	10	34	92	122	56
1 1/2"	191	92	56	50	36	55	57	24	56	24	61	54	40	47	32	10	42	92	124	56
2"	200	99	62	54	46	70	72	26	63	24	71	58	50	53	42	11	52	94	124	62
2 1/2"	213	126	74	56	58	83	86	32	69	26	81	61	60	53	56	11	68	98	124	74
3"	254	138	74	58	72	98	103	32	71	30	100	66	75	53	66	11	80	106	138	74
4"	279	169	75	60	100	124	130	32	77	30	110	67	90	53	93	11	103	108	138	75
5"	306	198	79	69	120	158	160	32	88	34	125	77	113	59	113	15	130	110	140	79
6"	416	265	89	69	150	197	187	40	88	40	145	78	146	60	141	15	158	134	182	89
8"	514	300	120	102	193	256	235	48	90	45	190	104	193	125	186	15	204	176	222	120

INOX FITTINGS



INOX AISI 316 SEA COCK



Code	Sizes Ø	
	MM MTF 3610	3/8"
1/2"		2"
3/4"		2 ¹ / ₂ "
1"		3"
1 ¹ / ₄ "		

SHUT-OFF FULL FLOW BALL VALVE FEMALE/FEMALE AISI 316 PN 64



Code	Sizes Ø	
	MM MTF 3750	1/4"
3/8"		2"
1/2"		2 ¹ / ₂ "
3/4"		3"
1"		
1 ¹ / ₄ "		

PIPE ELBOW 90° MALE/FEMALE AISI 316



Code	Sizes Ø	
	MM MTF 3092	1/4"
3/8"		2"
1/2"		2 ¹ / ₂ "
3/4"		3"
1"		4"
1 ¹ / ₄ "		

TEE FITTING FEMALE/FEMALE/FEMALE AISI 316



Code	Sizes Ø	
	MM MTF 3130	1/4"
3/8"		2"
1/2"		2 ¹ / ₂ "
3/4"		3"
1"		4"
1 ¹ / ₄ "		

SEA DRAINS AISI 316 MICROFUSION



Code	Sizes Ø	
	MM MTF 3681	3/8"
1/2"		1 ¹ / ₂ "
3/4"		2"
1"		

PIPE ELBOW 90° FEMALE/FEMALE AISI 316



Code	Sizes Ø	
	MM MTF 3090	1/4"
3/8"		2"
1/2"		2 ¹ / ₂ "
3/4"		3"
1"		4"
1 ¹ / ₄ "		

PIPE ELBOW FEMALE/FEMALE 45° AISI 316 AISI 316



Code	Sizes Ø	
	MM MTF 3120	1/2"
3/4"		1 ¹ / ₂ "
1"		2"

REDUCTION MALE/FEMALE AISI 316



Code	Sizes Ø	
	MM MTF 3241	1/4" x 1/8"
3/8" x 1/4"		1 ¹ / ₂ x 1 ¹ / ₄ "
1/2" x 1/4"		2" x 1 ¹ / ₄ "
1/2" x 3/8"		2" x 1 ¹ / ₂ "
3/4" x 3/8"		2 ¹ / ₂ x 1 ¹ / ₂ "
3/4" x 1/2"		2 ¹ / ₂ x 2"
1" x 1/2"		3" x 2"
1" x 3/4"		3" x 2 ¹ / ₂ "
1 ¹ / ₄ x 3/4"		4" x 3"
1 ¹ / ₄ x 1"		



PLUG MALE AISI 316



Code	Sizes Ø	
	MM MTF 3290	1/4"
3/8"		2"
1/2"		2 ¹ / ₂ "
3/4"		3"
1"		4"
1 ¹ / ₄ "		

REDUCED SLEEVE FEMALE/FEMALE AISI 316



Code	Sizes Ø	
	MM MTF 3240	1/4" x 1/8"
3/8" x 1/4"		2" x 1 ¹ / ₂ "
1/2" x 3/8"		3" x 2"
3/4" x 1/2"		3" x 2 ¹ / ₂ "
1" x 3/4"		4" x 3"
1 ¹ / ₄ x 1"		

NIPPLE MALE/MALE AISI 316



Code	Sizes Ø	
	MM MTF 3280	1/4"
3/8"		2"
1/2"		2 ¹ / ₂ "
3/4"		3"
1"		4"
1 ¹ / ₄ "		

CAP FEMALE AISI 316



Code	Sizes Ø	
	MM MTF 3300	1/4"
3/8"		2"
1/2"		2 ¹ / ₂ "
3/4"		3"
1"		4"
1 ¹ / ₃ "		

HOSE CONNECTOR MALE AISI 316



Code	Sizes Ø x Length	
	MM MTF 3400	1/4 x 11mm
3/8 x 12mm		2" x 52mm
1/2 x 14mm		2 ¹ / ₂ x 67mm
3/4 x 21mm		3" x 78mm
1" x 27mm		4" x 105mm
1 ¹ / ₄ x 34mm		

ELBOW PIPE UNION THREADED TAPER SEAT 3 PIECES MALE/FEMALE



Code	Sizes Ø	
	MM MTF 3098	1/2"
3/4"		1 ¹ / ₂ "
1"		2"

DOUBLE NIPPLE REDUCED MALE/MALE AISI 316



Code	Sizes Ø	
	MM MTF 3245	1/4" x 1/8"
3/8" x 1/4"		2" x 1 ¹ / ₂ "
1/2" x 3/8"		2 ¹ / ₂ x 2"
3/4" x 1/2"		3" x 2 ¹ / ₂ "
1" x 3/4"		4" x 3"
1 ¹ / ₄ x 1"		

PIPE UNION THREADED MALE/FEMALE AISI 316



Code	Sizes Ø	
	MM MTF 3341	3/8"
1/2"		2"
3/4"		2 ¹ / ₂ "
1"		3"
1 ¹ / ₄ "		4"

PIPE UNION FEMALE/FEMALE AISI 316



Code	Sizes Ø	
	MM MTF 3340	1/4"
3/8"		2"
1/2"		2 ¹ / ₂ "
3/4"		3"
1"		4"
1 ¹ / ₄ "		

SLEEVE FEMALE/FEMALE AISI 304



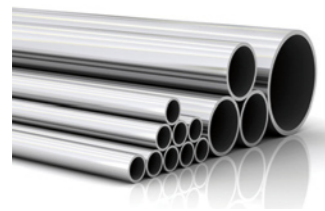
Code	Sizes Ø	
	MM MTF 3103	1/4"
3/8"		2"
1/2"		2 ¹ / ₂ "
3/4"		3"
1"		4"
1 ¹ / ₄ "		

NIPPER AISI 304



Code	Sizes Ø	
	MM MTF 3104	1/4"
3/8"		2"
1/2"		2 ¹ / ₂ "
3/4"		3"
1"		4"
1 ¹ / ₄ "		

ROUND INOX PIPES



AISI 304, 316, 316L, other available.

DIN	GAS	Diameter	Thickness mm							
			1	1,5	2	2,5	3	4	5	
10	3/8"	17,2	■	■	■					
-	-	18	■	■	■					
-	-	20	■	■	■					
15	1/2"	21,3	■	■	■	■	■			
-	-	22	■	■	■					
-	-	25	■	■	■	■	■			
20	3/4"	26,9	■	■	■	■	■			
-	-	28	■	■	■	■	■			
-	-	30	■	■	■	■	■			
-	-	32	■	■	■	■	■			
25	1"	33,7	■	■	■	■	■			
-	-	35	■	■	■	■	■			
-	-	38,1	■	■	■	■	■			
-	-	40	■	■	■	■	■			
32	1 1/4"	42,4		■	■	■	■			
-	-	45		■	■	■	■			
40	1 1/2"	48,3		■	■	■	■			
-	-	50	■	■	■	■	■			
-	-	50,8	■	■	■	■	■			
-	-	52	■	■	■					
-	-	53		■	■					
-	-	54		■	■					
-	-	57		■	■	■	■			
50	2"	60,3		■	■	■	■	■		
-	-	63,5		■	■	■	■	■		
-	-	70		■	■	■	■	■		
65	2 1/2"	76,1		■	■	■	■	■		
-	-	80		■	■	■	■	■		
-	-	83		■	■					
-	-	84		■	■					
-	-	85		■	■					
80	3"	88,9		■	■	■	■	■	■	
-	3 1/2"	101,6		■	■	■	■	■	■	
-	-	103		■	■					
-	-	104		■	■					
-	-	108		■	■		■	■		
100	4"	114,3		■	■	■	■	■	■	
-	-	129		■	■	■	■	■		
125	5"	139,7		■	■	■	■	■		
-	-	153		■	■					
-	-	154		■	■					
-	-	156					■	■		
-	-	159						■		
150	6"	168,3		■	■	■	■	■		
-	-	203		■	■					
-	-	204		■	■					
-	-	206					■	■		
200	8"	219,1			■	■	■	■		
-	-	254			■					
-	-	256			■					
250	10"	273			■	■	■	■		
-	-	304			■					
300	12"	323,9			■		■			
-	-	354			■					
350	14"	355,6					■			
400	16"	406,4					■			

Smaller or bigger diameters and thicker pipes available on request. Please specify pipe length of your need.

BRASS FITTINGS



ELBOW 90° THREADED MALE / FEMALE



Code	Sizes Ø	
	MM MTF 092	1/8"
1/4"		1 1/2"
3/8"		2"
1/2"		2 1/2"
3/4"		3"
1"		4"

ELBOW 90° FEMALE / FEMALE



Code	Sizes Ø	
	MM MTF 090	1/8"
1/4"		1 1/2"
3/8"		2"
1/2"		2 1/2"
3/4"		3"
1"		4"

THREADED ELBOW 90° FEMALE/FEMALE REDUCED



Code	Sizes Ø	
	MM MTF 090R	1/2" x 3/8"
3/4" x 1/2"		1 1/4" x 1"
1" x 1/2"		

PIPE UNION 90° FEMALE/FEMALE



Code	Sizes Ø	
	MM MTF 096	1/2"
3/4"		1 1/2"
1"		2"

PIPE UNION 90° THREADED MALE/FEMALE



Code	Sizes Ø	
	MM MTF 098	1/2"
3/4"		1 1/2"
1"		2"

ELBOW 45° MALE / FEMALE



Code	Sizes Ø	
	MM MTF 121	1/2"
3/4"		1 1/2"
1"		

ELBOW 45° FEMALE / FEMALE



Code	Sizes Ø	
	MM MTF 120	1/8"
1/4"		1 1/4"
3/8"		1 1/2"
1/2"		2"
3/4"		

TEE-FITTING FEMALE/FEMALE/FEMALE



Code	Sizes Ø	
	MM MTF 130	1/8"
1/4"		1 1/2"
3/8"		2"
1/2"		2 1/2"
3/4"		3"
1"	4"	

TEE PIPE CONNECTOR REDUCED FEMALE/FEMALE/FEMALE



Code	Sizes Ø	
	MM MTF 130R	3/4" x 1/2" x 3/4"
1" x 1/2" x 1"		
1" x 3/4" x 1"		

3-WAY CONNECTOR FEMALE



Code	Sizes Ø	
	MM MTF 131	1/2"
3/4"		

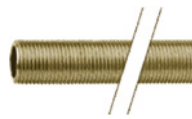


4-WAY TEE CONNECTOR FEMALE



Code	Sizes Ø	
	MM MTF 132	1/2"
3/4"		1 ¹ / ₂ "
1"		

THREADED BAR 1 MT LENGTH



Code	Sizes Ø	
	MM MTF 210	3/8"
1/2"		1 ¹ / ₂ "
3/4"		2"
1"		

REDUCED JOINT FEMALE/FEMALE



Code	Sizes Ø	
	MM MTF 240	1/2" x 3/8"
3/4" x 3/8"		1 ¹ / ₄ x 1"
3/4" x 1/2"		1 ¹ / ₂ x 1"
1" x 3/8"		1 ¹ / ₂ x 1 ¹ / ₄ "
1" x 1/2"		2" x 1 ¹ / ₄ "
1" x 3/4"		2" x 1 ¹ / ₂ "

COUPLING REDUCED MALE/FEMALE



Code	Sizes Ø	
	MM MTF 246	3/8" x 1/8"
3/8" x 1/4"		1 ¹ / ₂ x 1"
1/2" x 3/8"		1 ¹ / ₂ x 1 ¹ / ₄ "
3/4" x 1/2"		2" x 1"
1" x 1/2"		2" x 1 ¹ / ₄ "
1" x 3/4"		2" x 1 ¹ / ₂ "
	1 ¹ / ₄ x 3/4"	

COUPLING FEMALE/FEMALE



Code	Sizes Ø	
	MM MTF 270	1/8"
1/4"		1 ¹ / ₂ "
3/8"		2"
1/2"		2 ¹ / ₂ "
3/4"		3"
1"		4"

CROSS FITTING 4 X FEMALE



Code	Sizes Ø	
	MM MTF 180	1/2"
3/4"		1 ¹ / ₂ "
1"		2"

EXTENSION BAR MALE/MALE



Code	Sizes Ø x Length	
	MM MTF 238	3/8" x 60mm
3/8" x 80mm		1" x 80mm
3/8" x 100mm		1" x 100mm
3/8" x 150mm		1" x 150mm
3/8" x 200mm		1" x 200mm
1/2" x 50mm		1" x 300 mm
1/2" x 60mm		1 ¹ / ₄ x 60mm
1/2" x 80mm		1 ¹ / ₄ x 80mm
1/2" x 100mm		1 ¹ / ₄ x 100mm
1/2" x 150mm		1 ¹ / ₄ x 150mm
1/2" x 200mm		1 ¹ / ₄ x 200mm
1/2" x 300mm		1 ¹ / ₄ x 300mm
3/4" x 60mm		1 ¹ / ₂ x 100mm
3/4" x 80mm		1 ¹ / ₂ x 150mm
3/4" x 100mm		1 ¹ / ₂ x 200mm
3/4" x 150mm		2" x 100mm
3/4" x 200mm		2" x 150mm
3/4" x 300mm		2" x 200mm

Y PIPE CONNECTOR MALE/FEMALE/FEMALE



Code	Sizes Ø
MM MTF 220	1/2"

EXTENSION BAR MALE/FEMALE



Code	Sizes Ø x Length	
	MM MTF 239	3/8" x 10mm
3/8" x 15mm		3/4" x 15mm
3/8" x 20mm		3/4" x 20mm
3/8" x 30mm		3/4" x 30mm
3/8" x 40mm		3/4" x 40mm
3/8" x 50mm		3/4" x 50mm
1/2" x 10mm		1" x 10mm
1/2" x 15mm		1" x 15mm
1/2" x 20mm		1" x 20mm
1/2" x 30mm		1" x 30mm
1/2" x 40mm		1" x 40mm
1/2" x 50mm		1" x 50mm

REDUCTION FITTING WITH EXAGON
MALE/FEMALE

Code	Sizes Ø	
	MM MTF 241	1/8" x 1/4"
3/8" x 1/8"		1 ¹ / ₂ x 1"
3/8" x 1/4"		1 ¹ / ₂ x 1 ¹ / ₄ "
1/2" x 1/8"		2" x 1"
1/2" x 1/4"		2" x 1 ¹ / ₄ "
1/2" x 3/8"		2" x 1 ¹ / ₂ "
3/4" x 1/4"		2 ¹ / ₂ x 1"
3/4" x 3/8"		2 ¹ / ₂ x 1 ¹ / ₄ "
3/4" x 1/2"		2 ¹ / ₂ x 1 ¹ / ₂ "
1" x 3/8"		2 ¹ / ₂ x 2"
1" x 1/2"		3" x 1 ¹ / ₂ "
1" x 3/4"		3" x 2"
1 ¹ / ₄ x 1/2"		3" x 2 ¹ / ₂ "
1 ¹ / ₄ x 3/4"		4" x 2"
1 ¹ / ₄ x 1"		4" x 2 ¹ / ₂ "
1 ¹ / ₂ x 1/2"	4" x 3"	

REDUCING RING



Code	Sizes Ø	
	MM MTF 242	3/8" x 1/4"
1/2" x 3/8"		1 ¹ / ₄ x 1"
3/4" x 1/2"		1 ¹ / ₂ x 1 ¹ / ₄ "

DOUBLE NIPPLE MALE/MALE



Code	Sizes Ø	
	MM MTF 280	1/8"
1/4"		1 ¹ / ₂ "
3/8"		2"
1/2"		2 ¹ / ₂ "
3/4"		3"
	1"	4"

CAP MALE, SQUARE HEAD



Code	Sizes Ø	
	MM MTF 290	1/8"
1/4"		1 ¹ / ₂ "
3/8"		2"
1/2"		2 ¹ / ₂ "
3/4"		3"
1"		4"

DOUBLE NIPPLE REDUCED MALE/FEMALE



Code	Sizes Ø	
	MM MTF 245	1/8" x 1/4"
3/8" x 1/8"		1 ¹ / ₄ x 1"
3/8" x 1/4"		1 ¹ / ₂ x 1/2"
1/2" x 1/8"		1 ¹ / ₂ x 3/4"
1/2" x 1/4"		1 ¹ / ₂ x 1"
1/2" x 3/8"		1 ¹ / ₂ x 1 ¹ / ₄ "
3/4" x 1/8"		2" x 3/4"
3/4" x 1/4"		2" x 1"
3/4" x 3/8"		2" x 1 ¹ / ₄ "
3/4" x 1/2"		2" x 1 ¹ / ₂ "
1" x 1/4"		2 ¹ / ₂ x 1 ¹ / ₄ "
1" x 3/8"		2 ¹ / ₂ x 1 ¹ / ₂ "
1" x 1/2"		2 ¹ / ₂ x 2"
1" x 3/4"		3" x 2"
1 ¹ / ₄ x 1/2"	3" x 2 ¹ / ₂ "	

WELD PIPE COUPLING MALE



Code	Sizes Ø x Length	
	MM MTF 283	3/4" x 22mm
3/4" x 28mm		1 ¹ / ₂ x 42mm
1" x 28mm		2" x 54mm
1 ¹ / ₄ x 35mm		

PLUG MALE WITH HEXAGON



Code	Sizes Ø	
	MM MTF 292	1/4"
3/8"		1 ¹ / ₄ "
1/2"		1 ¹ / ₂ "
3/4"		2"

FEMALE PLUG



Code	Sizes Ø	
	MM MTF 300	1/8"
1/4"		1 ¹ / ₂ "
3/8"		2"
1/2"		2 ¹ / ₂ "
3/4"		3"
	1"	4"



LOCK NUT



Code	Sizes Ø	
	1/8"	1"
MM MTF 310	1/4"	1 1/4"
	3/8"	1 1/2"
	1/2"	2"
	3/4"	

PIPE UNION CONIC SECTION THREADED MALE/FEMALE



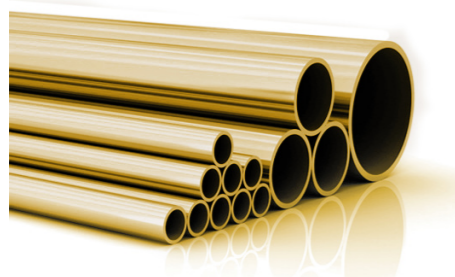
Code	Sizes Ø	
	1/2"	1 1/2"
MM MTF 341	3/4"	2"
	1"	2 1/2"
	1 1/4"	2"

PIPE UNION WITH O-RING THREADED MALE/FEMALE



Code	Sizes Ø	
	3/8"	1 1/4"
MM MTF 338	1/2"	1 1/2"
	3/4"	2"
	1"	

ROUND BRASS PIPES



Thickness mm					
0,5	1	1,5	2	2,5	5
Int. Ø x Ext. Ø	Int. Ø x Ext. Ø	Int. Ø x Ext. Ø	Int. Ø x Ext. Ø	Int. Ø x Ext. Ø	Int. Ø x Ext. Ø
From 1x2 To 49x50	From 1x3 To 98x100	From 3x6 To 97x100	From 4x8 To 96x100	From 5x10 To 195x200	From 10x20 To 190x20

Please ask for size of your interest and specify pipe length of your need.

PVC FITTINGS - PN16 - RINA APPROVED



90° ELBOW 2 THREADED SOCKETS



Code	Sizes Ø	
	3/8"	1 1/4"
MM FIP GFV MM MTF GOF	1/2"	1 1/2"
	3/4"	2"
	1"	

DOUBLE THREADED SOCKET



Code	Sizes Ø	
	3/8"	1 1/4"
MM FIP MFV MM MTF MAF	1/2"	1 1/2"
	3/4"	2"
	1"	

SOCKET UNION, THREADED SOCKETS



Code	Sizes Ø	
	3/8"	1 1/4"
MM FIP BFV MM MTF BOF	1/2"	1 1/2"
	3/4"	2"
	1"	

HOSE ADAPTOR, THREADED MALE ENDS



Code	Sizes Ø	
	3/8" x 16mm	1 1/4" x 40mm
MM FIP AFV MM MTF PGF	1/2" x 20mm	1 1/2" x 50mm
	3/4" x 25mm	2" x 60mm
	1" x 30mm	

SLEEVE FEMALE/FEMALE FOR GLUING



Code	Sizes Ø	
	16mm	40mm
MM FIP MIV MM MTF MAI	20mm	50mm
	25mm	63mm
	32mm	

END CAP, THREADED SOCKET



Code	Sizes Ø	
	3/8"	1 1/4"
MM FIP CFV MM MTF CAF	1/2"	1 1/2"
	3/4"	2"
	1"	

45° ELBOW 2 THREADED SOCKETS



Code	Sizes Ø	
	3/8"	1 1/4"
MM FIP HFV MM MTF GYF	1/2"	1 1/2"
	3/4"	2"
	1"	

90° TEE FITTING, THREADED SOCKETS



Code	Sizes Ø	
	3/8"	1 1/4"
MM FIP TFV MM MTF TIF	1/2"	1 1/2"
	3/4"	2"
	1"	

90° ELBOW FEMALE/FEMALE FOR GLUING



Code	Sizes Ø	
	16mm	40mm
MM FIP GIV MM MTF GOI	20mm	50mm
	25mm	63mm
	32mm	

END CAP FOR GLUING



Code	Sizes Ø	
	16mm	40mm
MM FIP CIV MM MTF CAI	20mm	50mm
	25mm	63mm
	32mm	



REDUCING BUSHING MALE/FEMALE FOR GLUING



Code	Sizes Ø	
	MM FIP DIV MM MTF RCI	20 x 16mm
25 x 16mm		50 x 32mm
25 x 20mm		50 x 40mm
32 x 20mm		63 x 40mm
32 x 25mm		63 x 50mm
	40 x 25mm	

REDUCER FEMALE/FEMALE FOR GLUING



Code	Sizes Ø	
	MM FIP RIV MM MTF MRI	20 x 16mm
25 x 20mm		50 x 40mm
32 x 25mm		63 x 50mm

45° ELBOW FEMALE/FEMALE FOR GLUING



Code	Sizes Ø	
	MM FIP HIV MM MTF GYI	16mm
20mm		50mm
25mm		63mm
32mm		

SOCKET UNION FEMALE/FEMALE FOR GLUING



Code	Sizes Ø	
	MM FIP BIV MM MTF BOI	16mm
20mm		50mm
25mm		63mm
32mm		

TEE 90° EQUAL FITTING FEMALE/FEMALE/FEMALE FOR GLUING



Code	Sizes Ø	
	MM FIP TIV MM MTF TII	16mm
20mm		50mm
25mm		63mm
32mm		

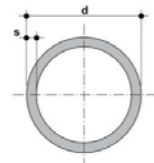
HOSE ADAPTOR MALE END FOR GLUING



Code	Sizes Ø	
	MM FIP AIV MM MTF PGI	16x18x16
20x22x20		50x52x50
25x27x25		63x64x63
32x30x32		

Other PN, sizes and further fittings available on request.
Adaptor Series Fittings (welding/gluing end + threaded end) also available.

ROUND PVC PRESSURE PIPES – PN 16



Code	d mm	DN
MM FIP PIPEC13016	16	10
MM FIP PIPEC13020	20	15
MM FIP PIPEC13025	25	20
MM FIP PIPEC13032	32	25
MM FIP PIPEC13040	40	32
MM FIP PIPEC13050	50	40
MM FIP PIPEC13063	63	50
MM FIP PIPEC13075	75	65
MM FIP PIPEC13090	90	80
MM FIP PIPEC130110	110	100
MM FIP PIPEC130160	160*	150

Please specify pipe length of your need.

* PN 10

ACCESSORIES

HENKEL Tangit PVC-U

Code: MM BNZ TG125 / 250 / 500 / 100

Special adhesive for bonding PVC fittings and pressure pipes

Packaging:
125gr tubes 250ml and 1lt tins
250gr, 500gr and 1kg tins



Brush for glue application



O-ring seal



SABA 914

Code: MM SAB 629974 / 634008

Brushable adhesive for bonding PVC rigid piping
PVC rigid piping

Packaging:
250ml and 1lt tins



Teflon tape roll for threaded PVC fittings and pipes



NBR O-ring set

Code: MM ABC L3756/9000

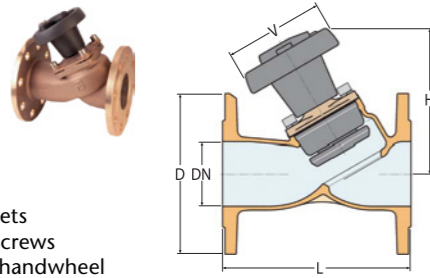
382 o-rings of different thicknesses and diameters
Plastic box 240x175x45mm



We deliver ALL OVER EUROPE
MORE THAN 1.000.000 articles on stock
WITH OUR OWN MEANS OF TRANSPORT
24/7 Express DELIVERY to the Mediterranean

VALVES

SAFETY INTAKE "NON-STICK" VALVE - FLANGED VERSION - CAST BRONZE - PN6 - PN16 - FULL FLOW

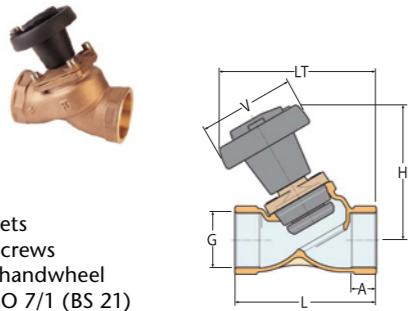


- Bronze body
- Neoprene gaskets
- Stainless steel screws
- Thermoplastic handwheel

Code	Weight (gr)	V	H	L	D*	DN
MM GDI 2200	10600	125	178	218	185	65
	12000	125	181	235	200	80
	16500	160	222	270	220	100
						125

*Flange PN16

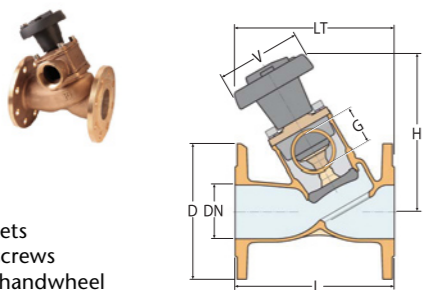
SAFETY INTAKE "NON-STICK" VALVE - F-F THREADED VERSION - CAST BRONZE - FULL FLOW



- Bronze body
 - Neoprene gaskets
 - Stainless steel screws
 - Thermoplastic handwheel
- THREAD : G = ISO 7/1 (BS 21)

Code	Weight (gr)	LT	V	H	L	A	G
MM GDI 2210	1350	132	80	122	104	19.1	1"
	1450	135	80	124	112	21.4	1 1/4"
	2200	159	100	142	126	21.4	1 1/2"
	2650	164	100	142	148	25.7	2"
	5300	215	125	180	195	30.2	2 1/2"
	6200	216	125	185	206	33.3	3"
	9500	256	160	213	245	35.8	4"

SAFETY DOUBLE INTAKE "NON-STICK" VALVE - FLANGED VERSION - CAST BRONZE - PN6 - PN16 - FULL FLOW

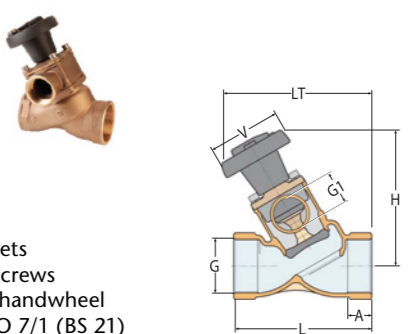


- Bronze body
- Neoprene gaskets
- Stainless steel screws
- Thermoplastic handwheel

Code	Weight (gr)	LT	V	H	L	D*	G	DN
MM GDI 2240	12800	232	125	231	218	185	1 1/2"	65
	14100	236	125	234	235	200	2"	80
	20000	287	160	283	270	220	2 1/2"	100
								125

*Flange PN16

SAFETY DOUBLE INTAKE "NON-STICK" VALVE - F-F THREADED VERSION - CAST BRONZE - FULL FLOW

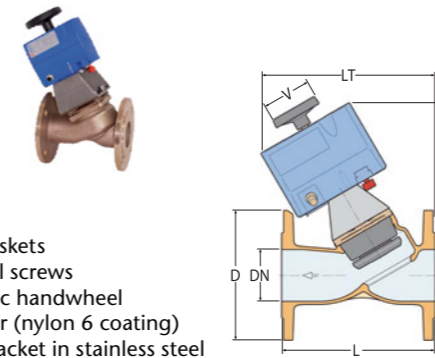


- Bronze body
 - Neoprene gaskets
 - Stainless steel screws
 - Thermoplastic handwheel
- THREAD : G = ISO 7/1 (BS 21)

Code	Weight (gr)	LT	V	H	L	A	G1	G
MM GDI 2250	7400	244	125	233	195	30.2	1 1/2"	2 1/2"
	8250	246	125	236	206	33.3	2"	3"
	13000	291	160	274	245	35.8	2 1/2"	4"

MANSUETO MARINE

SAFETY INTAKE VALVE - FLANGED VERSION - WITH ELECTRIC ACTUATOR - CAST BRONZE - PN16 - PN6 - FULL FLOW

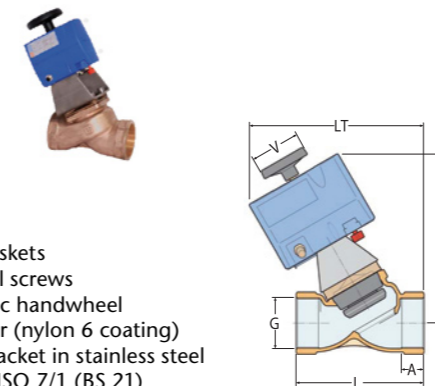


- Bronze body
- Neoprene gaskets
- Stainless steel screws
- Thermoplastic handwheel
- Electric motor (nylon 6 coating)
- Mounting bracket in stainless steel

Code	Weight (gr)	V	H	LT	L	D*	DN
MM GDI 2200AE	13100	80	281	268	218	185	65
	14500	80	281	271	235	200	80
	19000	80	309	300	270	220	100

*Flange PN16

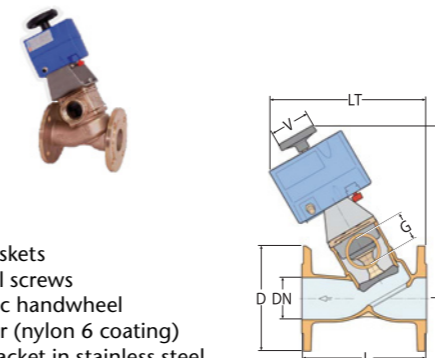
SAFETY INTAKE VALVE - F-F THREADED VERSION - WITH ELECTRIC ACTUATOR - CAST BRONZE - FULL FLOW



- Bronze body
 - Neoprene gaskets
 - Stainless steel screws
 - Thermoplastic handwheel
 - Electric motor (nylon 6 coating)
 - Mounting bracket in stainless steel
- THREAD : G = ISO 7/1 (BS 21)

Code	Weight (gr)	LT	V	H	L	A	G
MM GDI 2210AE	3850	213	80	232	104	19.1	1"
	3950	217	80	234	112	21.4	1 1/4"
	4700	241	80	259	128	21.4	1 1/2"
	5150	241	80	259	148	25.7	2"
	7800	274	80	281	190	30.2	2 1/2"
	8700	275	80	281	202	33.3	3"
	12000	308	80	309	245	35.8	4"

SAFETY DOUBLE INTAKE VALVE - FLANGED VERSION - WITH ELECTRIC ACTUATOR - CAST BRONZE - PN16 - PN6 - FULL FLOW

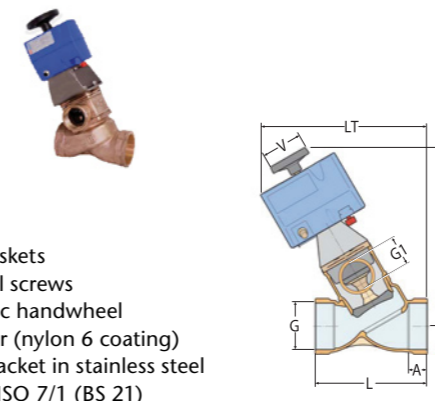


- Bronze body
- Neoprene gaskets
- Stainless steel screws
- Thermoplastic handwheel
- Electric motor (nylon 6 coating)
- Mounting bracket in stainless steel

Code	Weight (gr)	LT	V	H	L	D*	G	DN
MM GDI 2240AE	15300	298	80	334	218	185	1 1/2"	65
	16600	302	80	337	235	200	2"	80
	22500	338	80	378	270	220	2 1/2"	100

*Flange PN16

SAFETY DOUBLE INTAKE VALVE - F-F THREADED VERSION - WITH ELECTRIC ACTUATOR - CAST BRONZE - FULL FLOW

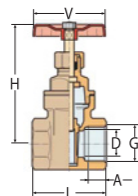


- Bronze body
 - Neoprene gaskets
 - Stainless steel screws
 - Thermoplastic handwheel
 - Electric motor (nylon 6 coating)
 - Mounting bracket in stainless steel
- THREAD : G = ISO 7/1 (BS 21)

Code	Weight (gr)	LT	V	H	L	A	G1	G
MM GDI 2250AE	9900	304	80	234	190	30.2	1 1/2"	2 1/2"
	10750	306	80	237	202	33.3	2"	3"
	15500	347	80	278	245	35.8	2 1/2"	4"

www.mansuetomarine.it

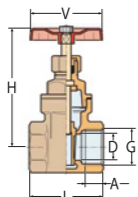
NORMAL SERIES GATE VALVE - BRASS



THREAD :
G = ISO 228/1 (BS 2779)

Code	Weight (gr)	V	H	L	D	A	G
MM GDI 1521	170	45	67	33	11	8	1/4"
	155	45	67	33	13	8	3/8"
	180	45	68	38	15	9	1/2"
	260	50	78	44	19	10	3/4"
	360	55	91	48	24	11	1"
	500	60	108	51	32	12	1 1/4"
	665	70	125	58	37	13	1 1/2"
	1040	80	143	63	47	13	2"
	1620	100	175	64	60	13	2 1/2"
	2200	100	200	74	72	14	3"
3600	120	235	84	93	16	4"	

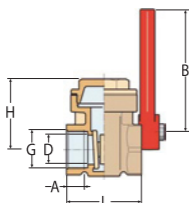
NORMAL SERIES GATE VALVE - BRONZE



THREAD :
G = ISO 228/1 (BS 2779)

Code	Weight (gr)	V	H	L	D	A	G
MM GDI 1522	165	45	66	36	11	8	1/4"
	170	45	66	38	13	9	3/8"
	190	45	68	38	15	9	1/2"
	280	50	78	45	19	10	3/4"
	370	55	92	48	24	11	1"
	565	60	108	51	32	11	1 1/4"
	805	70	125	58	37	13	1 1/2"
	1195	80	145	62	47	13	2"
	2055	100	175	76	60	16	2 1/2"
	2710	100	200	80	72	16	3"
	4660	120	240	96	93	19	4"
	10000	140	300	112	117	20	5"

QUICK-CLOSING GATE VALVE - BRONZE



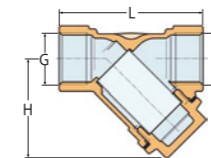
THREAD :
G = ISO 228/1 (BS 2779)

Code	Weight (gr)	B	H	L	D	A	G
MM GDI 1525	370	80	40	44	15	11	3/8"
	370	80	40	46	15	13	1/2"
	560	100	48	51	20	14	3/4"
	770	100	55	57	25	16	1"
	1000	120	62	61	32	17	1 1/4"
	1420	136	68	67	37	19	1 1/2"
	1900	165	81	77	47	20	2"
	3400	205	108	86	58	20	2 1/2"
	4300	205	121	91	72	21	3"
	7540	255	148	102	92	24	4"

Large assortment of certified quality STAINLESS STEEL ball valves, flanges and fittings also available

Valves can be customised and assembled with different connections.
Please send your inquiry to technical@mansuetomarine.it

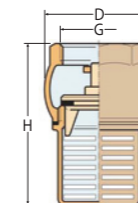
45° FILTER - BRASS



THREAD :
G = ISO 228/1 (BS 2779)

Code	Weight (gr)	H	L	G
MM GDI 1504	150	40	55	1/4"
	130	40	55	3/8"
	140	40	58	1/2"
	220	50	70	3/4"
	420	60	87	1"
	605	68	96	1 1/4"
	830	75	106	1 1/2"
	1330	90	126	2"

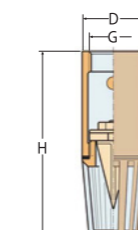
RUBBER GASKET FOOT-VALVE - BRASS



THREAD :
G = ISO 228/1 (BS 2779)

Code	Weight (gr)	H	D	G
MM GDI 1530	200	70	45	3/4"
	300	82	51	1"
	505	95	62	1 1/4"
	595	103	69	1 1/2"
	910	121	80	2"
	1500	137	100	2 1/2"
	2120	173	121	3"
	3580	199	145	4"
	6135	239	180	5"
	9400	267	201	6"

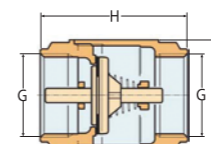
TUBULAR RUBBER GASKET FOOT-VALVE - BRASS



THREAD :
G = ISO 228/1 (BS 2779)

Code	Weight (gr)	H	D	G
MM GDI 1531	150	85	29	1/2"
	200	95	30	3/4"
	280	111	37	1"
	400	126	46	1 1/4"
	600	140	52	1 1/2"
	865	164	63	2"

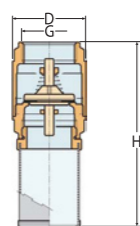
SPRING CHECK VALVE "EUROPA" TYPE - BRASS



THREAD :
G = ISO 228/1 (BS 2779)

Code	Weight (gr)	H	D	G
MM GDI 1532	90	45	29	1/4"
	75	45	29	3/8"
	100	48	30	1/2"
	155	53	37	3/4"
	225	59	44	1"
	350	66	56	1 1/4"
	470	71	63	1 1/2"
	710	80	78	2"
	1260	93	103	2 1/2"
	1810	104	120	3"
	3100	119	155	4"

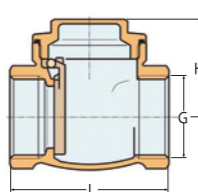
SPRING CHECK VALVE "EUROPA" TYPE WITH STAINLESS STEEL FILTER - BRASS



Code	Weight (gr)	H	D	G
MM GDI 1533	95	88	29	3/8"
	125	91	30	1/2"
	190	102	37	3/4"
	285	113	44	1"
	415	125	56	1 1/4"
	550	140	63	1 1/2"
	860	164	78	2"
	1510	177	103	2 1/2"
	2180	193	120	3"
3550	234	155	4"	

THREAD :
G = ISO 228/1 (BS 2779)

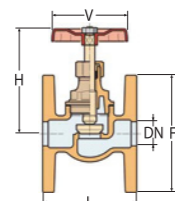
SWING CHECK VALVE - METAL TIGHTNESS - BRASS



Code	Weight (gr)	H	L	G
MM GDI 1670	170	32	47	3/8"
	145	32	47	1/2"
	210	35	54	3/4"
	335	39	64	1"
	485	47	76	1 1/4"
	650	51	83	1 1/2"
	1000	59	98	2"
	1555	67	116	2 1/2"
	2240	77	135	3"
	3795	92	164	4"
	10500	118	206	5"
	15860	134	235	6"

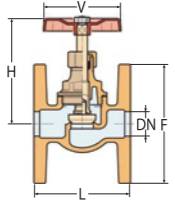
THREAD :
G = ISO 228/1 (BS 2779)

"GLOBE" VALVE - METAL TIGHTNESS PN16 - BRONZE



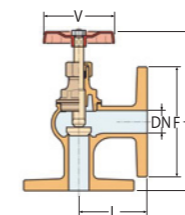
Code	Weight (gr)	V	H	L	F	DN
MM GDI 1630	1350	60	80	70	95	15
	2000	60	92	80	105	20
	2500	70	108	99	115	25
	3800	70	120	108	140	32
	4600	80	132	130	150	40
	6400	90	155	147	165	50
	10500	125	220	190	185	65
	18500	150	260	220	200	80

"GLOBE" VALVE - METAL TIGHTNESS - WITH SEMI-AUTOMATIC CLOSING - PN16 - BRONZE



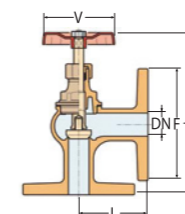
Code	Weight (gr)	V	H	L	F	DN
MM GDI 1630A	1350	60	80	70	95	15
	2000	60	92	80	105	20
	2500	70	108	99	115	25
	3800	70	120	108	140	32
	4600	80	132	130	150	40
	6400	90	155	147	165	50
	10500	125	220	190	185	65
	13000	150	235	207	200	80
	18500	150	260	220	220	100

ANGLE VALVE - METAL TIGHTNESS - PN16 - BRONZE



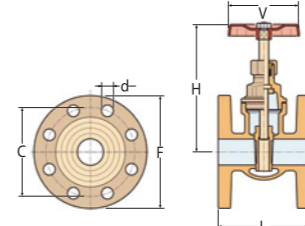
Code	Weight (gr)	V	H	L	F	DN
MM GDI 1650	1800	60	74	60	95	15
	2150	60	83	65	105	20
	3100	70	104	72	115	25
	4500	70	110	85	140	32
	5200	80	143	90	150	40
	7500	90	160	105	165	50
	10700	125	187	110	185	65
	12800	150	225	115	200	80
	16000	150	220	140	220	100

ANGLE VALVE METAL TIGHTNESS - WITH SEMI-AUTOMATIC CLOSING - PN16 - BRONZE



Code	Weight (gr)	V	H	L	F	DN
MM GDI 1650A	1800	60	74	60	95	15
	2150	60	83	65	105	20
	3100	70	104	72	115	25
	4500	70	110	85	140	32
	5200	80	143	90	150	40
	7500	90	160	105	165	50
	10700	125	187	110	185	65
	12800	150	225	115	200	80
	16000	150	220	140	220	100

FLANGED GATE VALVE - PN6 / PN16 - BRONZE



Code	Weight (gr)	No. holes	d	C	F	V	H	L	D	DN
MM GDI 1660	950	4	11	55	80	55	75	65	20	15
	1270	4	11	65	90	55	87	80	20	20
	1640	4	11	75	100	60	95	85	25	25
	2440	4	14	90	120	70	117	100	29	32
	3500	4	14	100	130	70	132	110	36	40
	4350	4	14	110	140	80	152	125	47	50
	6800	4	14	130	160	110	184	140	58	65
	9320	4	18	150	190	120	220	150	72	80
	14000	4	18	170	210	140	252	170	93	100
	20840	8	18	200	240	175	312	200	119	125
	30200	8	18	225	265	200	370	210	145	150

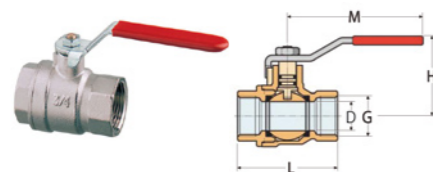
PN 6

Code	Weight (gr)	No. holes	d	C	F	V	H	L	D	DN
MM GDI 1660	1200	4	14	65	95	55	75	65	20	15
	1780	4	14	75	105	55	87	80	20	20
	2020	4	14	85	115	60	95	85	25	25
	3400	4	18	100	140	70	117	100	29	32
	4200	4	18	110	150	70	132	110	36	40
	5600	4	18	125	165	80	152	125	47	50
	7400	4	18	145	185	110	184	140	58	65
	10000	8	18	160	200	120	220	150	72	80
	14700	8	18	180	220	140	252	170	93	100
	22100	8	18	210	250	175	312	200	119	125
	31000	8	22	240	285	200	370	210	145	150

PN 16

+39 335 5785225 +39 339 6709546 +39 0184 573346 press #3

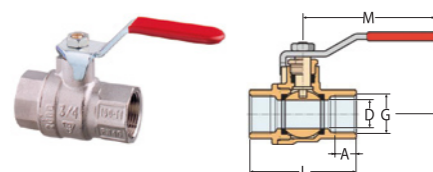
LEVER OPERATED BALL VALVE - F-F FULL FLOW - PN25 - NICKEL-PLATED BRASS



Code	Weight (gr)	M	H	L	D	G
MM GDI 1560	135	80	41	45	10	1/4"
	120	80	41	45	10	3/8"
	180	80	43	50	15	1/2"
	260	90	46	59	20	3/4"
	460	90	60	70	25	1"
	740	115	64	81	32	1 1/4"
	990	125	74	91	40	1 1/2"
	1550	150	82	108	50	2"
	2880	240	120	130	61	2 1/2"
	4000	240	127	150	74	3"
7000	250	135	178	95	4"	

THREAD :
G = ISO 228/1 (BS 2779)

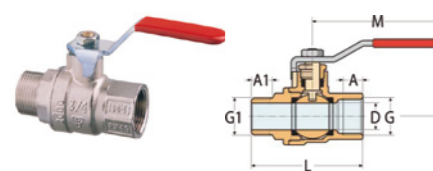
LEVER OPERATED BALL VALVE - F-F FULL FLOW - PN40 - NICKEL-PLATED BRASS



Code	Weight (gr)	M	H	L	D	A	G
MM GDI 1570	135	80	41	45	10	10	1/4"
	120	80	41	45	10	10	3/8"
	255	90	54	63	15	15	1/2"
	340	90	58	71	20	16	3/4"
	610	125	66	83	25	19	1"
	910	125	71	92	32	21	1 1/4"
	1280	140	80	104	40	21	1 1/2"
	1940	140	88	124	50	26	2"
	4050	250	131	140	61	27	2 1/2"
	5430	250	140	159	74	28	3"
	8750	250	156	195	95	35	4"

THREAD :
G = ISO 228/1 (BS 2779)

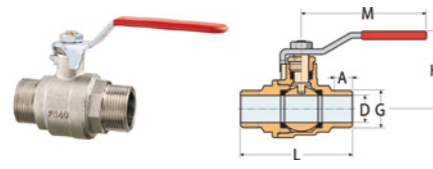
LEVER OPERATED BALL VALVE - M-F FULL FLOW - PN40 - NICKEL-PLATED BRASS



Code	Weight (gr)	M	H	L	D	A-1	G-1
MM GDI 1571	115	80	41	42	10	10	1/4"
	130	80	41	54	10	10	3/8"
	265	90	54	70	15	15	1/2"
	365	90	58	80	20	16	3/4"
	645	125	66	92	25	19	1"
	995	125	71	102	32	21	1 1/4"
	1370	140	80	117	40	21	1 1/2"
	2060	140	88	137	50	26	2"

THREAD :
G-1 = ISO 228/1 (BS 2779)

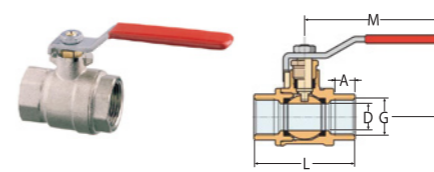
LEVER OPERATED BALL VALVE - M-M FULL FLOW - PN40 - NICKEL-PLATED BRASS



Code	Weight (gr)	M	H	L	D	A	G
MM GDI 1572	125	80	41	54	10	10	3/8"
	210	90	54	68	15	15	1/2"
	350	90	58	77	20	16	3/4"
	650	125	66	92	25	19	1"

THREAD :
G = ISO 228/1 (BS 2779)

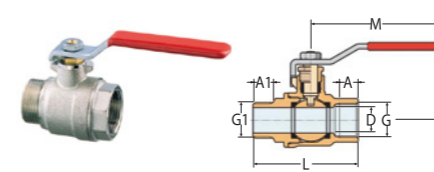
LEVER OPERATED BALL VALVE - F-F FULL FLOW - PN30 - NICKEL-PLATED BRASS



Code	Weight (gr)	M	H	L	D	A	G
MM GDI 1575	145	77	41	44	10	12	1/4"
	130	77	41	44	10	12	3/8"
	200	100	46	50	15	12	1/2"
	280	100	49	58	20	13	3/4"
	440	120	62	68	25	15	1"
	670	120	67	80	32	17	1 1/4"
	1150	157	85	93	40	19	1 1/2"
	1870	157	92	110	50	21	2"
	3000	230	120	134	63	23	2 1/2"
	4100	230	128	151	74	25	3"
6500	230	142	180	94	29	4"	

THREAD :
G = ISO 228/1 (BS 2779)

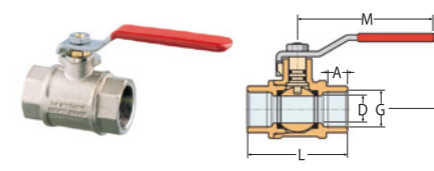
LEVER OPERATED BALL VALVE - M-F FULL FLOW - PN30 - NICKEL-PLATED BRASS



Code	Weight (gr)	M	H	L	D	A-1	G-1
MM GDI 1576	128	77	41	44	10	12	1/4"
	126	77	41	44	10	12	3/8"
	192	100	46	50	15	12	1/2"
	270	100	49	58	20	13	3/4"
	440	120	62	68	25	15	1"
	660	120	67	80	32	17	1 1/4"
	910	157	85	93	40	19	1 1/2"
	1770	157	92	110	50	21	2"

THREAD :
G-1 = ISO 228/1 (BS 2779)

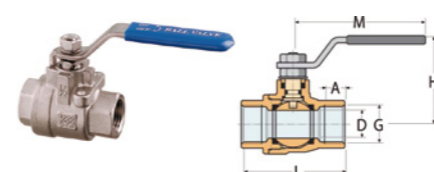
LEVER OPERATED BALL VALVE F-F - FULL FLOW - PN40 - NICKEL-PLATED BRASS



Code	Weight (gr)	M	H	L	D	A	G
MM GDI 1577	145	77	41	44	10	12	1/4"
	130	77	41	44	10	12	3/8"
	236	100	46	58	15	16	1/2"
	343	100	49	66	20	17	3/4"
	545	120	62	76	25	19.1	1"
	830	120	67	89	32	21.4	1 1/4"
	1350	157	85	101	40	21.4	1 1/2"
	2320	157	92	119	50	25.7	2"

THREAD :
G = ISO 7/1 (BS 21)

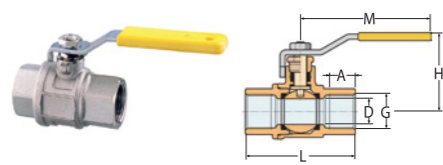
BALL VALVE F-F - FULL FLOW - STAINLESS STEEL



Code	PN	Weight (gr)	M	H	L	D	A	G
MM GDI 1815	100	220	110	52	50	8	11.4	1/4"
	100	205	110	52	50	10	11.4	3/8"
	100	275	110	55	60	15	15	1/2"
	64	465	140	66	70	20	16.3	3/4"
	64	710	140	70	85	25	19.1	1"
	40	1180	180	85	95	32	21.4	1 1/4"
	40	1740	180	91	105	40	21.4	1 1/2"
	40	2930	230	105	125	50	25.7	2"
	40	6200	270	140	162	65	32.5	2 1/2"
	40	9000	270	148	178	80	32.5	3"

THREAD :
G = ISO 7/1 (BS 21)

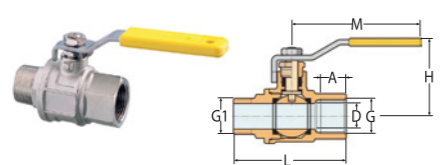
LEVER OPERATED BALL VALVE F-F - FULL FLOW - PN40 - "2000" SERIES - NICKEL-PLATED BRASS



THREAD :
G = ISO 7/1 (BS 21)

Code	Weight (gr)	M	H	L	D	A	G
MM GDI 1850	150	95	42	46	10	10	1/4"
	180	95	42	52	10	11.4	3/8"
	280	95	46	66	15	15	1/2"
MM GDI 1851 (version with stainless steel lever)	465	115	55	76	20	16.3	3/4"
	750	115	60	90	25	19.1	1"
	1375	155	77	110	32	21.4	1 1/4"
	2050	155	78	120	40	21.4	1 1/2"
	3500	175	100	140	50	25.7	2"
5250	232	110	164	65	30.1	2 1/2"	

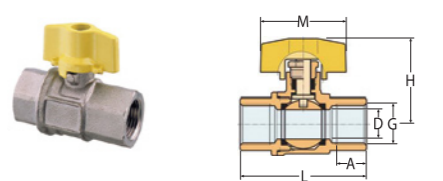
LEVER OPERATED BALL VALVE M-F - FULL FLOW - PN40 - "2000" SERIES - NICKEL-PLATED BRASS



THREAD :
G-G1 = ISO 7/1 (BS 21)

Code	Weight (gr)	M	H	L	D	A	G-G1
MM GDI 1855	135	95	42	50	10	10	1/4"
	150	95	42	58	10	11.4	3/8"
	250	95	46	71	15	15	1/2"
MM GDI 1856 (version with stainless steel lever)	400	115	55	81	20	16.3	3/4"
	700	115	60	94	25	19.1	1"
	1100	155	77	112	32	21.4	1 1/4"
	1800	155	78	123	40	21.4	1 1/2"
	3000	175	100	144	50	25.7	2"
4900	232	110	168	65	30.1	2 1/2"	

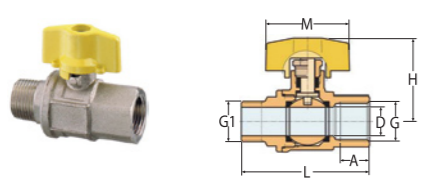
THROTTLE OPERATED BALL VALVE F-F - FULL FLOW - PN40 - "2000" SERIES - NICKEL-PLATED BRASS



THREAD :
G = ISO 7/1 (BS 21)

Code	Weight (gr)	M	H	L	D	A	G
MM GDI 1870	175	45	42	46	10	10	1/4"
	190	45	42	52	10	11.4	3/8"
	300	45	46	66	15	15	1/2"
	500	65	55	76	20	16.3	3/4"
	790	65	60	90	25	19.1	1"

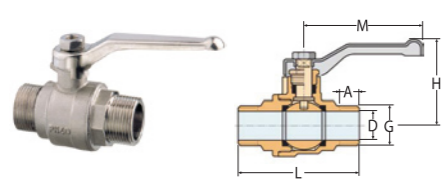
THROTTLE OPERATED BALL VALVE M-F - FULL FLOW - PN40 - "2000" SERIES - NICKEL-PLATED BRASS



THREAD :
G-G1 = ISO 7/1 (BS 21)

Code	Weight (gr)	M	H	L	D	A	G-G1
MM GDI 1875	170	45	42	50	10	10	1/4"
	190	45	42	58	10	11.4	3/8"
	290	45	46	71	15	15	1/2"
	485	65	55	81	20	16.3	3/4"
	780	65	60	94	25	19.1	1"

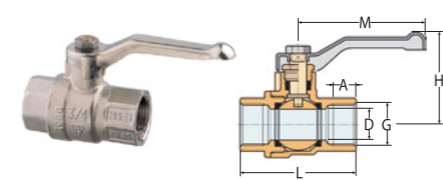
LEVER OPERATED BALL VALVE M-M - FULL FLOW - PN40 - NICKEL-PLATED BRASS



THREAD :
G = ISO 228/1 (BS 2779)

Code	Weight (gr)	M	H	L	D	A	G
MM GDI 2072	120	80	32	54	10	16	1/2"
	210	92	50	68	15	17	3/4"
	350	92	53	77	20	21	1"
	640	115	63	92	25	23	1 1/4"

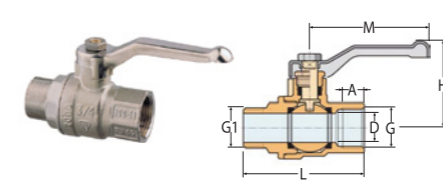
LEVER OPERATED BALL VALVE F-F - FULL FLOW - PN40 - NICKEL-PLATED BRASS



THREAD :
G = ISO 228/1 (BS 2779)

Code	Weight (gr)	M	H	L	D	A	G
MM GDI 2070	130	80	32	45	10	10	1/4"
	115	80	32	45	10	10	3/8"
	255	92	50	63	15	15	1/2"
	340	92	53	71	20	16	3/4"
	600	115	63	83	25	19	1"
	900	115	67	92	32	21	1 1/4"
	1320	150	82	104	40	21	1 1/2"
	1980	150	90	124	50	26	2"

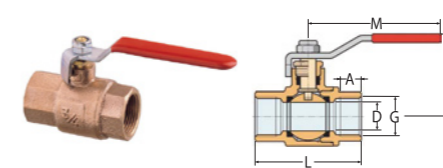
LEVER OPERATED BALL VALVE M-F - FULL FLOW - PN40 - NICKEL-PLATED BRASS



THREAD :
G-G1 = ISO 228/1 (BS 2779)

Code	Weight (gr)	M	H	L	D	A	G-G1
MM GDI 2071	125	80	32	54	10	10	3/8"
	265	92	50	70	15	15	1/2"
	365	92	53	80	20	16	3/4"
	635	115	63	92	25	19	1"
	985	115	67	102	32	21	1 1/4"
	1410	150	82	117	40	21	1 1/2"
	2100	150	90	137	50	26	2"

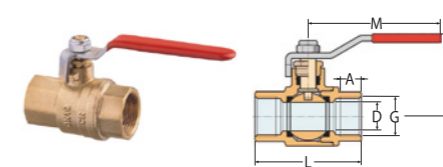
LEVER OPERATED BALL VALVE F-F FULL FLOW PN32 - BRONZE



THREAD :
G = ISO 7/1 (BS 21)

Code	Weight (gr)	M	H	L	D	A	G
MM GDI 2080 MM GDI 2081 (version with stainless steel lever)	210	85	45	51	12	10	1/4"
	185	85	45	51	12	12	3/8"
	270	85	45	62	15	15	1/2"
	380	104	55	70	19	16.3	3/4"
	625	104	57	85	25	19.1	1"
	985	122	75	99	32	21.4	1 1/4"
	1300	122	80	110	40	21.4	1 1/2"
	2480	153	98	134	50	25.7	2"
	3670	200	120	142	60	26	2 1/2"
	6540	280	144	178	76	30	3"
10000	280	165	210	95	31	4"	

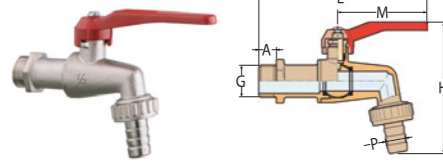
LEVER OPERATED BALL VALVE F-F - FULL FLOW - PN32 - DZR BRONZE



THREAD :
G = ISO 7/1 (BS 21)

Code	Weight (gr)	M	H	L	D	A	G
MM GDI 2090	220	85	45	62	15	16	1/2"
	320	104	55	70	19	17	3/4"
	525	104	57	85	25	21	1"
	930	122	75	99	32	23	1 1/4"
	1380	122	80	110	40	24	1 1/2"
	2500	153	98	134	50	28	2"

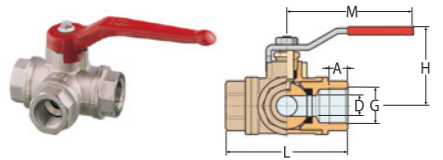
BALL BIBCOCK WITH HOSE CONNECTION - PN10 - NICKEL-PLATED BRASS



Code	Weight (gr)	H	L	M	P	A	G
MM GDI 1555	190	92	145	90	14	11	3/8"
	245	90	145	90	14	11	1/2"
	375	98	155	90	20	15	3/4"
	575	120	170	115	25	17	1"

THREAD :
G = ISO 228/1 (BS 2779)

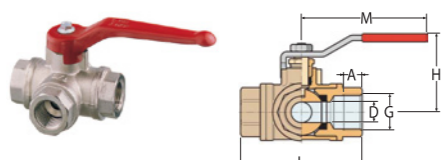
THREE WAYS BALL VALVE F-F-F - PN32 - "T" FLOW - NICKEL-PLATED BRASS



Code	Weight (gr)	M	H	L	D	A	G
MM GDI 1551	450	90	56	74	10	12	1/4"
	420	90	56	74	10	12	3/8"
	650	125	62	80	12	14	1/2"
	860	125	66	90	15	16	3/4"
	1490	140	73	105	20	19	1"
	1790	140	76	115	25	21	1 1/4"
	3610	220	97	138	32	23	1 1/2"
	5200	220	104	161	40	26	2"

THREAD :
G = ISO 228/1 (BS 2779)

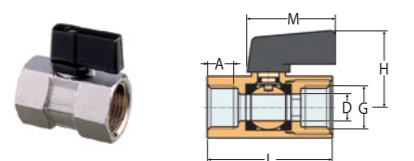
THREE WAYS BALL VALVE F-F-F - PN40 - "L" FLOW - NICKEL-PLATED BRASS



Code	Weight (gr)	M	H	L	D	A	G
MM GDI 1552	450	90	56	74	10	12	1/4"
	420	90	56	74	10	12	3/8"
	660	125	62	80	12	14	1/2"
	870	125	66	90	15	16	3/4"
	1510	140	73	105	20	19	1"
	1840	140	76	115	25	21	1 1/4"
	3650	220	97	138	32	23	1 1/2"
	5170	220	104	161	40	26	2"

THREAD :
G = ISO 228/1 (BS 2779)

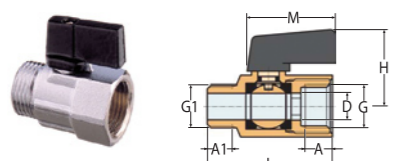
BALL VALVE "MINI" F-F - PN10 - NICKEL-PLATED BRASS



Code	Weight (gr)	M	H	L	D	A	G
MM GDI 1595	90	34	28	41	7.5	10	1/4"
	85	34	28	41	7.5	10	3/8"
	115	34	31	45	9.5	10	1/2"

THREAD :
G = ISO 228/1 (BS 2779)

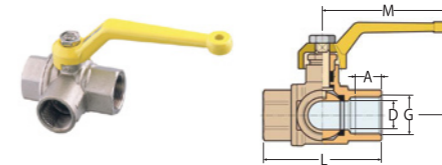
BALL VALVE "MINI" M-F - PN10 - NICKEL-PLATED BRASS



Code	Weight (gr)	M	H	L	D	A1	A	G-G1
MM GDI 1596	70	34	28	41	7.5	8	10	1/4"
	80	34	28	41	7.5	10	10	3/8"
	100	34	31	45	9.5	10	10	1/2"

THREAD :
G-G1 = ISO 228/1 (BS 2779)

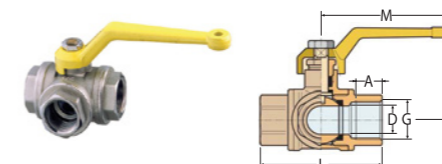
FULL FLOW 3 WAYS DIVERTER VALVE - "L" FLOW - F-F-F - PN16 - NICKEL-PLATED BRASS



Code	Weight (gr)	M	H	L	D	A	G
MM GDI 1905	175	110	48	46	10	10	1/4"
	190	110	48	52	10	11.4	3/8"
	300	110	50	66	15	15	1/2"
	550	130	62.5	76	20	16.3	3/4"
	850	130	67	90	25	19.1	1"
	1450	159	82	110	32	21.4	1 1/4"
	2100	159	88.5	120	40	21.4	1 1/2"
	3520	188	109	140	50	25.7	2"
	6600	190	120	160	65	35	2 1/2"

THREAD :
G = ISO 7/1 (BS 21)

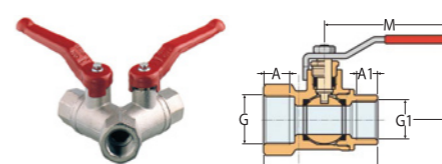
THREE WAYS BALL VALVE - "T" FLOW - F-F-F - PN16 - NICKEL-PLATED BRASS



Code	Weight (gr)	M	H	L	D	A	G
MM GDI 1920	190	110	48	52	10	10	1/4"
	215	110	48	52	10	11.4	3/8"
	380	110	50	66	13	15	1/2"
	630	130	63	76	17.5	16.3	3/4"
	1100	130	67	93	22	19.1	1"
	1840	159	82	108	28	21.4	1 1/4"
	3200	159	89	126	35	21.4	1 1/2"
	5100	188	109	146	44	25.7	2"

THREAD :
G = ISO 7/1 (BS 21)

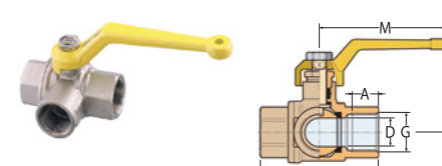
LEVER OPERATED BALL VALVE F-F-F - WITH DOUBLE OUTLET - NICKEL-PLATED BRASS



Code	Weight (gr)	M	H	A-A1	G1	G
MM GDI 1585	620	90	54	15	3/8"x3/8"	1/2"
	570	90	54	15	1/2"x1/2"	3/4"
	910	125	58	16	3/4"x3/4"	1"
	860	125	58	16	1"x1"	1 1/4"

THREAD :
G-G1 = ISO 228/1 (BS 2779)

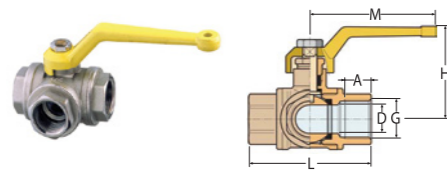
FULL FLOW 3 WAYS DIVERTER VALVE - "T" FLOW - F-F-F - PN16 - NICKEL-PLATED BRASS



Code	Weight (gr)	M	H	L	D	A	G
MM GDI 1900	170	110	48	46	10	10	1/4"
	185	110	48	52	10	11.4	3/8"
	290	110	50	66	15	15	1/2"
	480	130	62.5	76	20	16.3	3/4"
	780	130	67	90	25	19.1	1"
	1320	159	82	110	32	21.4	1 1/4"
	1920	159	88.5	120	40	21.4	1 1/2"
	3100	188	109	140	50	25.7	2"
	6600	190	120	160	65	35	2 1/2"

THREAD :
G = ISO 7/1 (BS 21)

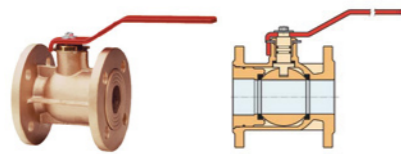
THREE WAYS BALL VALVE - "L" FLOW - F-F-F - PN16 - NICKEL-PLATED BRASS



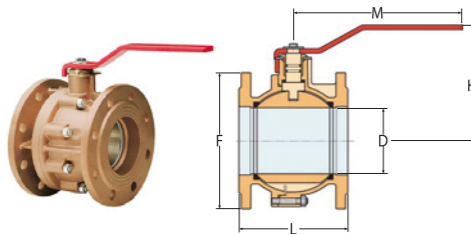
Code	Weight (gr)	M	H	L	D	A	G
MM GDI 1925	195	110	48	52	10	10	1/4"
	215	110	48	52	10	11.4	3/8"
	360	110	50	66	13	15	1/2"
	625	130	63	76	17.5	16.3	3/4"
	1100	130	67	93	22	19.1	1"
	1900	159	82	108	28	21.4	1 1/4"
	3200	159	89	126	35	21.4	1 1/2"
5300	188	109	146	44	25.7	2"	

THREAD :
G = ISO 7/1 (BS 21)

FLANGED BALL VALVE PN16 - BRONZE



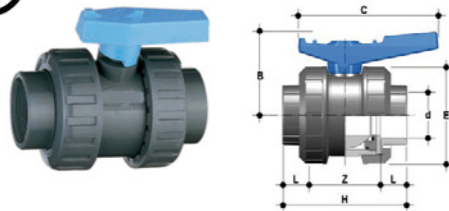
MODEL :
DN 20 ÷ DN40



MODEL :
DN50 ÷ DN200

Code	Weight (gr)	F	M	H	L	D	DN	
MM GDI 2100 (Spindle and inside ball in brass OT60)	2500	105	130	85	120	20	20	
	3200	115	170	95	125	25	25	
	4400	140	170	100	130	32	32	
	5500	150	220	118	140	40	40	
	6500	165	220	125	150	50	50	
	MM GDI 2102 (Spindle and inside ball in stainless steel AISI 316)	11500	185	284	152	170	63	65
		15500	200	284	166	180	76	80
		20000	220	360	180	190	95	100
		30000	250	447	225	200	120	125
		36000	285	50	242	210	145	150
93000	340	1000	320	400	190	200		

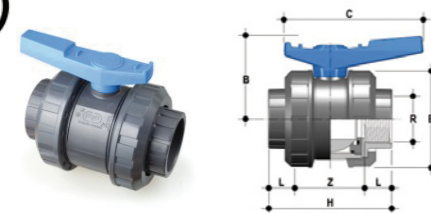
PVC 2-WAY BALL VALVE - RADIAL - METRIC SERIES - PLAIN FEMALE ENDS FOR GLUING



Code	d	DN	PN	H mm
MM FIP VEIV075	75	65	10	216
MM FIP VEIV090	90	80	10	244
MM FIP VEIV110	110	100	6	309
MM FIP VEIV125	125	100	6	325

Other sizes available on request

PVC 2-WAY BALL VALVE - RADIAL - BS PARALLEL THREADED FEMALE ENDS



Code	d	DN	PN	H mm
MM FIP VEFV212	2 1/2"	65	10	216
MM FIP VEFV300	3"	80	10	242
MM FIP VEIV400	4"	100	6	309

Other sizes available on request

MANSUETO MARINE

FORGED STEEL FLANGES - CLASS 150

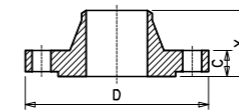


Fig. 1
Welding neck

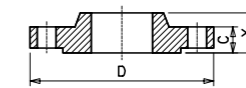


Fig. 2
Slip-on Welding

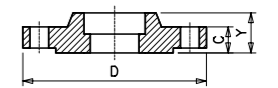


Fig. 3
Socket Welding (1/2"-3")

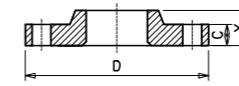


Fig. 4
Lapped

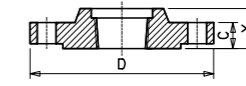


Fig. 5
Screwed

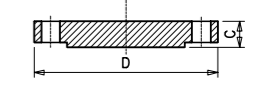


Fig. 6
Blind

DN (inch)	Dimensions and Weights										
	Outside diameter D (mm)	Thickness C (mm)	Height "Y"			Drilling			Indicative weights		
			Fig. 1 (mm)	Fig. 2-3-5 (mm)	Fig. 4 (mm)	Holes N	Diameter (mm)	Bolt circle (mm)	Fig. 1-4 (mm)	Fig. 2-3-5 (mm)	Fig. 6 (mm)
1/2"	89	12	48	16	16	4	16	61	0,8	0,8	0,8
3/4"	99	13	53	16	16	4	16	70	1,0	0,9	0,9
1"	108	15	56	18	18	4	16	80	1,1	1,0	1,0
1 1/4"	118	16	57	21	21	4	16	89	1,4	1,3	1,3
1 1/2"	127	18	62	23	23	4	16	99	1,8	1,4	1,4
2"	152	19	64	26	26	4	19	121	2,7	2,3	1,8
2 1/2"	178	23	70	29	29	4	19	140	3,6	3,2	3,2
3"	190	24	70	30	30	4	19	153	4,5	3,6	4,1
4"	229	24	76	34	34	8	19	191	6,8	5,9	7,7
5"	254	24	89	37	37	8	22	216	8,6	6,8	9,1
6"	280	26	89	40	40	8	22	242	10,9	8,6	11,8
8"	343	29	102	45	45	8	22	299	17,7	13,6	20,4
10"	406	31	102	50	50	12	26	362	23,6	19,5	31,8
12"	483	32	114	56	56	12	26	432	36,3	29,1	50,0
14"	533	35	127	58	80	12	29	477	46,3	38,6	60,0
16"	597	37	127	64	88	16	29	540	57,7	42,2	77,0
18"	635	40	140	69	97	16	32	578	63,6	54,5	95,0
20"	700	43	144	73	103	20	32	635	77,2	70,0	123,0
24"	813	48	152	83	111	20	35	750	118,0	95,0	187,0

FLANGED MIVAL PRODUCTS



Flanged Ball Valve PN16



Ball Check Valve PN10



3-Way Plug Cock with Gland PN10

Mival gate valves, joints, bleed valves, gauges, balancing valves also available.

www.mansuetomarine.it

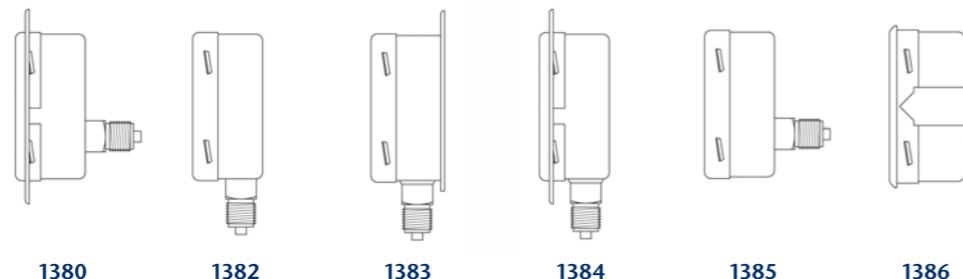
GAUGES

ECONOSTO®

PRESSURE GAUGES



Stainless Steel Case
Liquid Filled (Glycerine)
IP65



1380 1382 1383 1384 1385 1386

PRESSURE GAUGES Dial Range
0 to 0.6 bar
0 to 1 bar
0 to 1.6 bar
0 to 2.5 bar
0 to 4 bar
0 to 6 bar
0 to 10 bar
0 to 16 bar
0 to 25 bar
0 to 40 bar
0 to 60 bar
0 to 100 bar
0 to 160 bar
0 to 250 bar

VACUUM GAUGES Dial Range
-1 to 0 bar
-1200 to 0 bar

VACUUM/PRESSURE GAUGES Dial Range
-1 to 0.6
-1 to 1.5
-1 to 3
-1 to 5
-1 to 9
-1 to 15

Code	Case Diameter	Dial Range	Fitting	Connection	Connection Size
MM ECN 1380-63	63 mm	See above	Front Flange	Rear	BSP 1/4" Male Thread
MM ECN 1380-100	100 mm	See above	Front Flange	Rear	BSP 1/2" Male Thread
MM ECN 1382-63	63 mm	See above	Direct	Below	BSP 1/4" Male Thread
MM ECN 1382-100	100 mm	See above	Direct	Below	BSP 1/2" Male Thread
MM ECN 1383-63	63 mm	See above	Surface Mounting Bracket	Below	BSP 1/4" Male Thread
MM ECN 1383-100	100 mm	See above	Surface Mounting Bracket	Below	BSP 1/2" Male Thread
MM ECN 1384-63	63 mm	See above	Front Flange	Below	BSP 1/4" Male Thread
MM ECN 1384-100	100 mm	See above	Front Flange	Below	BSP 1/2" Male Thread
MM ECN 1385-63	63 mm	See above	Direct	Rear	BSP 1/4" Male Thread
MMECN1385-100	100 mm	See above	Direct	Rear	BSP 1/2" Male Thread
MMECN1386-63	63 mm	See above	Dashboard	Rear	BSP 1/4" Male Thread
MMECN1386-100	100 mm	See above	Dashboard	Rear	BSP 1/2" Male Thread

NOTE: 160 mm case diameter also available.

MANSUETO MARINE



PRESSURE GAUGES > ART. 30 - ALL STAINLESS STEEL > BOTTOM DIAL 40 - 50 - 63 MM



All stainless steel pressure gauge made according UNI EN 837.1 norms - case AISI 304 dial 40 - 50 - 63 mm. - Stainless steel AISI 316 movement and pivot - BOTTOM conical connection (UNI EN 10226) on dial 40 - BOTTOM cylindrical connection (ISO 228) on dial 50 and 63 - Aluminium dial White background Black - BAR scale and Red PSI (except compound gauge bar only) - Accuracy 2,5% on dial 40 and 50 - Accuracy 1,6% on dial 63 - Aluminium index

Code	VAR	A	B	D	D1	H	G	CH	Kg
MM BAR 30DN40BT	dn 40	7	25	41	45	34,5	1/8" BSPT	11	0,058
MM BAR 30DN50BT	dn 50	10	30	52	58	49	1/4" BSPP	14	0,095
MM BAR 30DN63BT	dn 63	10	31	62	66	54	1/4" BSPP	14	0,136



PRESSURE GAUGES > ART. 30 - ALL STAINLESS STEEL > BACK DIAL 40 - 50 - 63 MM



All stainless steel pressure gauge made according UNI EN 837.1 norms - case AISI 304 dial 40 - 50 - 63 mm. - Stainless steel AISI 316 movement and pivot - BACK conical connection (UNI EN 10226) on dial 40 - BACK cylindrical connection (ISO 228) on dial 50 and 63 - Aluminium dial White background Black - BAR scale and Red PSI (except compound gauge bar only) - Accuracy 2,5% on dial 40 and 50 - Accuracy 1,6% on dial 63 - Aluminium index

Code	VAR	B	D	D1	H	G	CH	Kg
MM BAR 30DN40BK	dn 40	25	40,5	45	39	1/8" BSPT	11	0,054
MM BAR 30DN50BK	dn 50	28	51	56	51	1/4" BSPP	14	0,095
MM BAR 30DN63BK	dn 63	29	62	68	56	1/4" BSPP	14	0,109



PRESSURE GAUGES > ART. MGE - STAINLESS STEEL CASE (GLYCERINE) > BOTTOM DIAL 40 - 50 - 63 MM



Pressure gauge made according UNI EN 837.1 norms - Stainless steel case AISI 304 dial 40 - 50 - 63 mm. - BRASS movement and pivot - BOTTOM conical connection (UNI EN 10226) on dial 40 - BOTTOM cylindrical connection (ISO 228) on dial 50 and 63 - Aluminium dial White background - Black BAR scale and Red PSI (except compound gauge) - Accuracy 2,5% on dial 40 and 50 - Accuracy 1,6% on dial 63 - Aluminium index

Code	VAR	A	B	D	D1	H	G	CH	Kg
MM BAR MGEDN40BT	dn 40	0,5	25	40,5	44	38	1/8" BSPT	11	0,110
MM BAR MGEDN50BT	dn 50	10	30	52	57	49	1/4" BSPP	14	0,145
MM BAR MGEDN63BT	dn 63	10	29	62	68	57	1/4" BSPP	14	0,207

Please inquire at info@mansuetomarine.it for different types of pressure gauges (flanged type, steel case, stainless steel solid front, low pressure, digital type and electric switch) and accessories (manifolds, syphones, gauge isolators and holders).

www.mansuetomarine.it

