



FUEL TANKS



HULK 10



Fuel tank with filter - Fuel.

Code	Sizes			
	H	L	LT	W
MM NVR 44790	185 mm 7,22"	330 mm 12,87"	10 l	260 mm 10,14"

RINA TYPE APPROVAL N.DIP.342507CS/001



HULK 12



Fuel tank with filter
- Fuel.

Code	Sizes			
	H	L	LT	W
MM NVR 44803	200 mm 7,8"	410 mm 15,99"	12 l	260 mm 10,14"

RINA TYPE APPROVAL N.DIP.342507CS/001



HULK 22



Fuel tank with filter
and fuel gauge - Fuel.

Code	Sizes			
	H	L	LT	W
MM NVR 44804	265 mm 10,34"	460 mm 17,94"	22 l	305 mm 11,9"

RINA TYPE APPROVAL N.DIP.342507CS/001



HULK 25



Fuel tank with
filter and fuel
gauge - Fuel / Diesel.

Code	Sizes			
	H	L	LT	W
MM NVR 44789	255 mm 9,95"	450 mm 17,55"	25 l	315 mm 12,29"

RINA TYPE APPROVAL N.DIP.342507CS/001



HULK 30

Fuel tank with filter and fuel gauge - Fuel.

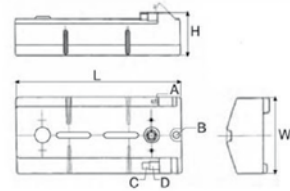


Code	Sizes			
	H	L	LT	W
MM NVR 44805	270 mm 10,53"	510 mm 19,89"	30 l	360 mm 14,04"
RINA TYPE APPROVAL N.DIP.342507CS/001				



MISTRAL 90

Fuel tanks - Lt 90 "V" shape - With float and connector.



Code	Sizes						
	H	L	W	Ø A	Ø B	Ø C	Ø D
MM NVR 195992	277 mm 10,8"	1100 mm 42,9"	500 mm 19,5"	16 mm 0,62"	38 mm 1,48"	38 mm 1,48"	50 mm 1,95"
RINA (0474) EC TYPE EXAMINATION CERTIFICATE N. DIP. 314708 CS							



MISTRAL 55

Fuel tanks - Lt 55 "V" shape - With float and connector.

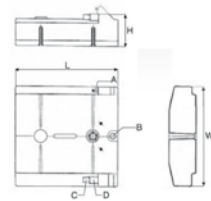


Code	Sizes						
	H	L	W	Ø A	Ø B	Ø C	Ø D
MM NVR 196251	245 mm 9,56"	900 mm 35,1"	400 mm 15,6"	16 mm 0,62"	38 mm 1,48"	38 mm 1,48"	50 mm 1,95"
RINA (0474) EC TYPE EXAMINATION CERTIFICATE N. DIP. 314708 CS							



GHIBLI 90

Fuel tanks - Lt 90 flat bottom - With float and connector.



Code	Sizes						
	H	L	W	Ø A	Ø B	Ø C	Ø D
MM NVR 195995	245 mm 9,56"	780 mm 30,42"	765 mm 29,84"	16 mm 0,62"	38 mm 1,48"	38 mm 1,48"	50 mm 1,95"
RINA (0474) EC TYPE EXAMINATION CERTIFICATE N. DIP. 450807CS001							



GHIBLI 200

Fuel tanks - Lt 200 flat bottom - With float and connector.



Code	Sizes						
	H	L	W	Ø A	Ø B	Ø C	Ø D
MM NVR 195996	370 mm 14,43"	1200 mm 46,8"	640 mm 24,96"	16 mm 0,62"	38 mm 1,48"	38 mm 1,48"	50 mm 1,95"
RINA (0474) EC TYPE EXAMINATION CERTIFICATE N. DIP. 314708 CS							



SOGLIOLA 45

Fuel tanks.



Code	Sizes			
	H	L	LT	W
MM NVR 44832	220 mm 8,58"	650 mm 25,35"	38 l	350 mm 13,65"
RINA(0474)EC TYPE EXAMINATION CERTIFICATE N.DIP. 64596/4				



SOGLIOLA 60

Fuel tanks - 45° deckfill Ø 38 mm.



Code	Sizes			
	H	L	LT	W
MM NVR 50215	220 mm 8,58"	850 mm 33,15"	49 l	350 mm 13,65"
RINA (0474) EC TYPE EXAMINATION CERTIFICATE N. DIP. 64596/4				



SOGLIOLA 80

Fuel tanks.



Code	Sizes			
	H	L	LT	W
MM NVR 44836	220 mm 8,58"	1100 mm 42,9"	73 l	350 mm 13,65"
RINA(0474)EC TYPE EXAMINATION CERTIFICATE N.DIP. 64596/4				



ERCOLE 40

Fuel tanks - Straight deckfill Ø 38 mm.



Code	Sizes			
	H	L	LT	W
MM NVR 50195	300 mm 11,7"	500 mm 19,5"	41 l	350 mm 13,65"
RINA (0474) EC TYPE EXAMINATION CERTIFICATE N.DIP.64596/3				



ERCOLE 55

Fuel tanks - Straight deckfill Ø 38 mm.



Code	Sizes			
	H	L	LT	W
MM NVR 50199	300 mm 11,7"	650 mm 25,35"	55 l	350 mm 13,65"
RINA (0474) EC TYPE EXAMINATION CERTIFICATE N.DIP.64596/3				

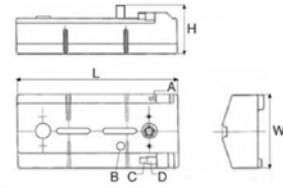


ERCOLE 65

Fuel tanks - Straight deckfill Ø 38 mm.

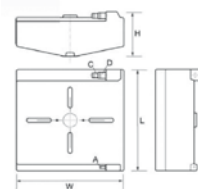


Code	Sizes			
	H	L	LT	W
MM NVR 50205	300 mm 11,7"	800 mm 31,2"	69 l	350 mm 13,65"
RINA (0474) EC TYPE EXAMINATION CERTIFICATE N.DIP.64596/3				

**MISTRAL 130**

Code	Sizes						
	H	L	W	Ø A	Ø B	Ø C	Ø D
MM NVR 195993	370 mm 14,43"	1400 mm 54,6"	420 mm 16,38"	16 mm 0,62"	38 mm 1,48"	38 mm 1,48"	50 mm 1,95"
RINA (0474) EC TYPE EXAMINATION CERTIFICATE N. DIP. 314708 CS							

Fuel tanks - Lt 130 "V" shape -
With float and connector.

**MISTRAL 145**

Code	Sizes					
	H	L	W	Ø A	Ø C	Ø D
MM NVR 196045	375 mm 14,63"	680 mm 26,52"	895 mm 34,91"	16 mm 0,62"	38 mm 1,48"	50 mm 1,95"
RINA (0474) EC TYPE EXAMINATION CERTIFICATE N. DIP. 314708 CS						

Fuel tanks - Lt 145 "V" shape -
With float and connector.

**MISTRAL 188**

Code	Sizes					
	H	L	W	Ø A	Ø C	Ø D
MM NVR 196044	375 mm 14,63"	847 mm 33,03"	900 mm 35,1"	16 mm 0,62"	38 mm 1,48"	50 mm 1,95"
RINA (0474) EC TYPE EXAMINATION CERTIFICATE N. DIP. 314708 CS						

Fuel tanks - Lt 188 "V" shape -
With float and connector.

**MISTRAL 200**

Code	Sizes						
	H	L	W	Ø A	Ø B	Ø C	Ø D
MM NVR 195994	290 mm 11,31"	1500 mm 58,5"	700 mm 27,3"	16 mm 0,62"	38 mm 1,48"	38 mm 1,48"	50 mm 1,95"
RINA (0474) EC TYPE EXAMINATION CERTIFICATE N. DIP. 314708 CS							

Fuel tanks - Lt 200 "V" shape -
With float and connector.

**MISTRAL 233**

Code	Sizes					
	H	L	W	Ø A	Ø C	Ø D
MM NVR 196046	320 mm 12,48"	1250 mm 48,75"	990 mm 38,61"	16 mm 0,62"	38 mm 1,48"	50 mm 1,95"
RINA (0474) EC TYPE EXAMINATION CERTIFICATE N. DIP. 314708 CS						

Fuel tanks - Lt 233 "V" shape -
With float and connector.

MANSUETO MARINE

**WATER TANKS****ERCOLE 45**

Water tanks
Pipe Ø 16.
Straight deckfill*
Ø 38 mm.



Code	Sizes			
	H	L	LT	W
MM NVR 50193	300 mm 11,7"	500 mm 19,5"	45 l	350 mm 13,65"

**ERCOLE 56**

Water tanks
Pipe Ø 16.
Straight
deckfill*
Ø 38 mm.



Code	Sizes			
	H	L	LT	W
MM NVR 50197	300 mm 11,7"	650 mm 25,35"	56 l	350 mm 13,65"

**ERCOLE 70**

Water tanks
Pipe Ø 16.
Straight
deckfill*
Ø 38 mm.



Code	Sizes			
	H	L	LT	W
MM NVR 50204	300 mm 11,7"	800 mm 31,2"	70 l	350 mm 13,65"

**SOGLIOLA 50**

Water tanks
Pipe Ø 16.
Straight deckfill*
Ø 38 mm.



Code	Sizes			
	H	L	LT	W
MM NVR 50207	220 mm 8,58"	650 mm 25,35"	45 l	350 mm 13,65"

**SOGLIOLA 65**

Water tanks
Pipe Ø 16.
Straight deckfill*
Ø 38 mm.



Code	Sizes			
	H	L	LT	W
MM NVR 50212	220 mm 8,58"	850 mm 33,15"	60 l	350 mm 13,65"

www.mansuetomarine.it



SOGLIOLA 85

Water tanks
Pipe Ø 16.
Straight deckfill*
Ø 38 mm.



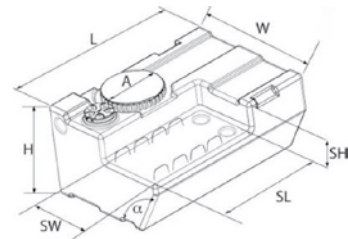
Code	Sizes			
	H	L	LT	W
MM NVR 50216	220 mm 8,58"	1100 mm 42,9"	80 l	350 mm 13,65"

*All models available also with 45° deckfill Ø 38 mm.

WASTE WATER TANKS



BLIZZARD 40

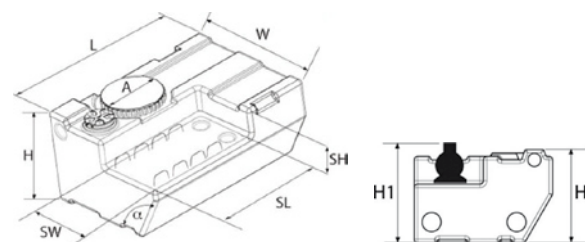


Blizzard 40 - Waste water tank - only tank

Code	Sizes								
	α	H	L	LT	SH	SL	SW	W	Ø A
MM NVR 196867	120°	270 mm 10,53"	545 mm 21,26"	40 l	80 mm 3,12"	350 mm 13,65"	200 mm 7,8"	400 mm 15,6"	133,5 mm 5,19"



BLIZZARD 40 - 12 V / 24 V

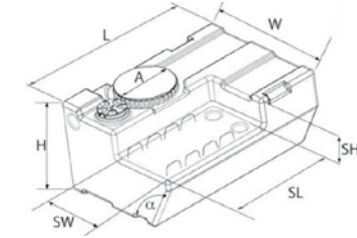


Blizzard 40 - Waste water tank - w/membrane pump 12V or 24 V, sender and connector kit

Code	Volts	Sizes									
		α	H	H1	L	LT	SH	SL	SW	W	Ø A
MM NVR 196871	12V	120°	270 mm 10,53"	320 mm 12,48"	545 mm 21,26"	40 l	80 mm 3,12"	350 mm 13,65"	200 mm 7,8"	400 mm 15,6"	133,5 mm 5,19"
MM NVR 196875	24V	120°	270 mm 10,53"	320 mm 12,48"	545 mm 21,26"	40 l	80 mm 3,12"	350 mm 13,65"	200 mm 7,8"	400 mm 15,6"	133,5 mm 5,19"



BLIZZARD 60

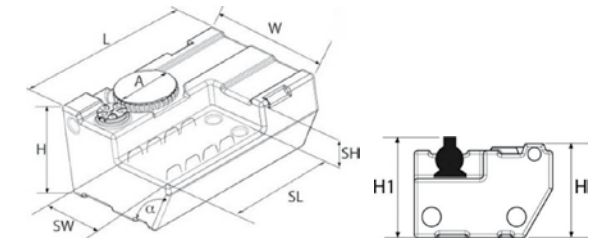


Blizzard 60 - Waste water tank - only tank

Code	Sizes								
	α	H	L	LT	SH	SL	SW	W	Ø A
MM NVR 196868	120°	270 mm 10,53"	775 mm 30,23"	60 l	80 mm 3,12"	350 mm 13,65"	200 mm 7,8"	400 mm 15,6"	133,5 mm 5,19"



BLIZZARD 60 - 12 V / 24 V

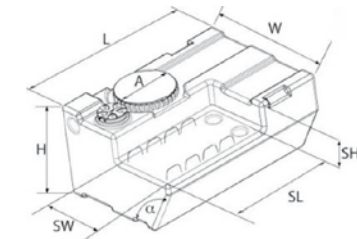


Blizzard 60 - Waste water tank - w/membrane pump 12 V or 24 V, sender and connector kit

Code	Volts	Sizes									
		α	H	H1	L	LT	SH	SL	SW	W	Ø A
MM NVR 196872	12V	120°	270 mm 10,53"	320 mm 12,48"	775 mm 30,23"	60 l	80 mm 3,12"	350 mm 13,65"	200 mm 7,8"	400 mm 15,6"	133,5 mm 5,19"
MM NVR 196876	24V	120°	270 mm 10,53"	320 mm 12,48"	775 mm 30,23"	60 l	80 mm 3,12"	350 mm 13,65"	200 mm 7,8"	400 mm 15,6"	133,5 mm 5,19"



BLIZZARD 80

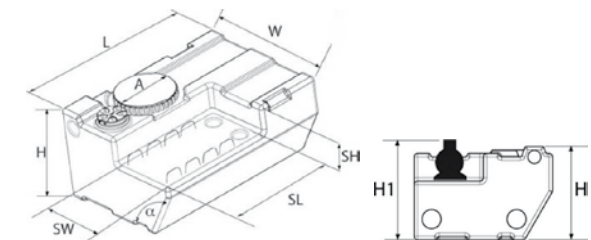


Blizzard 80 - Waste water tank - only tank

Code	Sizes								
	α	H	L	LT	SH	SL	SW	W	Ø A
MM NVR 196869	120°	270 mm 10,53"	775 mm 30,23"	80 l	80 mm 3,12"	350 mm 13,65"	200 mm 7,8"	400 mm 15,6"	133,5 mm 5,19"



BLIZZARD 80 - 12 V / 24 V



Blizzard 80 - Waste water tank - w/membrane pump 12 V or 24 V, sender and connector kit

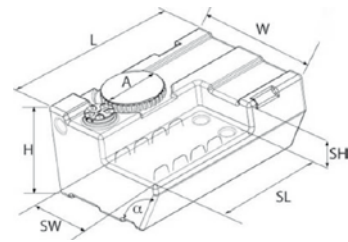
Code	Volts	Sizes									
		α	H	H1	L	LT	SH	SL	SW	W	Ø A
MM NVR 196873	12V	120°	270 mm 10,53"	320 mm 12,48"	1005 mm 39,2"	80 l	80 mm 3,12"	350 mm 13,65"	200 mm 7,8"	400 mm 15,6"	133,5 mm 5,19"
MM NVR 196877	24V	120°	270 mm 10,53"	320 mm 12,48"	1005 mm 39,2"	80 l	80 mm 3,12"	350 mm 13,65"	200 mm 7,8"	400 mm 15,6"	133,5 mm 5,19"



BLIZZARD 100



Blizzard 100 - Waste water tank - only tank



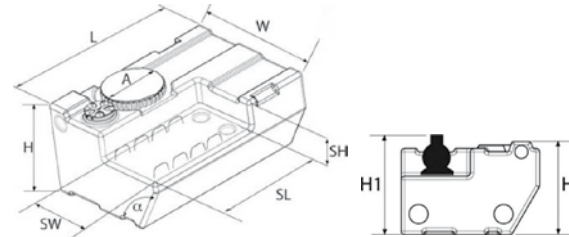
Code	Sizes								
	α	H	L	LT	SH	SL	SW	W	Ø A
MM NVR 196870	120°	270 mm 10,53"	1245 mm 48,56"	100 l	80 mm 3,12"	350 mm 13,65"	200 mm 7,8"	400 mm 15,6"	133,5 mm 5,19"



BLIZZARD 100 - 12 V / 24 V



Blizzard 100 - Waste water tank - w/membrane pump 12 V or 24 V, sender and connector kit

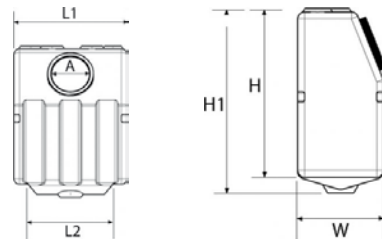


Code	Volts	Sizes									
		α	H	H1	L	LT	SH	SL	SW	W	Ø A
MM NVR 196874	12V	120°	270 mm 10,53"	320 mm 12,48"	1245 mm 48,56"	100 l	80 mm 3,12"	350 mm 13,65"	200 mm 7,8"	400 mm 15,6"	133,5 mm 5,19"
MM NVR 196878	24V	120°	270 mm 10,53"	320 mm 12,48"	1245 mm 48,56"	100 l	80 mm 3,12"	350 mm 13,65"	200 mm 7,8"	400 mm 15,6"	133,5 mm 5,19"

ZEFIRO 40



Zefiro 40 - vertical waste water tank

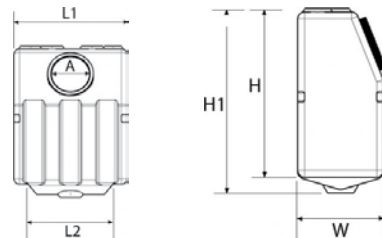


Code	Sizes						
	H	H1	L1	L2	LT	W	Ø A
MM NVR 196881	493,7 mm 19,23"	540 mm 21,06"	400 mm 15,6"	302 mm 11,78"	40 l	250 mm 9,75"	133,5 mm 5,19"

ZEFIRO 60



Zefiro 60 - vertical waste water tank



Code	Sizes						
	H	H1	L1	L2	LT	W	Ø A
MM NVR 196882	703,7 mm 27,42"	750,3 mm 29,25"	400 mm 15,6"	302 mm 11,78"	60 l	250 mm 9,75"	133,5 mm 5,19"

MANSUETO MARINE



ICEGLOO



MARINE XTREME 70



Features:

- UV Resistant
- AISI SS 316 Handles with soft touch material
- Draining system

Code	Capacity	Insulation	Dimensions			Weight
			Length	Height	Depth	
MM COE 270A799	66 LT	PU Foam	80 cm	47 cm	40,6 cm	7,3 kg



MARINE XTREME 82



Features:

- UV Resistant
- Drink holder top
- Removable panel and tray
- AISI SS 316 Handles with soft touch material
- Draining system

Code	Capacity	Insulation	Dimensions			Weight
			Length	Height	Depth	
MM COE 6296A799	77 LT	PU Foam	93 cm	45 cm	43 cm	10 kg



MARINE XTREME 100



Features:

- UV Resistant
- AISI SS 316 Handles with soft touch material
- Draining system

Code	Capacity	Insulation	Dimensions			Weight
			Length	Height	Depth	
MM COE 6200A799	95 LT	PU Foam	92,7 cm	44,8 cm	43,8 cm	8,9 kg



MARINE XTREME 200



Features:

- UV Resistant
- Removable panel and tray
- AISI SS 316 Handles with soft touch material
- Draining system

Code	Capacity	Insulation	Dimensions			Weight
			Length	Height	Depth	
MM COE 203755	189 LT	PU Foam Optimaxx 4 layers - HDPE/PP	93 cm	45 cm	43 cm	21,1 kg

www.mansuetomarine.it



MARINE ULTRA 25

Features:

- Ultratherm® insulated cooler body
- UV inhibitors guard against sun damage
- Marine-grade extended life hinges
- Vinyl coated stainless steel lid strap
- Reinforced non-slip, comfort grip swing up handles with tie-down feature
- Stain- and odor-resistant liner
- Stainless steel corrosion resistant screws



Code	Capacity	Dimensions			Weight
		Length	Width	Height	
MM IGL 44682	25 Quarts (23 Liters)	50.952 cm	28.575 cm	33.35 cm	2.4 Kg



MARINE BREEZE 28 ROLLER

Features:

- Cool Riser Technology™
- Push-Button & Locking Telescoping Handle
- Non-Marking Translucent Sport Wheels
- UV Inhibitors to Guard Against Sun Damage
- Molded-in Side Cooler Handles



Code	Capacity	Dimensions			Weight
		Length	Width	Height	
MM IGL 45107	28 Quarts (26 Liters)	46.673 cm	33.812 cm	41.148 cm	3.93 Kg



MARINE ULTRA 48

Features:

- Ultratherm® insulated cooler body and lid
- UV inhibitors guard against sun damage
- Marine-grade extended life hinges
- Vinyl coated stainless steel lid strap
- Reinforced non-slip, comfort grip swing up handles with tie-down feature
- Integrated fish keeper measuring tool on lid
- Stain- and odor-resistant liner
- Recessed, triple-snap drain plug
- Stainless steel corrosion resistant screws



Code	Capacity	Dimensions			Weight
		Length	Width	Height	
MM IGL 44682	48 Quarts (45 Liters)	65.405 cm	37.16 cm	36.83 cm	3.99 Kg



MARINE ULTRA 54

Features:

- Ultratherm® insulated cooler body and lid provide MaxCold® 4-day performance*
- UV inhibitors guard against sun damage
- Marine-grade extended life hinges
- Plastic lid latch with rust-resistant stainless steel piano-style hinge area
- Vinyl coated stainless steel lid strap
- Reinforced non-slip, comfort grip swing up handles with tie-down feature
- Integrated fish keeper measuring tool on lid
- Stain- and odor-resistant liner
- Recessed, triple-snap drain plug
- Stainless steel corrosion resistant screws



Code	Capacity	Dimensions			Weight
		Length	Width	Height	
MM IGL 44684	54 Quarts (51 Liters)	64.77 cm	39.37 cm	39.37 cm	3.67 Kg



MARINE ULTRA 72

Features:

- Ultratherm® insulated cooler body and lid provide MaxCold® 5-day performance*
- UV inhibitors guard against sun damage
- Marine-grade extended life hinges
- Plastic lid latch with rust-resistant stainless steel piano-style hinge area
- Vinyl coated stainless steel lid strap
- Reinforced non-slip, comfort grip swing up handles with tie-down feature
- Integrated fish keeper measuring tool on lid
- Stain- and odor-resistant liner
- Threaded drain plug for hose hook up
- Stainless steel corrosion resistant screws
- Snaps for attaching optional seat cushion



Code	Capacity	Dimensions			Weight
		Length	Width	Height	
MM IGL 44686	72 Quarts (68 Liters)	74.93 cm	41.91 cm	40.97 cm	5.26 Kg



60 QUART ICE CUBE MARINE ULTRA ROLLER™

Features:

- Includes two detachable fishing rod holders that attach to cooler to hold and transport your fishing rods
- Wheels and locking telescoping handle can be pulled or pushed
- Four drink holders in all - two molded into lid, and two hook onto corners and then snap snugly back into lid when not being used
- Deep storage compartment in lid for non-perishable and personal items
- Recessed, drip resistant drain plug
- Molded-in side cooler handles for lifting in/out of vehicle
- UV inhibitors guard against sun damage



Code	Capacity	Dimensions			Weight
		Length	Width	Height	
MM IGL 45337	60 Quarts (57 Liters)	50.8 cm	46.99 cm	52.55 cm	6.26 Kg



250 QUART GREAT WHITE™

Features:

- Heavy-duty, impact resistant plastic
- Nearly 3" of insulation throughout body affords longest ice retention!
- Ultraviolet inhibitors provide protection from sun damage
- Lid gasket provides a great seal and aids thermal retention
- Two heavy duty rubberized latches
- Sturdy molded side cooler handles for transport and securing cooler to boat deck
- Dual, oversized drain plugs - one of each side - for fast draining
- Self-stopping integrated lid hinge
- Fish measuring ruler molded into lid
- Wear pads protect bottom of ice chest from wear and tear
- Stainless steel hardware throughout
- 15 day cooling



Code	Capacity	Dimensions			Weight
		Length	Width	Height	
MM IGL 44465	250 Quarts (236 Liters)	146.96 cm	64.74 cm	66.34 cm	41.73 Kg

STORAGE & PACKAGING

MANSUETO BOXES



Code	Description	Dimensions
MM MANSU BOXS	Personalized Cardboard Box S	390 x 290 x 160 mm
MM MANSU BOXM	Personalized Cardboard Box M	400 x 400 x 320 mm
MM MANSU BOXL	Personalized Cardboard Box L	600 x 400 x 320 mm

MANSUETO TAPE



Code	Description
MM MANSU TAPE	Personalized Mansueto Tape 50 mm

COLLAPSIBLE BOXES



Code	Description	Dimensions
MM MANSU BOXCOL	Collapsible Box Plastic	open 600 x 400 x 255 mm collapsed 600 x 400 x 70 mm

+39 335 5785225

+39 339 6709546

+39 0184 573346 press #3

MANSUETO MARINE



STORE CONTAINERS WITH LID



Available colours

(BI) White
(TRAS) Transparent
(TV) Transparent Green
(TBL) Transparent Blue

Code	Sizes	Capacity
MM GGP 1900M352520	35x25x20h cm	15 Lt
MM GGP 1900M403022	40x30x22h cm	20 Lt
MM GGP 1900M453525	45x35x25h cm	30 Lt
MM GGP 1900M504026	50x40x26h cm	40 Lt
MM GGP 1900M554029	55x40x29h cm	50 Lt
MM GGP 1900M624031	62x40x31h cm	60 Lt
MM GGP 1900M754440	75x44x40h cm	100 Lt



DRY BAGS



The Dry Bag is an ideal product for all water sports and boating needs.

Dry bags are remarkably strong and leakproof. A three-roll watertight closure system keeps everything inside, clean and dry. Available in two colours, red & clear. The see-through version helps the user to locate the items he requires.

Code	Dimensions mm	Capacity Lt	Colour
MM LZS 10001	400x250	5	Clear
MM LZS 10002	600x300	12	Clear
MM LZS 10003	700x350	18	Clear
MM LZS 10004	800x500	55	Clear
MM LZS 10011	400x250	5	Red
MM LZS 10012	600x300	12	Red
MM LZS 10013	700x350	18	Red
MM LZS 10014	800x500	55	Red



DRY BAGS ATLANTIC



The dry bags Atlantic are strong, waterproof and leakproof, ideal for heavy-duty use. Their reinforced manufacturing allows you to pack heavy objects, while the clear PVC allows you to always see what you need without having to empty all the contents. The contents of the bag are sealed in, in the same way as the regular dry bags. The Atlantic Dry Bags are available in four sizes and one colour combination, clear with blue bottom.

Code	Dimensions mm	Capacity Lt	Colour
MM LZS 10430	400x250	5	Clear
MM LZS 10431	600x300	12	Clear
MM LZS 10432	700x350	18	Clear
MM LZS 10433	800x500	55	Clear

www.mansuetomarine.it

